



ST 05

Kettenzug "stationär"

"Stationary" chain hoist

Palan à chaîne "fixe accroché"

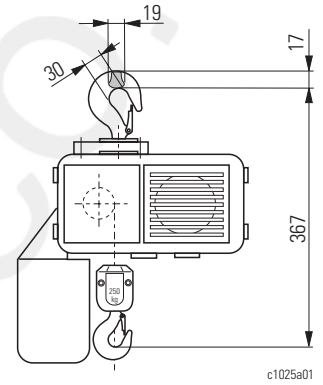
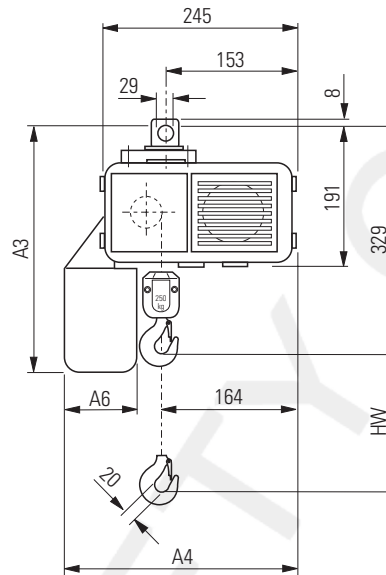
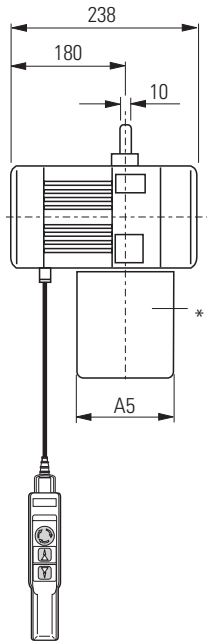
1/1

HW [m]	A3	A4	A5	A6	K	S	Option
	[mm]						
7	347	281	145	90	K	S	Standard
15	447	303	145	100	S	S	
24	496	303	145	100	S	S	
7	376	303	145	100	S	S	Option

Auswahltable: ↑ 14

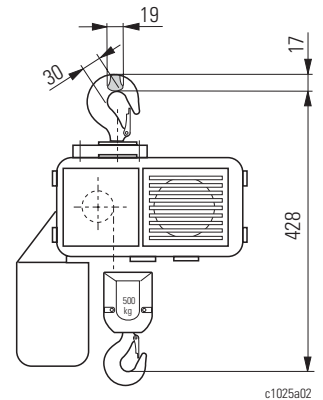
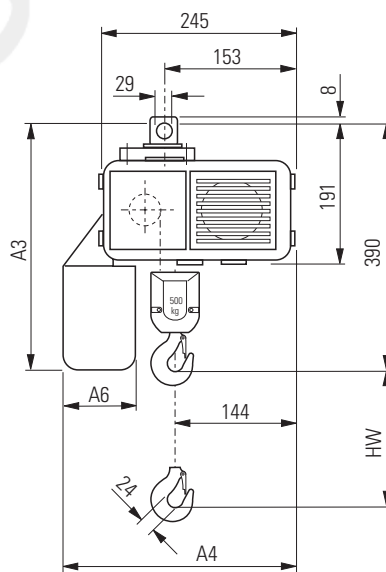
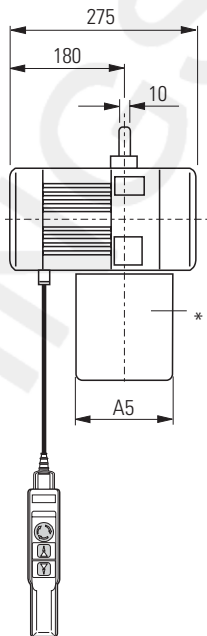
Selection table: ↑ 14

Tableau de sélection : ↑ 14



2/1

HW [m]	A3	A4	A5	A6	K	S	Option
	[mm]						
3,5	347	281	145	90	K	S	Standard
7,5	447	303	145	100	S	S	
12	496	303	145	100	S	S	
3,5	376	303	145	100	S	S	Option



* Material des Kettenspeichers
K = Kunststoff
S = Stahlblech
T = Textil

* Material of chain box
K = Plastic
S = Sheet metal
T = Fabric

* Matériau du bac à chaîne
K = Matière plastique
S = Tôle d'acier
T = Textile



ST 10

Kettenzug "stationär"

"Stationary" chain hoist

Palan à chaîne "fixe accroché"

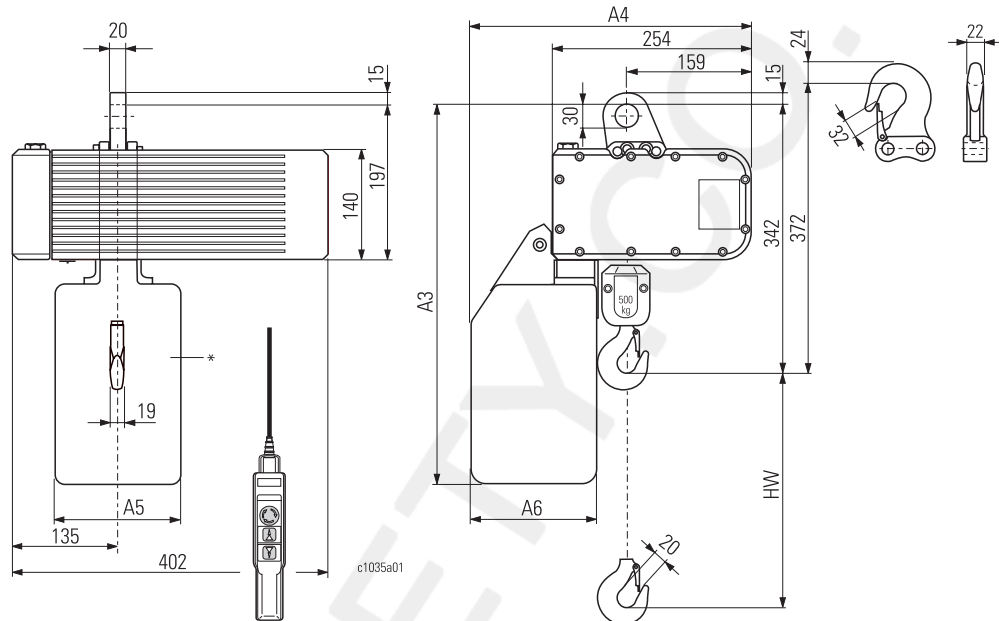
1/1

=1/1	HW				K	T	*
	A3	A4	A5	A6			
	[m]				Standard		
	[mm]				Option		
12	484	352	160	160	S	T	Standard
25	571	347	150	155	T	T	
30	651	347	150	155	T	T	
50	661	347	320	155	S	T	
60	701	347	320	155	S	S	
12	471	347	150	155	S	S	Option
25	571	347	150	155	S	S	
30	651	347	150	155	S	S	

Auswahltabelle: ↑ 14

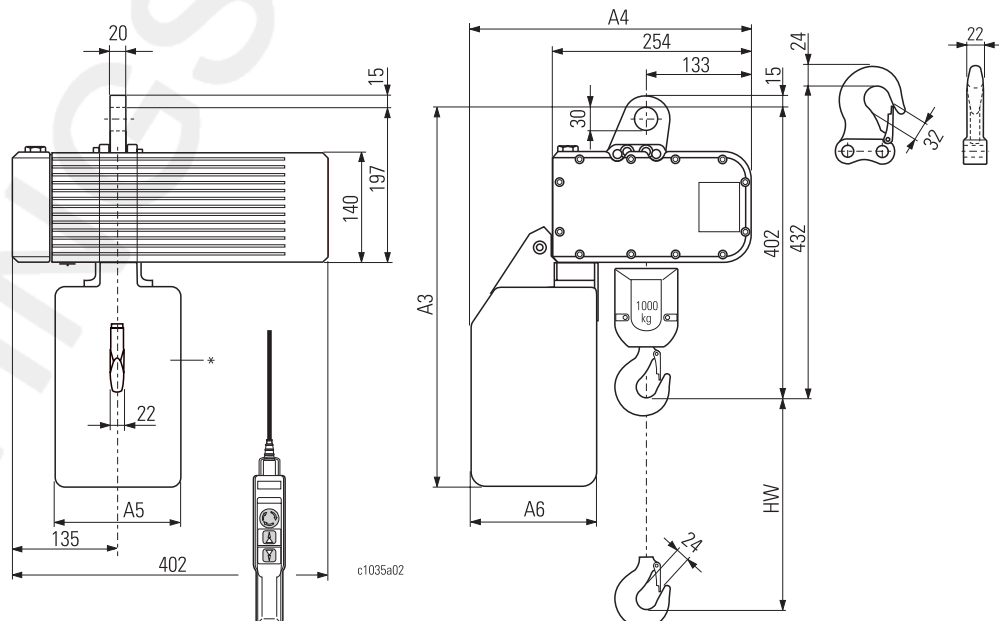
Selection table: ↑ 14

Tableau de sélection : ↑ 14



2/1

=2/1	HW				K	T	*
	A3	A4	A5	A6			
	[m]				Standard		
	[mm]				Option		
6	484	352	160	160	S	T	Standard
12,5	571	347	150	155	T	T	
15	651	347	150	155	T	T	
25	661	347	320	155	S	T	
30	701	347	320	155	S	S	
6	471	347	150	155	S	S	Option
12,5	571	347	150	155	S	S	
15	651	347	150	155	S	S	



* Material des Kettenspeichers
 K = Kunststoff
 S = Stahlblech
 T = Textil

* Material of chain box
 K = Plastic
 S = Sheet metal
 T = Fabric

* Matériau du bac à chaîne
 K = Matière plastique
 S = Tôle d'acier
 T = Textile



ST 20

Kettenzug "stationär"

"Stationary" chain hoist

Palan à chaîne "fixe accroché"

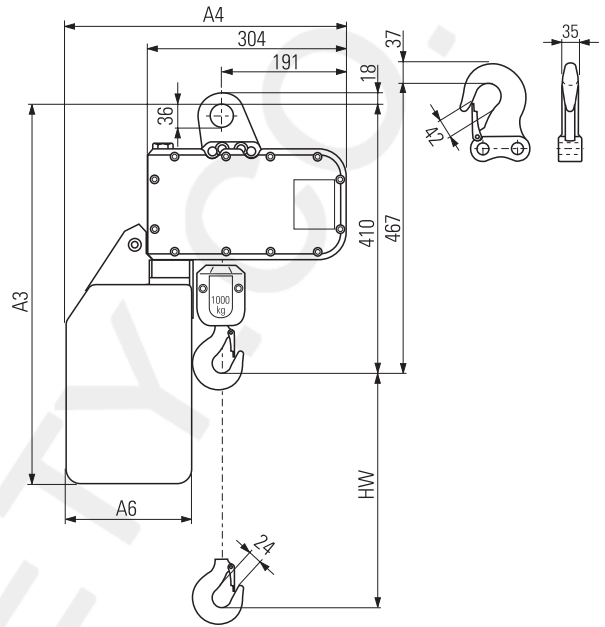
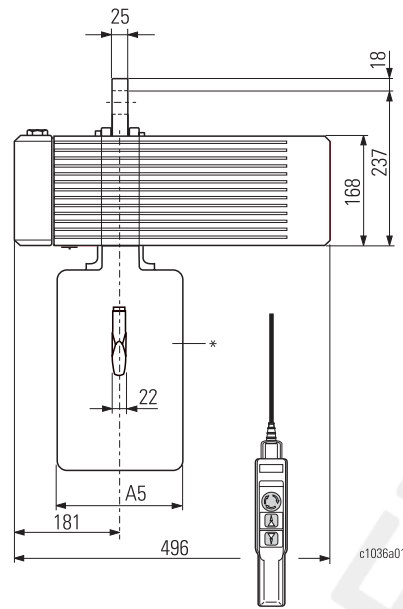
1/1

HW	A3	A4	A5	A6	K	T	*
	[mm]						
8	532	398	160	160	K	T	Standard
16	619	393	150	155	T	T	
22	699	393	150	155	T	T	
30	709	393	320	155	T	T	
40	749	393	320	155	S	S	
8	519	393	150	155	S	S	Option
16	619	393	150	155	S	S	
22	699	393	150	155	S	S	

Auswahltabelle: ↑ 14

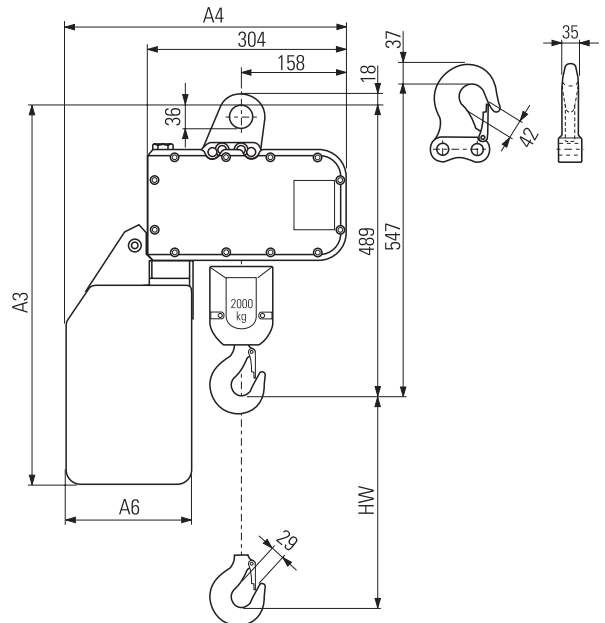
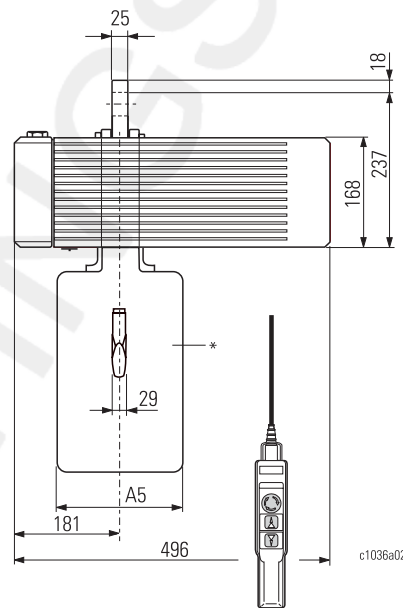
Selection table: ↑ 14

Tableau de sélection : ↑ 14



2/1

HW	A3	A4	A5	A6	K	T	*
	[mm]						
4	532	398	160	160	K	T	Standard
8	619	393	150	155	T	T	
11	699	393	150	155	T	T	
15	709	393	320	155	T	T	
20	749	393	320	155	S	S	
4	519	393	150	155	S	S	Option
8	619	393	150	155	S	S	
11	699	393	150	155	S	S	



* Material des Kettenspeichers
K = Kunststoff
S = Stahlblech
T = Textil

* Material of chain box
K = Plastic
S = Sheet metal
T = Fabric

* Matériau du bac à chaîne
K = Matière plastique
S = Tôle d'acier
T = Textile



ST 30

Kettenzug "stationär"

"Stationary" chain hoist

Palan à chaîne "fixe accroché"

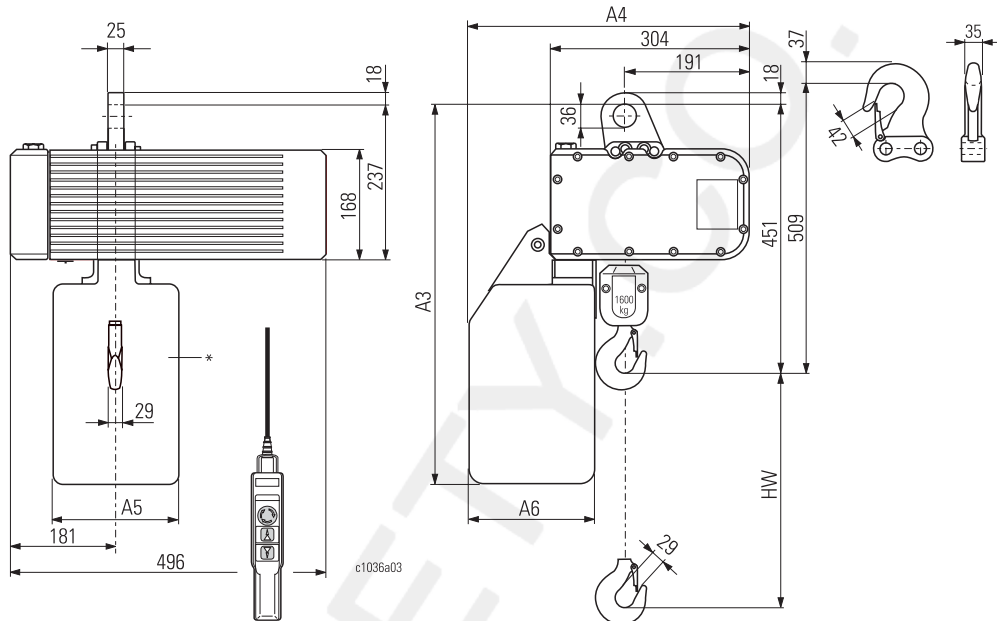
1/1

HW [m]	A3 A4 A5 A6 [mm]				K T S	* Standard
	A3	A4	A5	A6		
4,5	532	398	160	160	K	Standard
10	619	393	150	155	T	
12	699	393	150	155	T	
20	709	393	320	155	T	
30	749	393	320	155	S	
6	519	393	150	155	S	Option
10	619	393	150	155	S	
12	699	393	150	155	S	

Auswahltabelle: ↑ 14

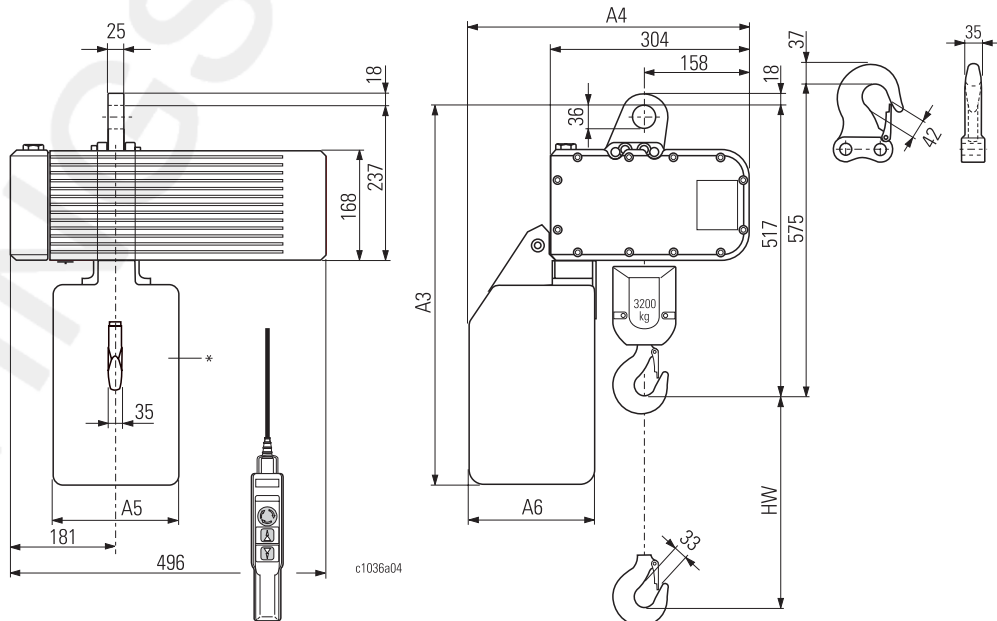
Selection table: ↑ 14

Tableau de sélection : ↑ 14



2/1

HW [m]	A3 A4 A5 A6 [mm]				K T S	* Standard
	A3	A4	A5	A6		
2,2	532	398	160	160	K	Standard
5	619	393	150	155	T	
6	699	393	150	155	T	
10	709	393	320	155	T	
15	749	393	320	155	S	
3	519	393	150	155	S	Option
5	619	393	150	155	S	
6	699	393	150	155	S	



* Material des Kettenspeichers
 K = Kunststoff
 S = Stahlblech
 T = Textil

* Material of chain box
 K = Plastic
 S = Sheet metal
 T = Fabric

* Matériau du bac à chaîne
 K = Matière plastique
 S = Tôle d'acier
 T = Textile



ST 32

Kettzug "stationär"

"Stationary" chain hoist

Palan à chaîne "fixe accroché"

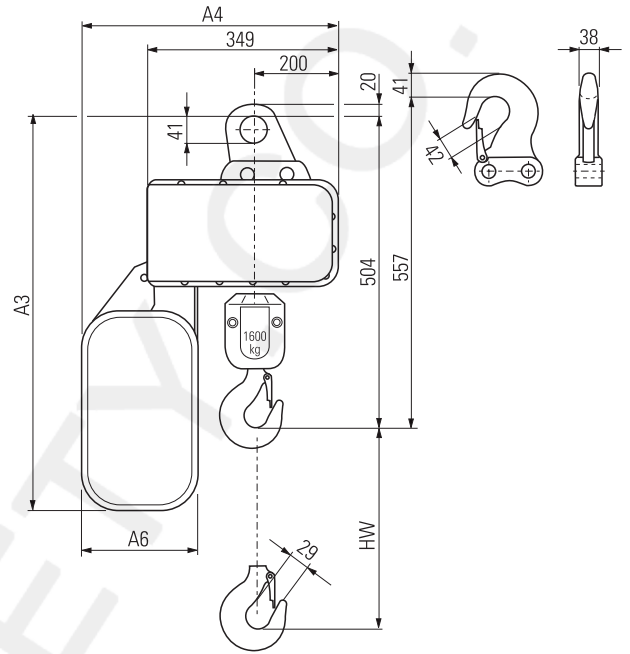
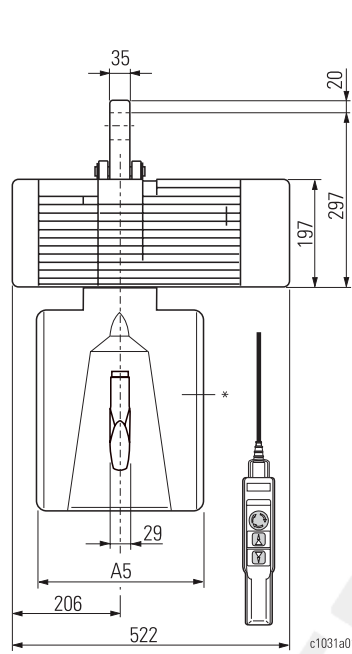
1/1

HW	A3	A4	A5	A6	K	S	T	Option
	[mm]							
4,5	586	424	160	160	K	S	S	Standard
20	711	466	300	210	K	S	S	Standard
50	892	636	300	380	S	S	S	Standard
80	1092	706	300	450	S	S	S	Standard
12	610	466	296	210	T	S	S	Option
20	730	466	296	210	T	S	S	Option
20	730	466	300	209	S	S	S	Option

Auswahltabelle: ↑ 14

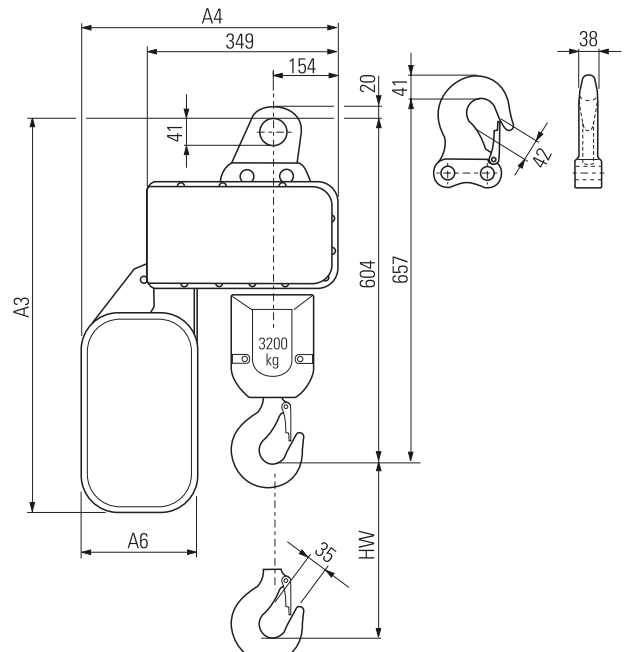
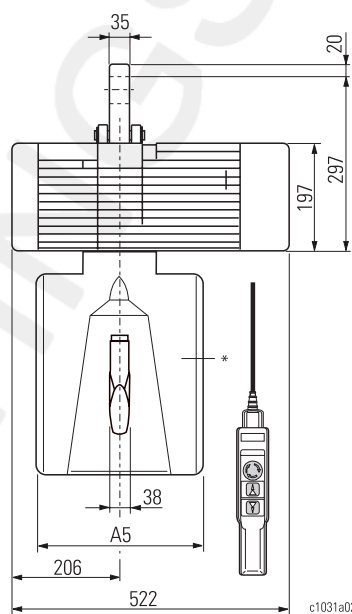
Selection table: ↑ 14

Tableau de sélection : ↑ 14



2/1

HW	A3	A4	A5	A6	K	S	T	Option
	[mm]							
2,2	586	424	160	160	K	S	S	Standard
10	711	466	300	210	K	S	S	Standard
25	892	636	300	380	S	S	S	Standard
40	1092	706	300	450	S	S	S	Standard
6	610	466	296	210	T	S	S	Option
10	730	466	296	210	T	S	S	Option
10	730	466	300	209	S	S	S	Option



* Material des Kettenspeichers
K = Kunststoff
S = Stahlblech
T = Textil

* Material of chain box
K = Plastic
S = Sheet metal
T = Fabric

* Matériau du bac à chaîne
K = Matière plastique
S = Tôle d'acier
T = Textile



ST 50 / ST 60

Kettenzug "stationär"

"Stationary" chain hoist

Palan à chaîne "fixe accroché"

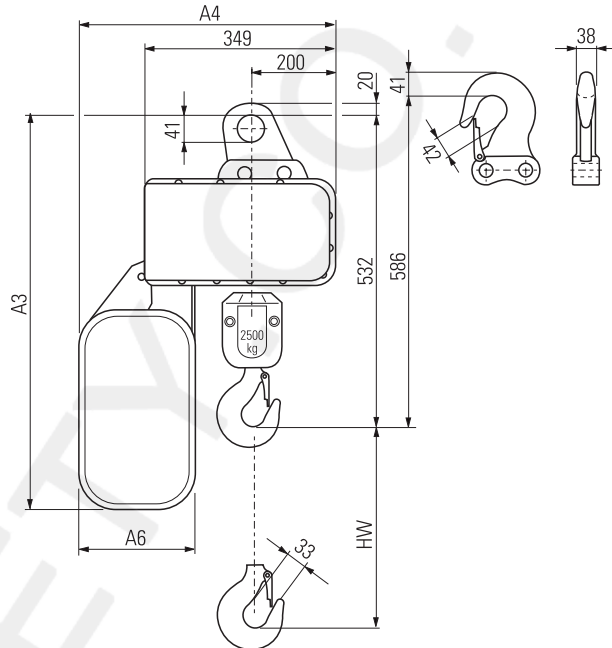
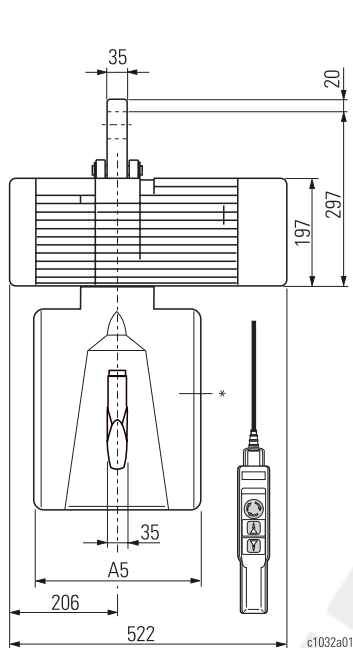
1/1

HW	A3 A4 A5 A6				K	S	T	Standard
	[mm]							
12	711	466	300	210	K	S		Standard
30	892	636	300	380	S			
50	1092	706	300	450	S			
8	610	466	296	210	T			Option
12	730	466	296	210	T			
12	730	466	300	209	S			

Auswahltabelle: ↑ 14

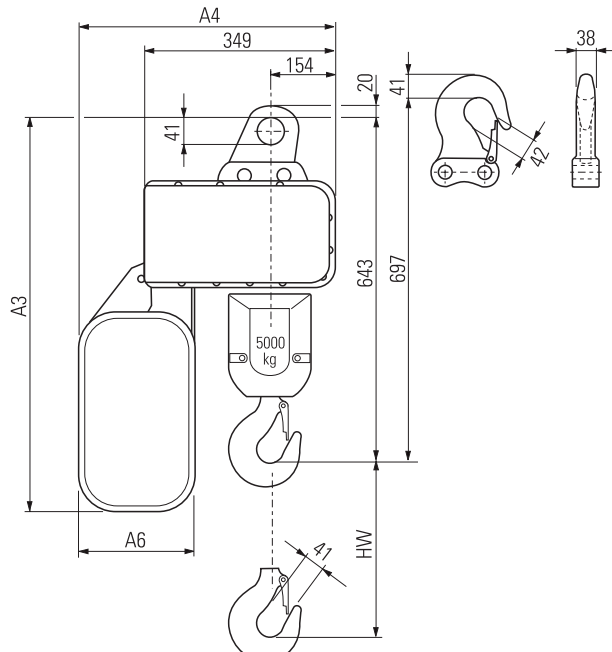
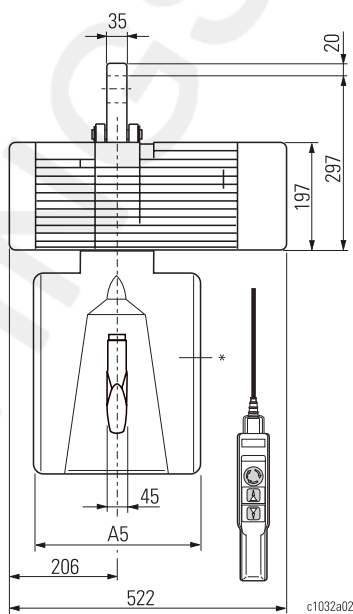
Selection table: ↑ 14

Tableau de sélection : ↑ 14



2/1

HW	A3 A4 A5 A6				K	S	T	Standard
	[mm]							
6	711	466	300	210	K	S		Standard
15	892	636	300	380	S			
25	1092	706	300	450	S			
4	610	466	296	210	T			Option
6	730	466	296	210	T			
6	730	466	300	209	S			



* Material des Kettenspeichers
 K = Kunststoff
 S = Stahlblech
 T = Textil

* Material of chain box
 K = Plastic
 S = Sheet metal
 T = Fabric

* Matériau du bac à chaîne
 K = Matière plastique
 S = Tôle d'acier
 T = Textile



ST 05

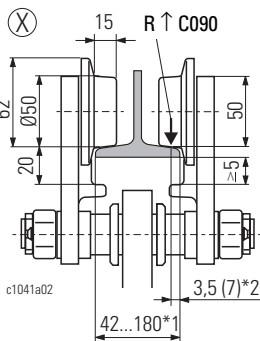
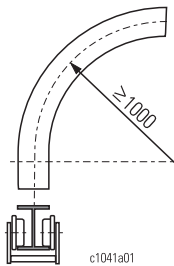
Rollfahwerk

Push trolley

Chariot de direction par poussée

1/1

US-G 10							*
HW	B3	B4	B5	B6	B7	K	S
[m]	[mm]						
7	391	281	145	90	425	K	S
15	491	303		100	525	S	S
24	537	303		100	525	S	S
7	420	303	145	100	454	S	Opt.



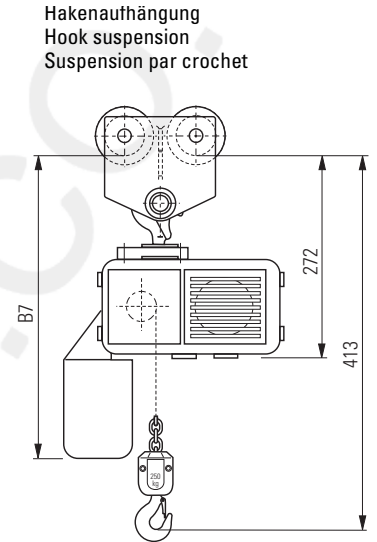
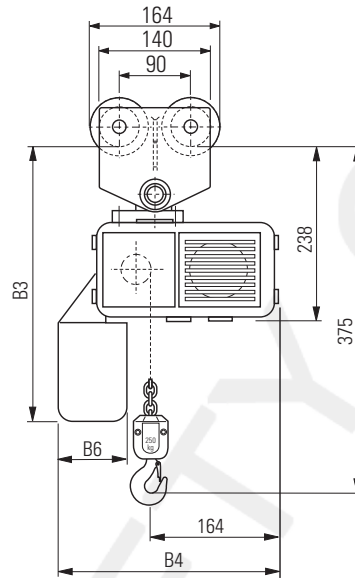
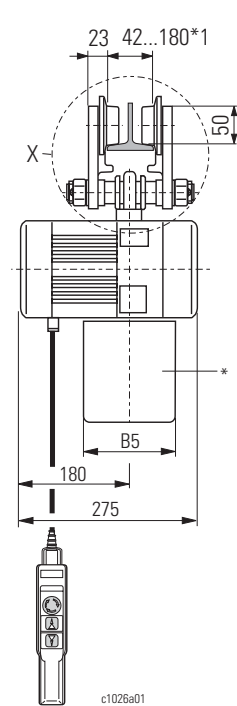
2/1

US-G 10							*
HW	B3	B4	B5	B6	B7	K	S
[m]	[mm]						
3,5	391	281	145	90	425	K	S
7,5	491	303		100	525	S	S
12	537	303		100	525	S	S
3,5	420	303	145	100	454	S	Opt.

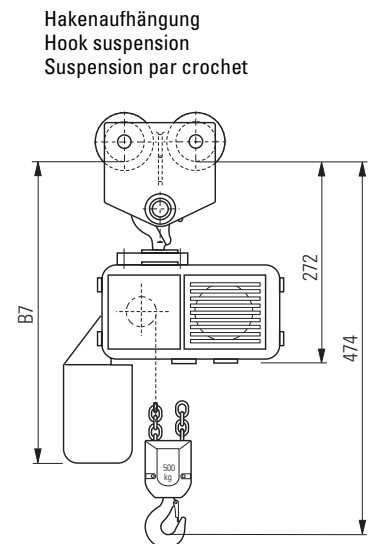
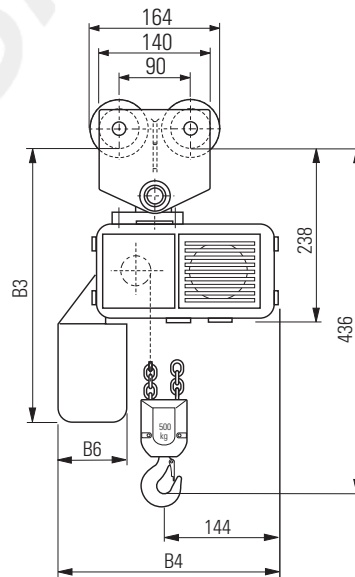
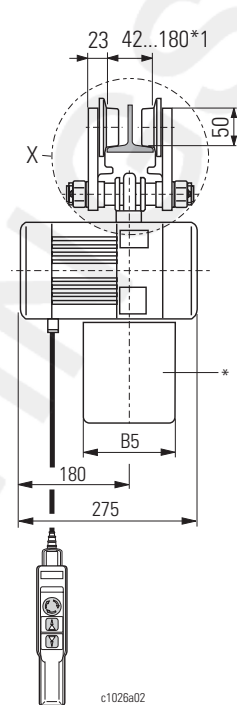
Auswahltable: ↑ 14

Selection table: ↑ 14

Tableau de sélection : ↑ 14



Rollfahwerk mit starrer Befestigung siehe A191 oder Seite 24.
Push trolley with rigid connection see A191 or page 24.
Chariot de direction par poussée à suspension rigide voir A191 ou page 24.



* Material des Kettenspeichers
K = Kunststoff
S = Stahlblech
T = Textil
*1 Standard
*2 Bei geneigtem Flansch

* Material of chain box
K = Plastic
S = Sheet metal
T = Fabric
*1 Standard
*2 With sloping flange

* Matériau du bac à chaîne
K = Matière plastique
S = Tôle d'acier
T = Textile
*1 Standard
*2 Avec bride inclinée



ST 10

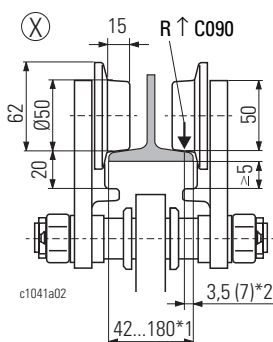
Rollfahwerk

Push trolley

Chariot de direction par poussée

1/1

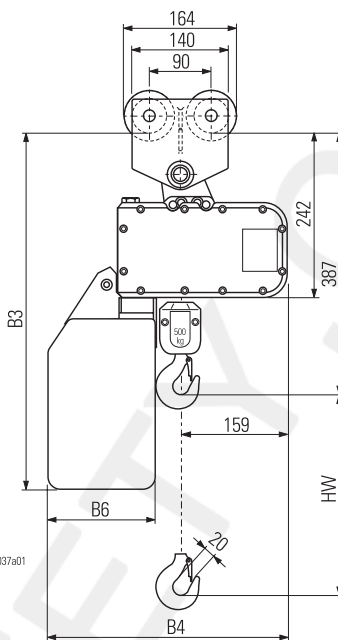
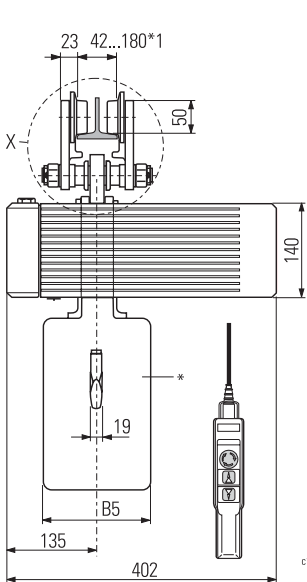
US-G 10							*
HW	B3	B4	B5	B6	B7	Standard	
[m]	[mm]						
12	529	352	160	160	559	K	Standard
25	616	347	150	155	646	T	
30	696	347	150	155	726	T	
50	706	347	320	155	716	T	
60	746	347	320	155	766	S	
12	516	347	150	155	546	S	Option
25	616	347	150	155	646	S	
30	696	347	150	155	726	S	



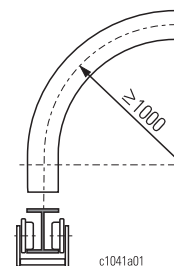
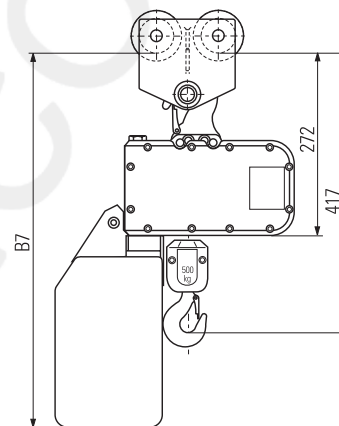
Auswahltabelle: ↑ 14

Selection table: ↑ 14

Tableau de sélection : ↑ 14



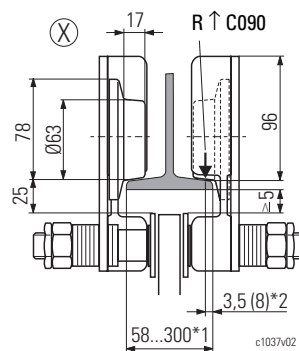
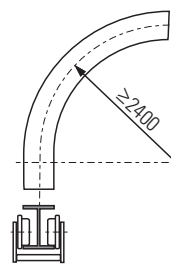
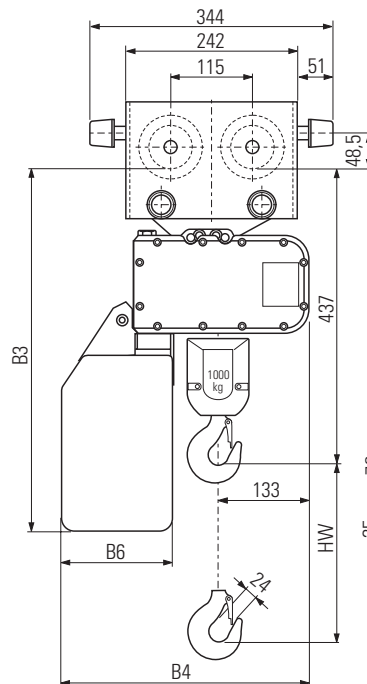
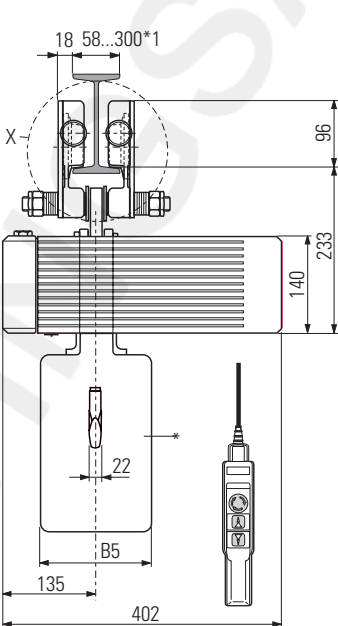
Hakenaufhängung
Hook suspension
Suspension par crochet



Rollfahwerk mit starrer Befestigung siehe A191 oder Seite 24.
Push trolley with rigid connection see A191 or page 24.
Chariot de direction par poussée à suspension rigide voir A191 ou page 24.

2/1

KFN 10.10H						*
HW	B3	B4	B5	B6	Standard	
[m]	[mm]					
6	519	352	160	160	K	Standard
12,5	606	347	150	155	T	
15	686	347	150	155	T	
25	696	347	320	155	T	
30	736	347	320	155	S	
6	506	347	150	155	S	Option
12,5	606	347	150	155	S	
15	686	347	150	155	S	



* Material des Kettenspeichers
K = Kunststoff
S = Stahlblech
T = Textil
*1 Standard
*2 Bei geneigtem Flansch

* Material of chain box
K = Plastic
S = Sheet metal
T = Fabric
*1 Standard
*2 With sloping flange

* Matériau du bac à chaîne
K = Matière plastique
S = Tôle d'acier
T = Textile
*1 Standard
*2 Avec bride inclinée



ST 20

Rollfahwerk

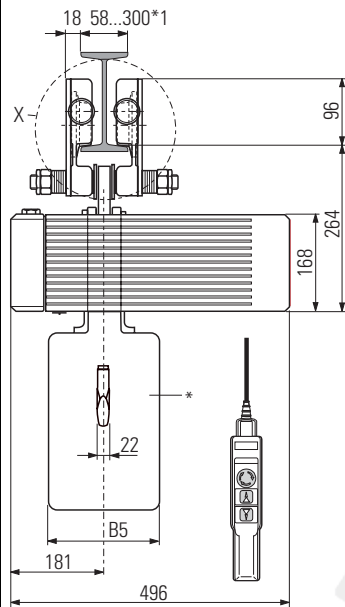
Push trolley

Chariot de direction par poussée

1/1

KFN 10.20H						
HW	B3	B4	B5	B6	K	Standard
	[mm]					
8	558	398	160	160	T	Standard
16	645	393	150	155	T	
22	725	393	150	155	T	
30	735	393	320	155	T	
40	775	393	320	155	S	Option
8	545	393	150	155	S	
16	645	393	150	155	S	
22	725	393	150	155	S	

Auswahltable: ↑ 14



Selection table: ↑ 14

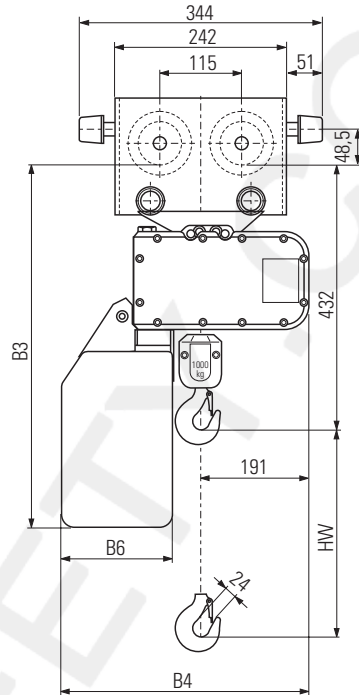
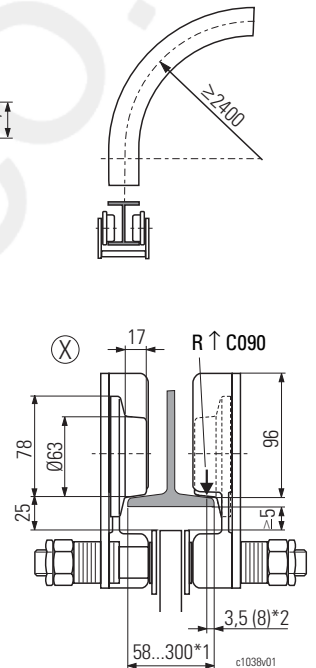
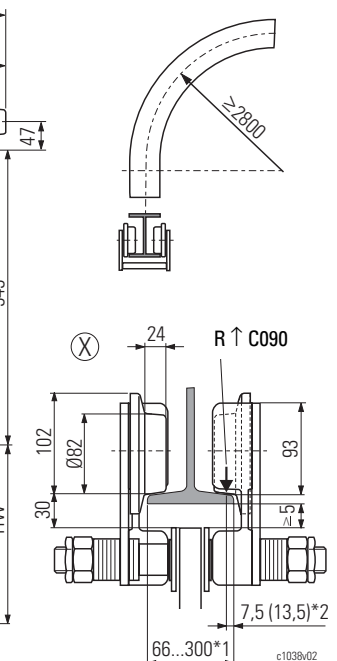
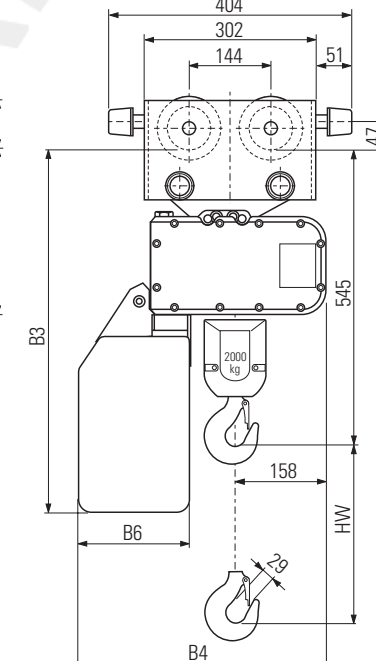
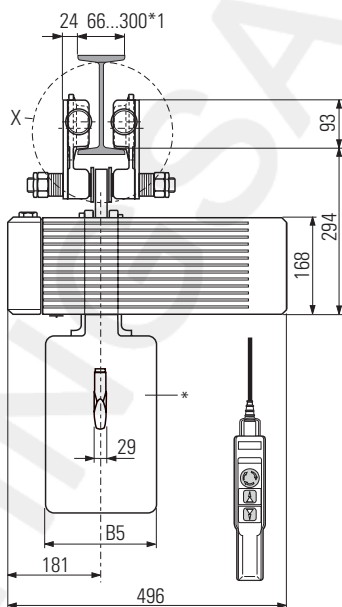


Tableau de sélection : ↑ 14



2/1

KFN 32.20H						
HW	B3	B4	B5	B6	K	Standard
	[mm]					
4	589	398	160	160	T	Standard
8	676	393	150	155	T	
11	756	393	150	155	T	
15	766	393	320	155	T	
20	806	393	320	155	S	
4	576	393	150	155	S	Option
8	676	393	150	155	S	
11	756	393	150	155	S	



Abmessungen der Rollfahwerke für Tragfähigkeiten bis 3200 kg siehe Elektrofahrwerke (ohne Fahrtrieb).

Dimensions of push trolleys for working loads up to 3200 kg see electric trolleys (without travel drive).

Pour les dimensions des chariots de direction par poussée jusqu'à une charge d'utilisation de 3200 kg, voir chariots électriques (sans groupe d'entraînement).

* Material des Kettenspeichers
K = Kunststoff
S = Stahlblech
T = Textil
*1 Standard
*2 Bei geneigtem Flansch

* Material of chain box
K = Plastic
S = Sheet metal
T = Fabric
*1 Standard
*2 With sloping flange

* Matériau du bac à chaîne
K = Matière plastique
S = Tôle d'acier
T = Textile
*1 Standard
*2 Avec bride inclinée



ST 05

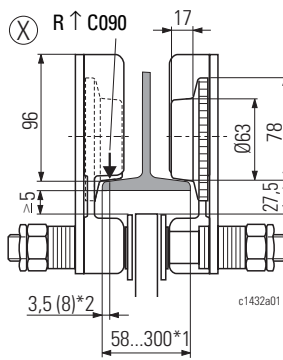
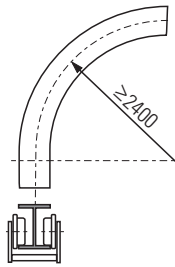
Elektrofahwerk
"normale Bauhöhe"

"Standard headroom"
electric trolley

Chariot électrique
"hauteur perdue normale"

1/1

KFN 10.05E						*
HW	C3	C4	C5	C6		
[m]	[mm]					
7	357	281	145	90	K	Standard
15	457	303		100	S	
24	457	303		100	S	
7	386	303	145	100	S	Option



2/1

KFN 10.05E						*
HW	C3	C4	C5	C6		
[m]	[mm]					
3,5	357	281	145	90	K	Standard
7,5	457	303		100	S	
12	457	303		100	S	
3,5	386	303	145	100	S	Option

* Material des Kettenspeichers

K = Kunststoff
 S = Stahlblech
 T = Textil

*1 Standard; bei Flanschbreite >260 mm sind Führungsrollen erforderlich

*2 Bei geneigtem Flansch

* Material of chain box

K = Plastic
 S = Sheet metal
 T = Fabric

*1 Standard; guide rollers necessary for flange width >260 mm

*2 With sloping flange

* Matériau du bac à chaîne

K = Matière plastique
 S = Tôle d'acier
 T = Textil

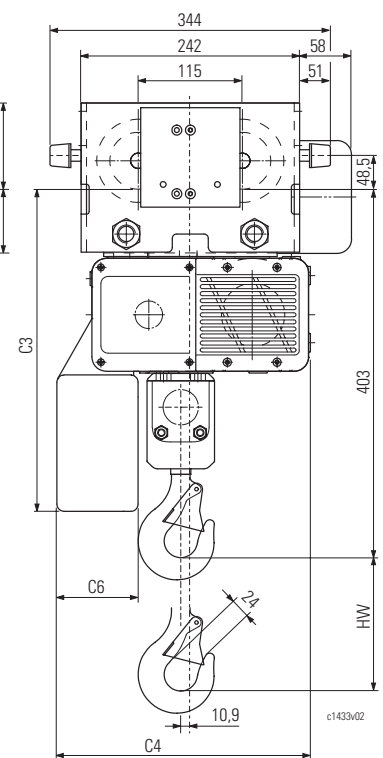
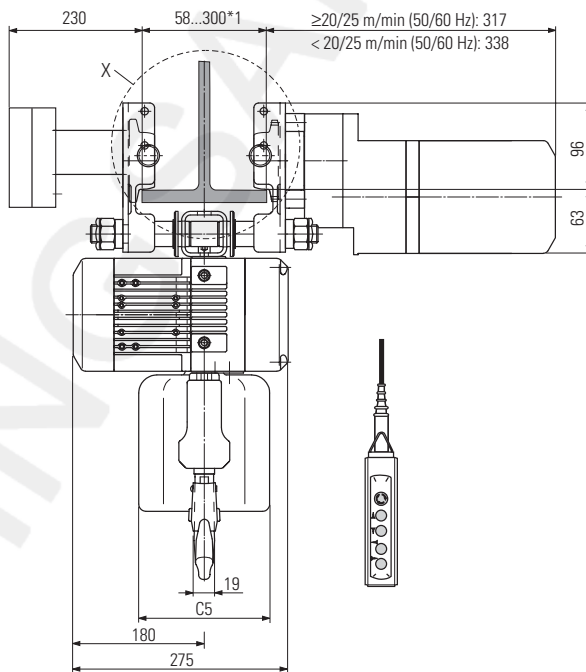
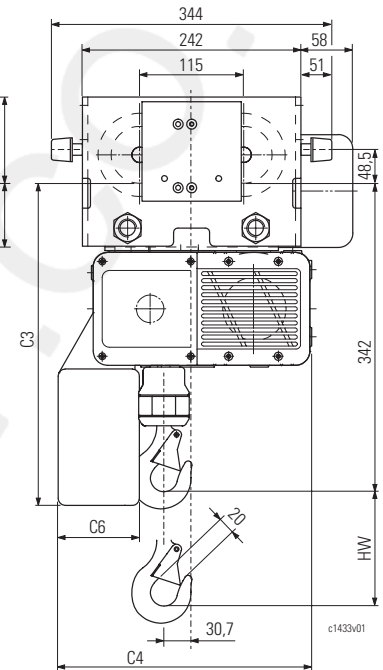
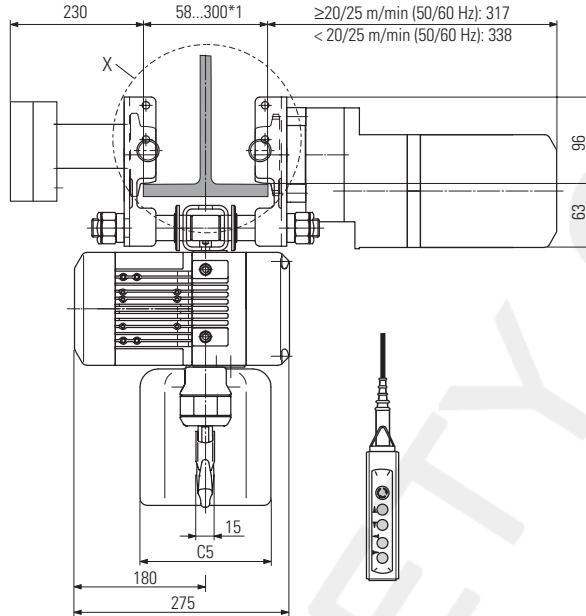
*1 Standard; galets de guidage nécessaires pour largeur d'aile >260 mm.

*2 Avec bride inclinée

Auswahltabelle: ↑ 14

Selection table: ↑ 14

Tableau de sélection : ↑ 14





ST 10

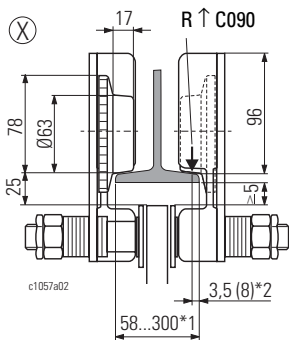
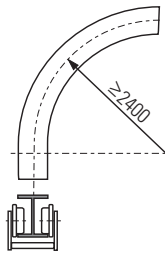
Elektrofahwerk "normale Bauhöhe"

"Standard headroom" electric trolley

Chariot électrique "hauteur perdue normale"

1/1

=1/1	KFN 10.10E				*		
	HW	C3	C4	C5			C6
	[m]	[mm]					
12	519	352	160	160	K	Standard	
25	606	347	150	155	T		
30	686	347	150	155	T		
50	696	347	320	155	T		
60	736	347	320	155	S		
12	506	347	150	155	S	Option	
25	606	347	150	155	S		
30	686	347	150	155	S		



2/1

=2/1	KFN 10.10E				*		
	HW	C3	C4	C5			C6
	[m]	[mm]					
6	519	352	160	160	K	Standard	
12,5	606	347	150	155	T		
15	686	347	150	155	T		
25	696	347	320	155	T		
30	736	347	320	155	S		
6	506	347	150	155	S	Option	
12,5	606	347	150	155	S		
15	686	347	150	155	S		

* Material des Kettenspeichers
K = Kunststoff
S = Stahlblech
T = Textil

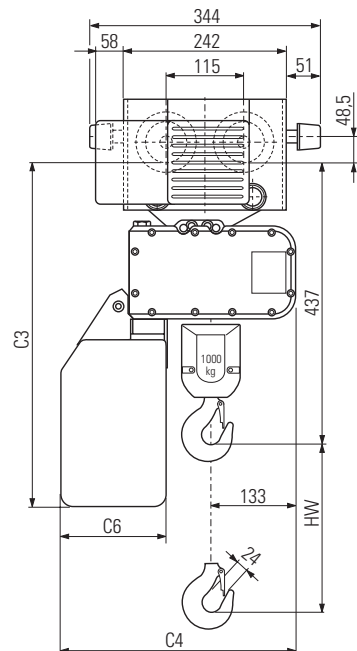
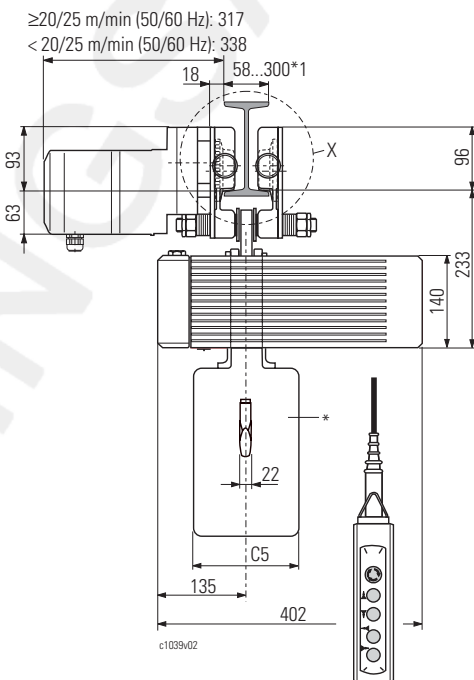
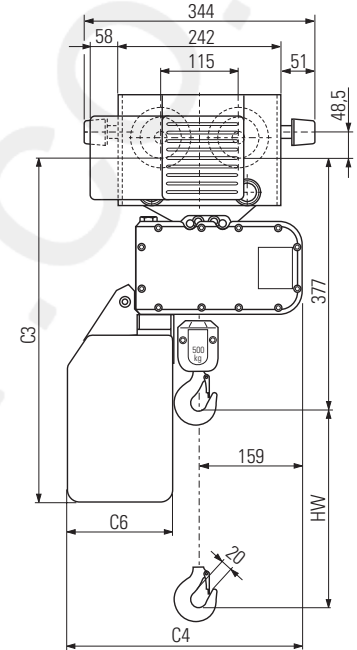
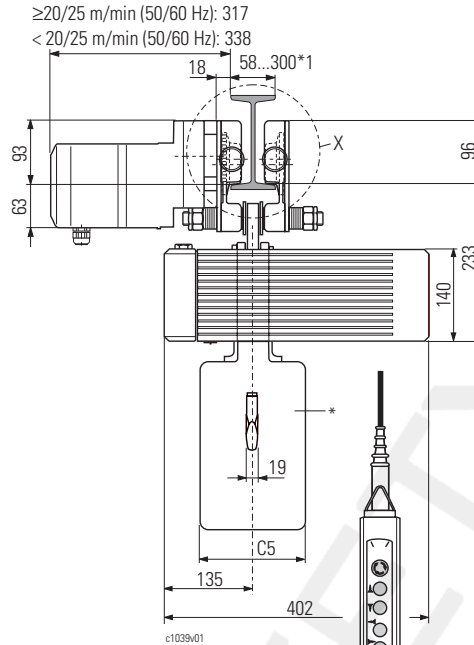
*1 Standard; bei Flanschbreite >260 mm sind Führungsrollen erforderlich

*2 Bei geneigtem Flansch

Auswahltabelle: ↑ 14

Selection table: ↑ 14

Tableau de sélection : ↑ 14



* Material of chain box
K = Plastic
S = Sheet metal
T = Fabric

*1 Standard; guide rollers necessary for flange width >260 mm

*2 With sloping flange

* Matériau du bac à chaîne
K = Matière plastique
S = Tôle d'acier
T = Textile

*1 Standard; galets de guidage nécessaires pour largeur d'aile >260 mm.

*2 Avec bride inclinée



ST 20

Elektrofahwerk
"normale Bauhöhe"

"Standard headroom"
electric trolley

Chariot électrique
"hauteur perdue normale"

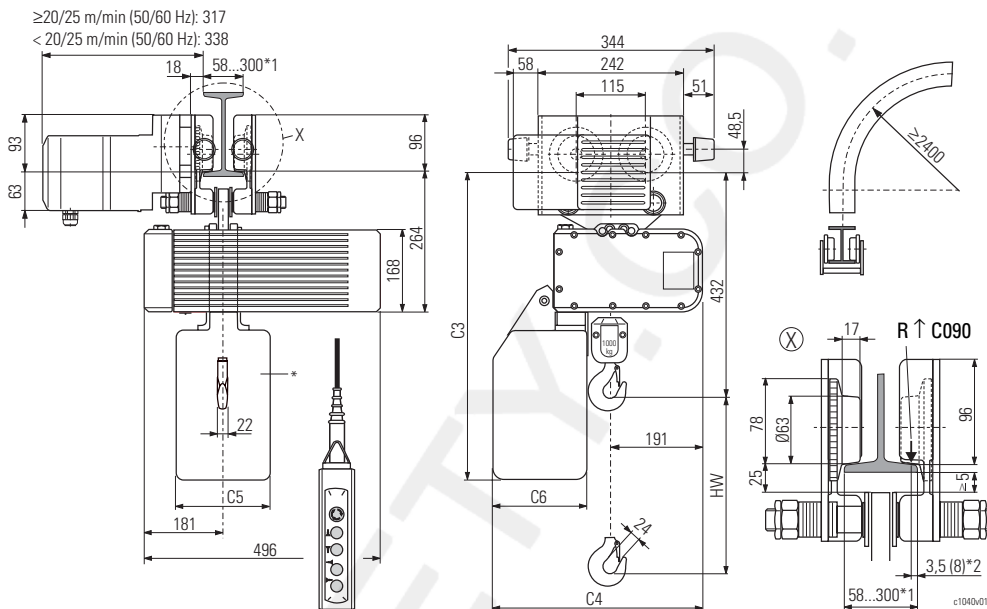
1/1

KFN 10.20E						*
HW	C3	C4	C5	C6		
[m]	[mm]					
8	558	398	160	160	K	Standard
16	645	393	150	155	T	
22	725	393	150	155	T	
30	735	393	320	155	T	
40	775	393	320	155	S	Option
8	545	393	150	155	S	
16	645	393	150	155	S	
22	725	393	150	155	S	

Auswahltabelle: ↑ 14

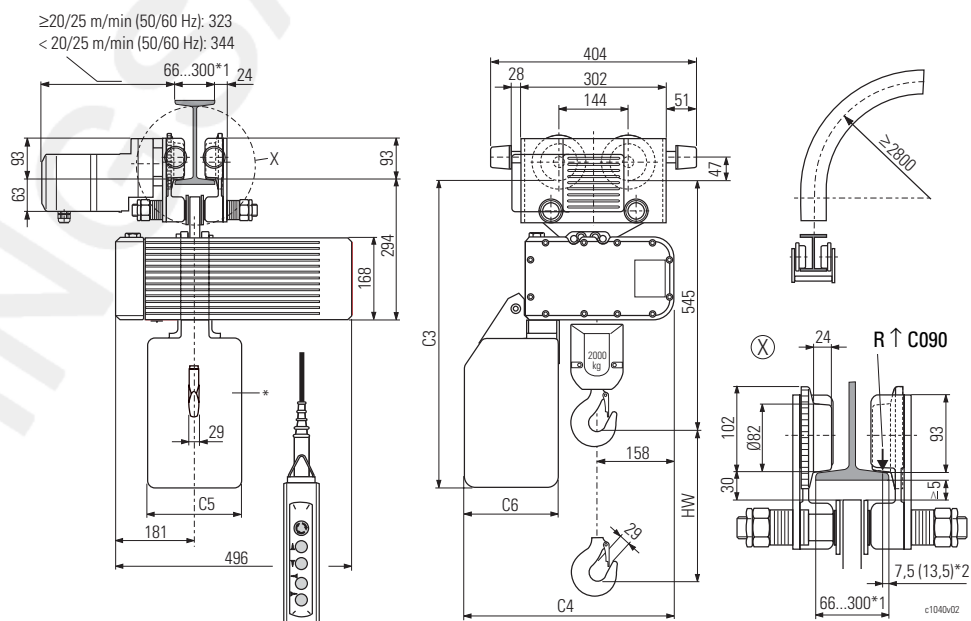
Selection table: ↑ 14

Tableau de sélection : ↑ 14



2/1

KFN 32.20E						*
HW	C3	C4	C5	C6		
[m]	[mm]					
4	589	398	160	160	K	Standard
8	676	393	150	155	T	
11	756	393	150	155	T	
15	746	393	320	155	T	
20	796	393	320	155	S	Option
4	576	393	150	155	S	
8	766	393	150	155	S	
11	806	393	150	155	S	



* Material des Kettenspeichers
K = Kunststoff
S = Stahlblech
T = Textil

*1 Standard; bei Flanschbreite >260 mm sind Führungsrollen erforderlich

*2 Bei geneigtem Flansch

* Material of chain box
K = Plastic
S = Sheet metal
T = Fabric

*1 Standard; guide rollers necessary for flange width >260 mm

*2 With sloping flange

* Matériau du bac à chaîne
K = Matière plastique
S = Tôle d'acier
T = Textile

*1 Standard; galets de guidage nécessaires pour largeur d'aile >260 mm.

*2 Avec bride inclinée



ST 30

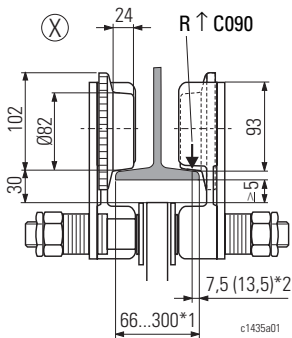
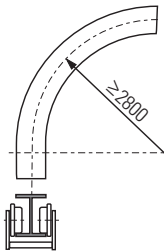
Elektrofahwerk "normale Bauhöhe"

"Standard headroom" electric trolley

Chariot électrique "hauteur perdue normale"

1/1

=1/1	KFN 32.20E				*	Standard	
	HW	C3	C4	C5			C6
	[m]	[mm]					
4,5	589	398	160	160	K	Standard	
10	676	393	150	155	T		
12	756	393	150	155	T		
20	766	393	320	155	T		
30	806	393	320	155	S		
6	576	393	150	155	S	Option	
10	676	393	150	155	S		
12	756	393	150	155	S		



2/1

=2/1	KFN 32.20E				*	Standard	
	HW	C3	C4	C5			C6
	[m]	[mm]					
2,2	589	398	160	160	K	Standard	
5	676	393	150	155	T		
6	756	393	150	155	T		
10	766	393	320	155	T		
15	806	393	320	155	S		
3	576	393	150	155	S	Option	
5	676	393	150	155	S		
6	756	393	150	155	S		

* Material des Kettenspeichers
K = Kunststoff
S = Stahlblech
T = Textil

*1 Standard; bei Flanschbreite > 260 mm sind Führungsrollen erforderlich

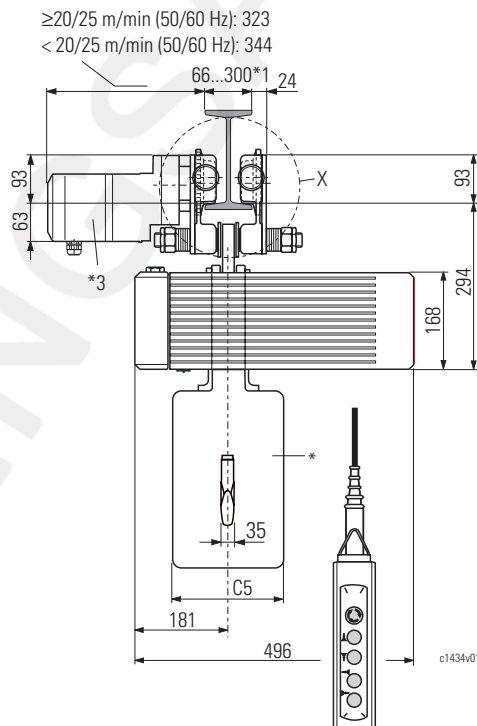
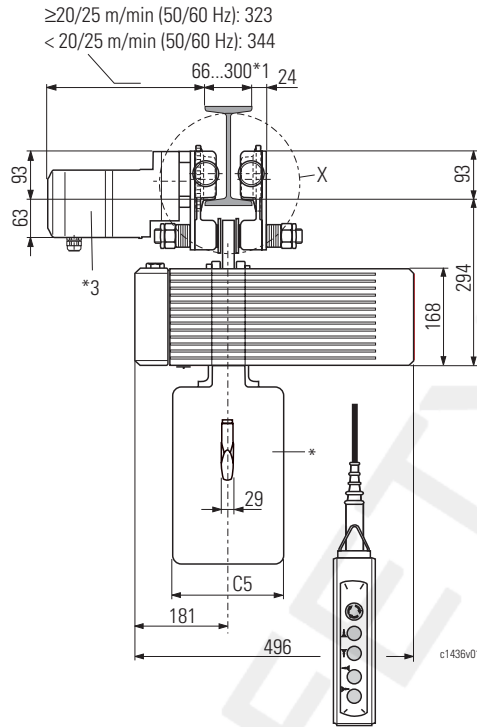
*2 Bei geneigtem Flansch

*3 Entfällt bei Rollfahwerk

Auswahltabelle: ↑ 14

Selection table: ↑ 14

Tableau de sélection : ↑ 14

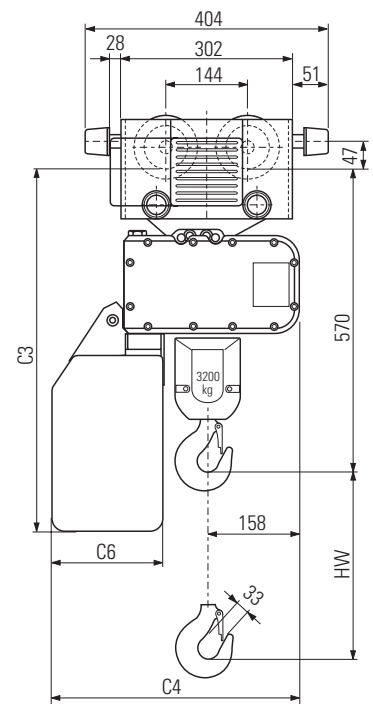
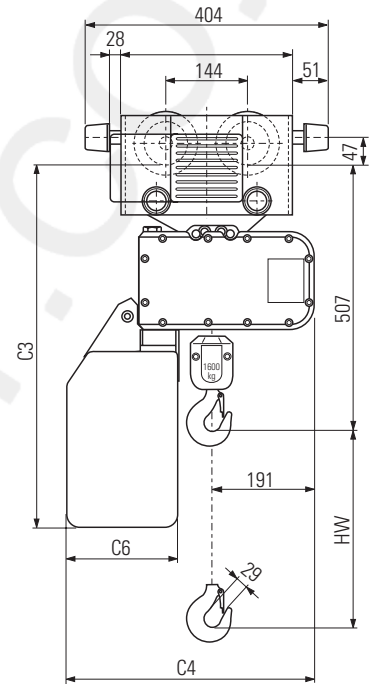


* Material of chain box
K = Plastic
S = Sheet metal
T = Fabric

*1 Standard; guide rollers necessary for flange width >260 mm

*2 With sloping flange

*3 N/A with push trolley



* Matériau du bac à chaîne
K = Matière plastique
S = Tôle d'acier
T = Textil

*1 Standard; galets de guidage nécessaires pour largeur d'aile >260 mm.

*2 Avec bride inclinée

*3 Se supprime sur chariot de direction par poussée



ST 32

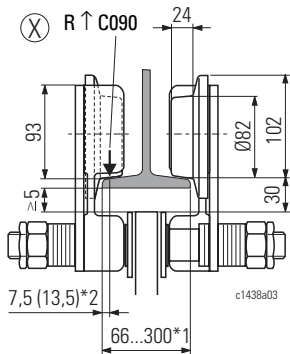
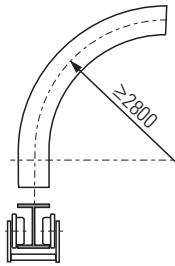
Elektrofahwerk
"normale Bauhöhe"

"Standard headroom"
electric trolley

Chariot électrique
"hauteur perdue normale"

1/1

HW	KFN 32.32E				*	*
	C3	C4	C5	C6		
[m]	[mm]				Standard	S
4,5	639	424	160	160		
20	765	466	300	210		
50	945	646	300	380		
80	1145	716	300	450	S	Option
12	664	466	296	210	T	
20	784	466	296	210	T	
20	784	466	300	209	S	



2/1

HW	KFN 32.32E				*	*
	C3	C4	C5	C6		
[m]	[mm]				Standard	S
2,2	639	424	160	160		
10	765	466	300	210		
25	945	646	300	380		
40	1145	716	300	450	S	Option
6	664	466	296	210	T	
10	784	466	296	210	T	
10	784	466	300	209	S	

* Material des Kettenspeichers
K = Kunststoff
S = Stahlblech
T = Textil

*1 Standard; bei Flanschbreite > 260 mm sind Führungsrollen erforderlich

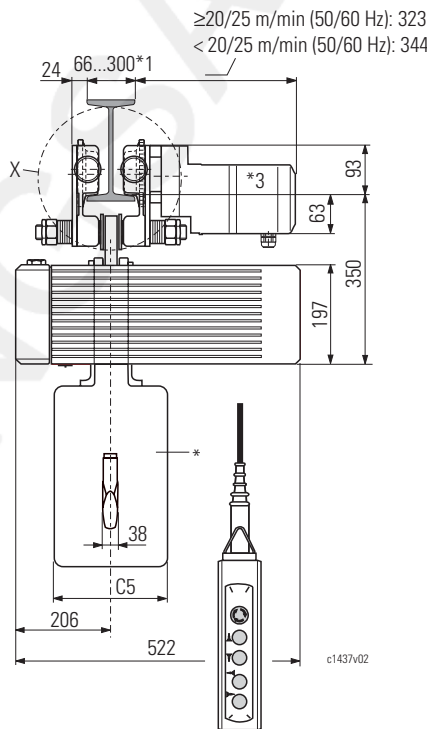
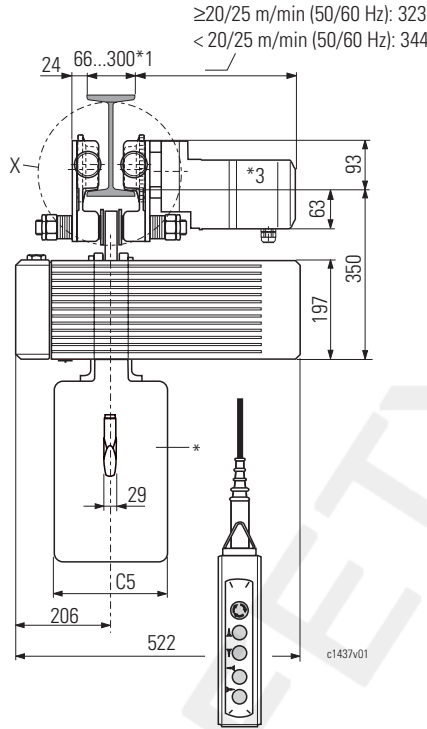
*2 Bei geneigtem Flansch

*3 Entfällt bei Rollfahwerk

Auswahltabelle: ↑ 14

Selection table: ↑ 14

Tableau de sélection : ↑ 14

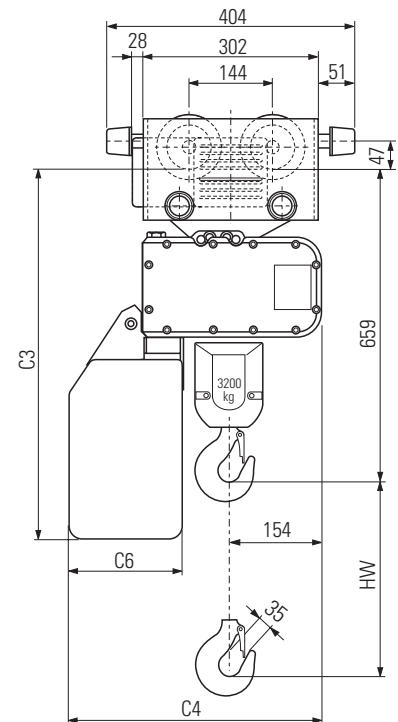
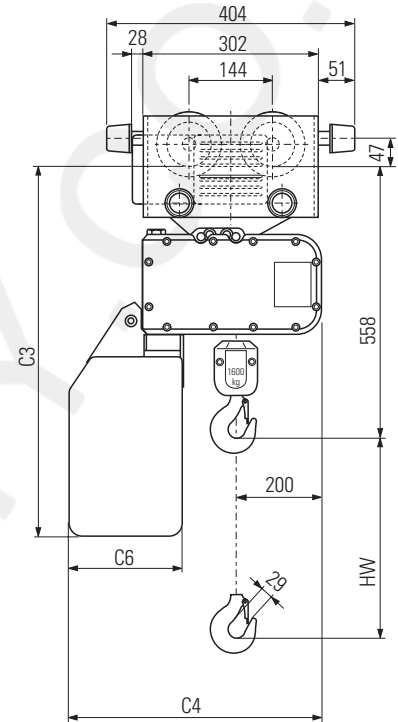


* Material of chain box
K = Plastic
S = Sheet metal
T = Fabric

*1 Standard; guide rollers necessary for flange width >260 mm

*2 With sloping flange

*3 N/A with push trolley



* Matériau du bac à chaîne
K = Matière plastique
S = Tôle d'acier
T = Textil

*1 Standard; galets de guidage nécessaires pour largeur d'aile >260 mm.

*2 Avec bride inclinée

*3 Se supprime sur chariot de direction par poussée



ST 50 / ST 60

Elektrofahwerk
"normale Bauhöhe"

"Standard headroom"
electric trolley

Chariot électrique
"hauteur perdue normale"

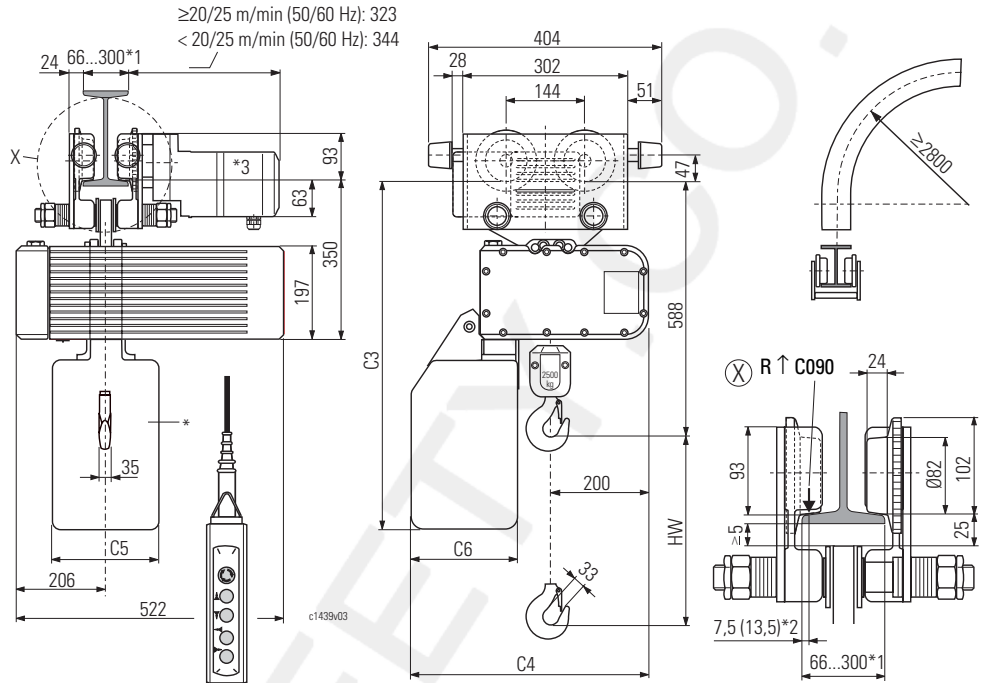
1/1

KFN 32.32E							*
HW	C3	C4	C5	C6			
[m]	[mm]						
12	765	466	300	210	K	Standard	S
30	945	636	300	380	S		
50	1145	706	300	450	S		
8	664	466	296	210	T	Option	S
12	784	466	296	210	T		
12	784	466	300	209	S		

Auswahltabelle: ↑ 14

Selection table: ↑ 14

Tableau de sélection : ↑ 14

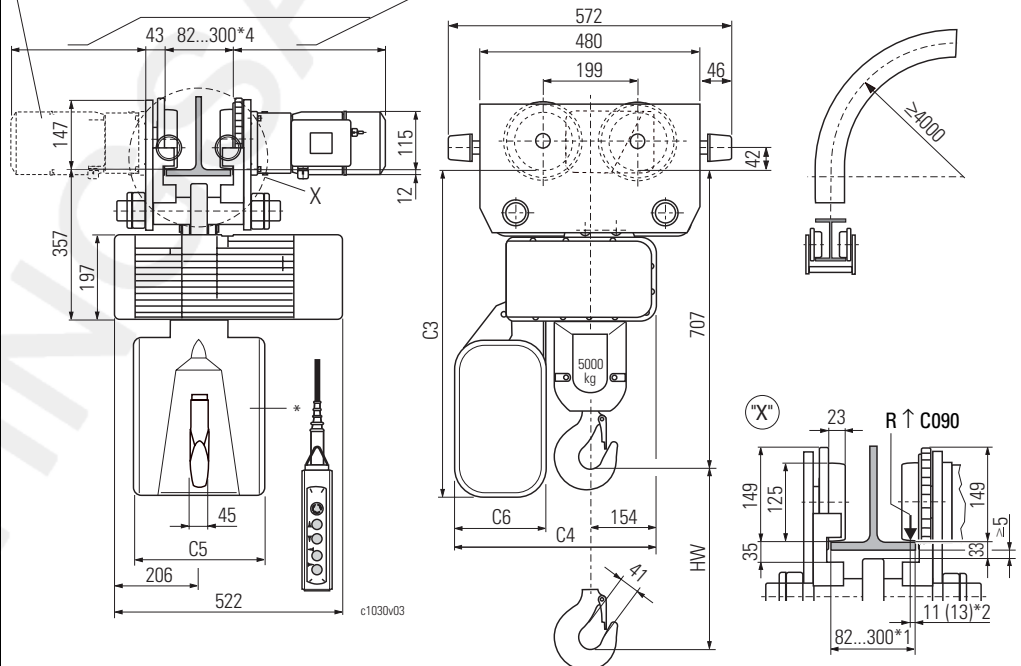


2/1

KFN 63.50E							*
HW	C3	C4	C5	C6			
[m]	[mm]						
6	773	466	300	209	K	Standard	S
15	953	636	300	380	S		
25	1153	706	300	450	S		
4	672	466	296	210	T	Option	S
6	792	466	296	210	T		
6	792	466	300	209	S		

6300 kg ≥20/25 m/min (50/60 Hz): 2x SU-A ..
5000 kg ≥25/32 m/min (50/60 Hz): 2x SU-A ..

≥20/25 m/min (50/60 Hz): 321
< 20/25 m/min (50/60 Hz): 342



* Material des Kettenspeichers
K = Kunststoff
S = Stahlblech
T = Textil

*1 Standard; bei Flanschbreite > 260 mm sind Führungsrollen erforderlich
*2 Bei geneigtem Flansch
*3 Entfällt bei Rollfahwerk
*4 Bei Flanschbreite > 300 mm sind Führungsrollen erforderlich

* Material of chain box
K = Plastic
S = Sheet metal
T = Fabric

*1 Standard; guide rollers necessary for flange width >260 mm
*2 With sloping flange
*3 N/a with push trolley
*4 Guide rollers necessary for flange width >300 mm

* Matériau du bac à chaîne
K = Matière plastique
S = Tôle d'acier
T = Textil

*1 Standard; galets de guidage nécessaires pour largeur d'aile >260 mm.
*2 Avec bride inclinée
*3 Se supprime sur chariot de direction par poussée
*4 Galets de guidage nécessaires pour largeur d'aile >300 mm.




ST 05

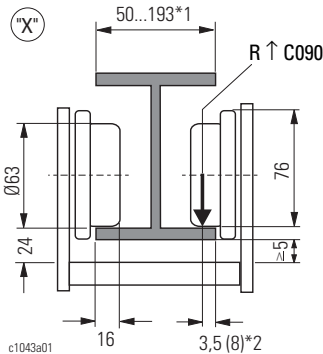
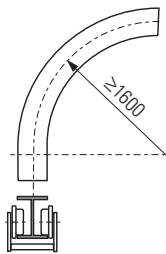
Elektrofahwerk
"kurze Bauhöhe"

"Short headroom"
electric trolley

Chariot électrique
"hauteur perdue réduite"


1/1

	KE-T 22	*	
=1/1			
HW	D3		
[m]	[mm]		
7	274	K	Stand.
15	374	S	
24	423	S	
7	303	S	Opt.



ST 0502

2/1

	KE-T 22	*	
=2/1			
HW	D3		
[m]	[mm]		
3,5	274	K	Stand.
7,5	374	S	
12	423	S	
3,5	303	S	Opt.

* Material des Kettenspeichers
K = Kunststoff
S = Stahlblech
T = Textil
*1 Standard
*2 Bei geneigtem Flansch

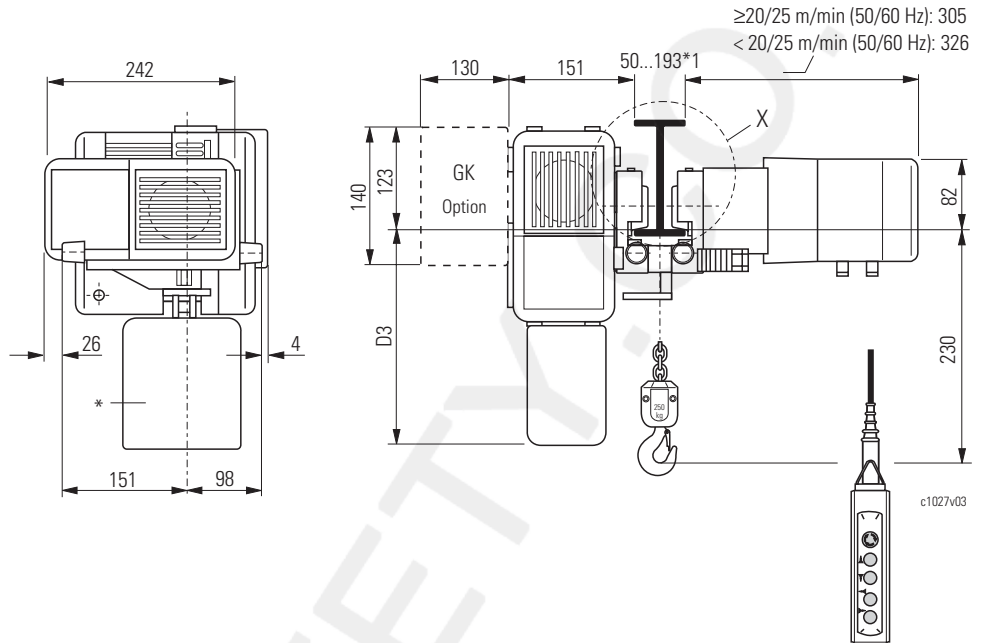
* Material of chain box
K = Plastic
S = Sheet metal
T = Fabric
*1 Standard
*2 With sloping flange

* Matériau du bac à chaîne
K = Matière plastique
S = Tôle d'acier
T = Textile
*1 Standard
*2 Avec bride inclinée

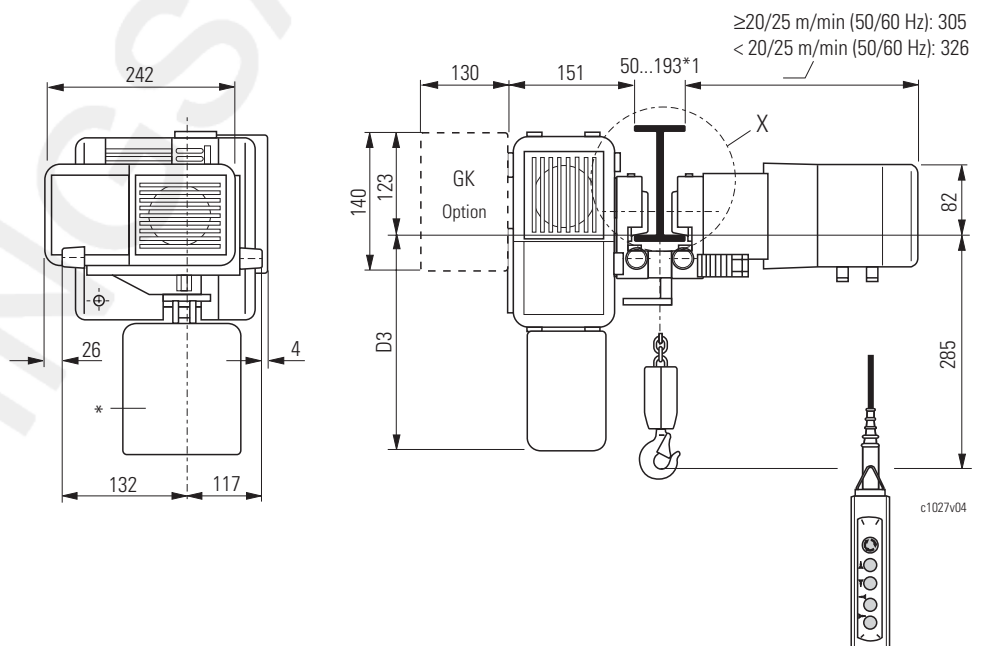
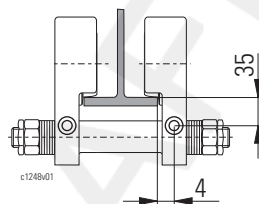
Auswahltabelle: ↑ 14

Selection table: ↑ 14

Tableau de sélection : ↑ 14



Puffer
Buffers
Butoirs





ST 10

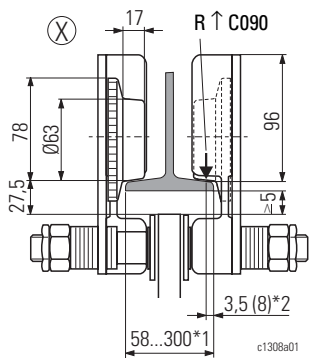
Elektrofahwerk "kurze Bauhöhe"

"Short headroom" electric trolley

Chariot électrique "hauteur perdue réduite"

1/1

=1/1	KFK 10.10E		*	
	HW	D3		
[m]	[mm]			
12	620	160	K	Standard
25	707	150	T	
30	787	150	T	
50	797	320	T	
60	837	320	S	
12	607	150	S	Option
25	707	150	S	
30	787	150	S	



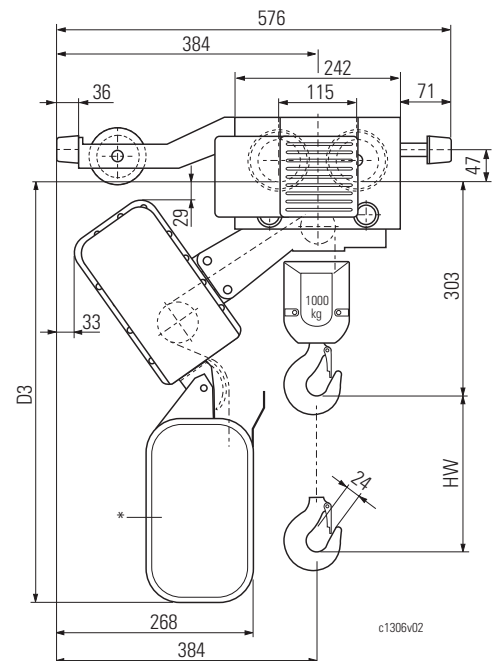
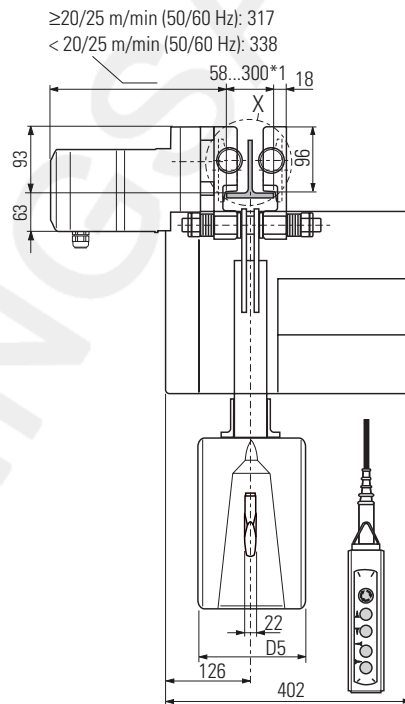
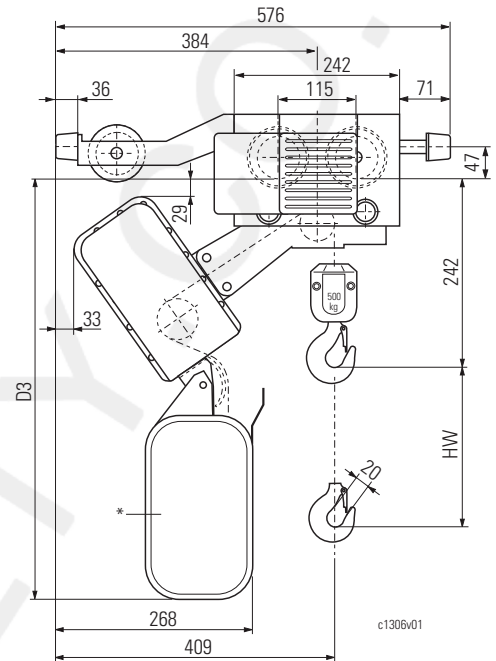
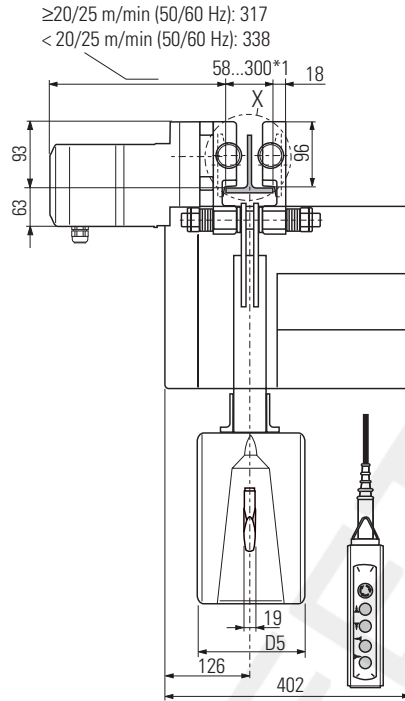
2/1

=2/1	KFK 10.10E		*	
	HW	D3		
[m]	[mm]			
6	620	160	K	Standard
12,5	707	150	T	
15	787	150	T	
25	797	320	T	
30	837	320	S	
6	607	150	S	Option
12,5	707	150	S	
15	787	150	S	

Auswahltabelle: ↑ 14

Selection table: ↑ 14

Tableau de sélection : ↑ 14



* Material des Kettenspeichers
K = Kunststoff
S = Stahlblech
T = Textil

*1 Standard; bei Flanschbreite > 260 mm sind Führungsrollen erforderlich

*2 Bei geneigtem Flansch

* Material of chain box
K = Plastic
S = Sheet metal
T = Fabric

*1 Standard; guide rollers necessary for flange width >260 mm

*2 With sloping flange

* Matériau du bac à chaîne
K = Matière plastique
S = Tôle d'acier
T = Textile

*1 Standard; galets de guidage nécessaires pour largeur d'aile >260 mm.

*2 Avec bride inclinée



ST 20

Elektrofahwerk
"kurze Bauhöhe"

"Short headroom"
electric trolley

Chariot électrique
"hauteur perdue réduite"

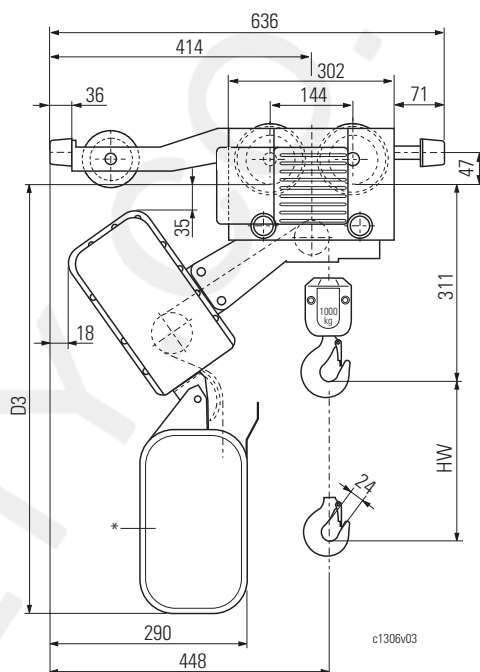
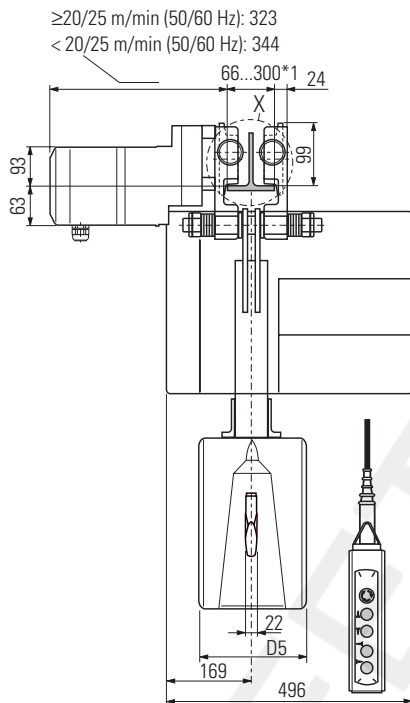
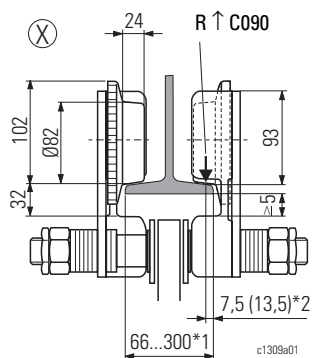
Auswahltabelle: ↑ 14

Selection table: ↑ 14

Tableau de sélection : ↑ 14

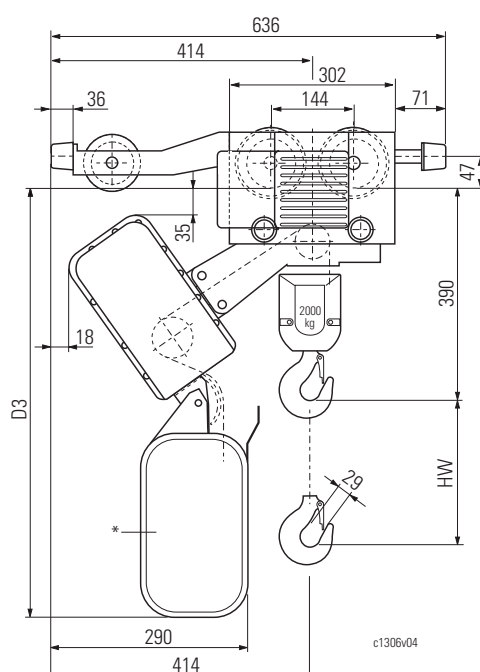
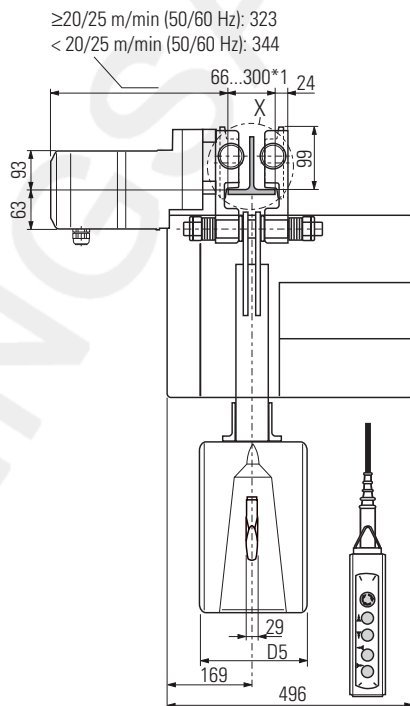
1/1

=1/1 kg	KFK 32.20E		*	
	HW	D3		
[m]	[mm]			
8	666	160	K	Standard
16	753	150	T	
22	833	150	T	
30	843	320	T	
40	883	320	S	
8	653	150	S	Option
16	753	150	S	
22	833	150	S	



2/1

=2/1 kg	KFK 32.20E		*	
	HW	D3		
[m]	[mm]			
4	666	160	K	Standard
8	753	150	T	
11	833	150	T	
15	843	320	T	
20	883	320	S	
4	653	150	S	Option
8	753	150	S	
11	833	150	S	



* Material des Kettenspeichers
 K = Kunststoff
 S = Stahlblech
 T = Textil

*1 Standard; bei Flanschbreite > 260 mm sind Führungsrollen erforderlich

*2 Bei geneigtem Flansch

* Material of chain box
 K = Plastic
 S = Sheet metal
 T = Fabric

*1 Standard; guide rollers necessary for flange width >260 mm

*2 With sloping flange

* Matériau du bac à chaîne
 K = Matière plastique
 S = Tôle d'acier
 T = Textile

*1 Standard; galets de guidage nécessaires pour largeur d'aile >260 mm.

*2 Avec bride inclinée



ST 30

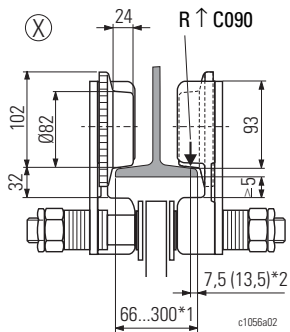
Elektrofahwerk "kurze Bauhöhe"

"Short headroom" electric trolley

Chariot électrique "hauteur perdue réduite"

1/1

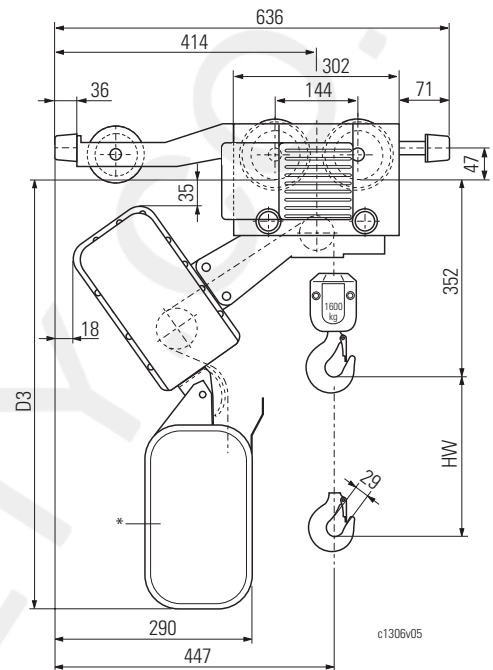
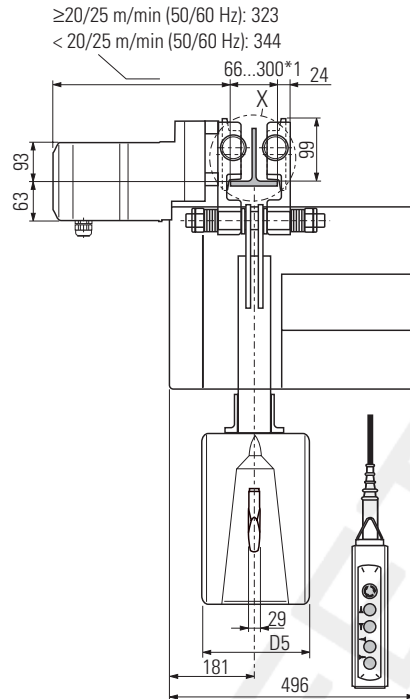
Kettenspeicher kg	KFK 32.30E		*		
	D3	D5			
=1/1	[mm]		Standard	S	
4,5	666	160			K
10	753	150			T
12	833	150			T
20	843	320			T
30	883	320	S		
6	653	150	S	Option	
10	753	150	S		
12	833	150	S		



Auswahltabelle: ↑ 14

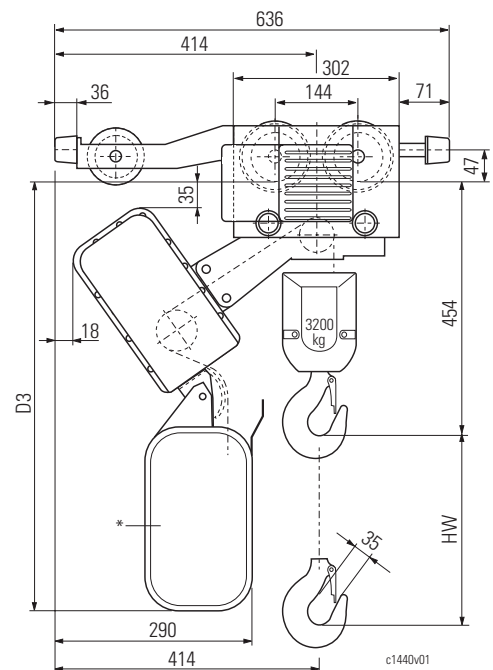
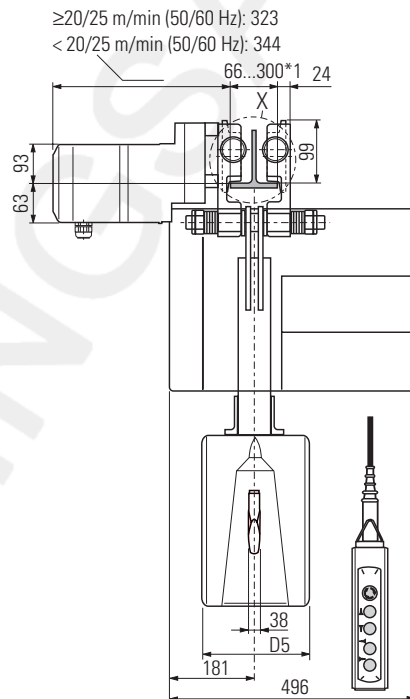
Selection table: ↑ 14

Tableau de sélection : ↑ 14



2/1

Kettenspeicher kg	KFK 32.30E		*		
	D3	D5			
=2/1	[mm]		Standard	S	
2,2	666	160			K
5	753	150			T
6	833	150			T
10	843	320			T
15	883	320	S		
3	653	150	S	Option	
5	753	150	S		
6	833	150	S		



* Material des Kettenspeichers

K = Kunststoff
S = Stahlblech
T = Textil

*1 Standard; bei Flanschbreite > 260 mm sind Führungsrollen erforderlich

*2 Bei geneigtem Flansch

*3 Standard; bei Flanschbreite > 300 mm sind Führungsrollen erforderlich

* Material of chain box

K = Plastic
S = Sheet metal
T = Fabric

*1 Standard; guide rollers necessary for flange width >260 mm

*2 With sloping flange

*3 Standard; guide rollers necessary for flange width >300 mm

* Matériau du bac à chaîne

K = Matière plastique
S = Tôle d'acier
T = Textil

*1 Standard; galets de guidage nécessaires pour largeur d'aile >260 mm

*2 Avec bride inclinée

*3 Standard; galets de guidage nécessaires pour largeur d'aile >300 mm



ST 32

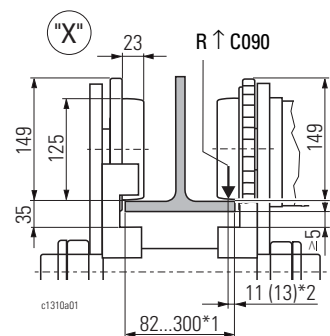
Elektrofahwerk
"kurze Bauhöhe"

"Short headroom"
electric trolley

Chariot électrique
"hauteur perdue réduite"

1/1

=1/1	KFK 63.32E		*	
	HW	D3		
[m]	[mm]			
20	891	300	K	Standard
50	1072	300	S	
80	1272	300	S	
12	791	296	T	Option
20	911	296	T	
20	911	300	S	



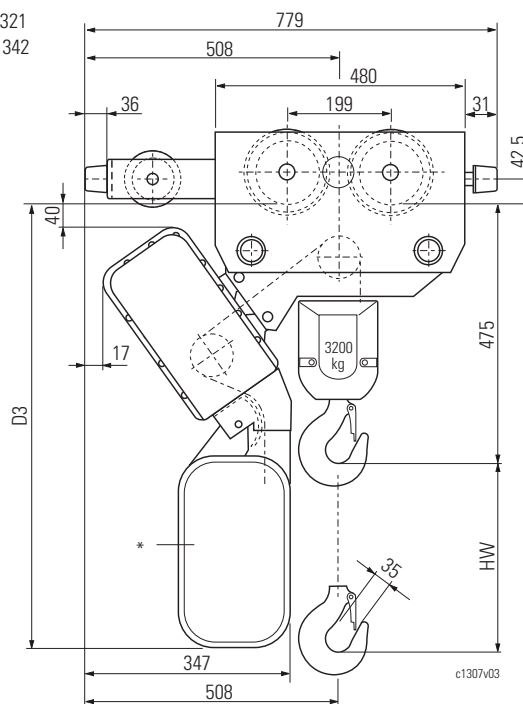
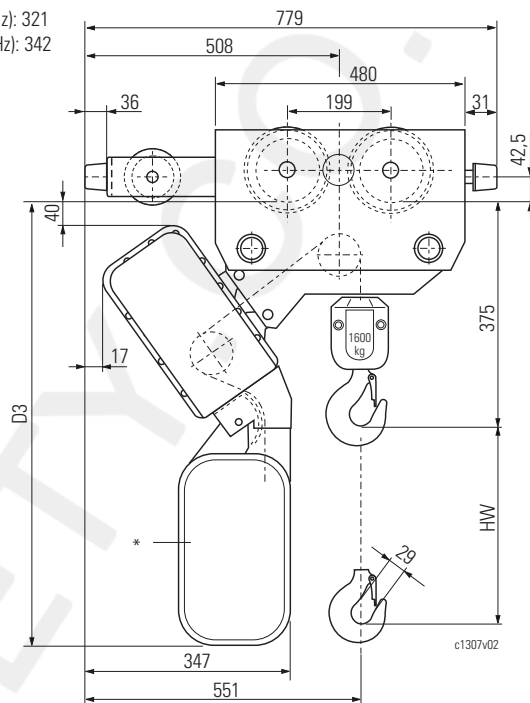
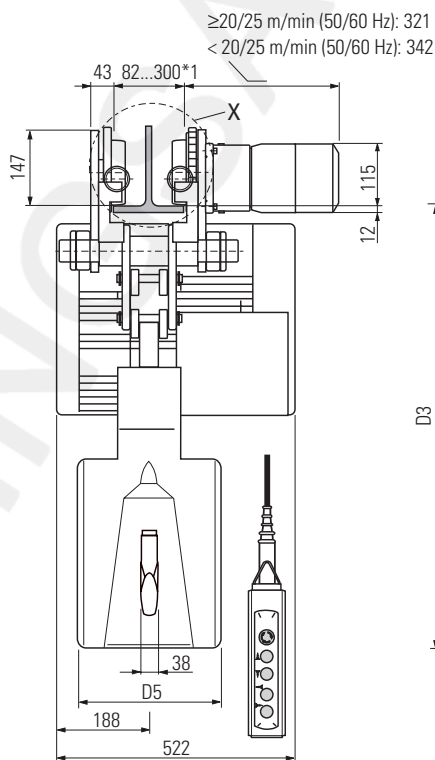
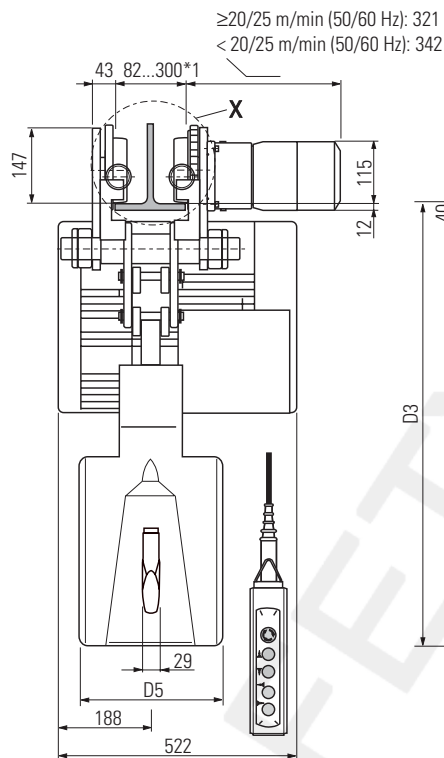
2/1

=2/1	KFK 63.32E		*	
	HW	D3		
[m]	[mm]			
10	891	300	K	Standard
25	1072	300	S	
40	1272	300	S	
6	791	296	T	Option
10	911	296	T	
10	911	300	S	

Auswahltabelle: ↑ 14

Selection table: ↑ 14

Tableau de sélection : ↑ 14



* Material des Kettenspeichers
K = Kunststoff
S = Stahlblech
T = Textil

*1 Standard; bei Flanschbreite > 300 mm sind Führungsrollen erforderlich

*2 Bei geneigtem Flansch

* Material of chain box
K = Plastic
S = Sheet metal
T = Fabric

*1 Standard; guide rollers necessary for flange width >300 mm

*2 With sloping flange

* Matériau du bac à chaîne
K = Matière plastique
S = Tôle d'acier
T = Textile

*1 Standard; galets de guidage nécessaires pour largeur d'aile >300 mm

*2 Avec bride inclinée



ST 50 / ST 60

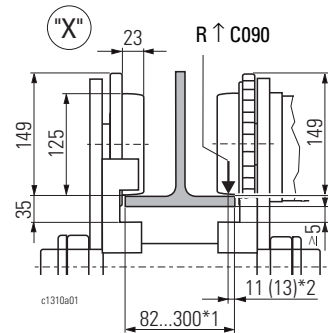
Elektrofahwerk "kurze Bauhöhe"

"Short headroom" electric trolley

Chariot électrique "hauteur perdue réduite"

1/1

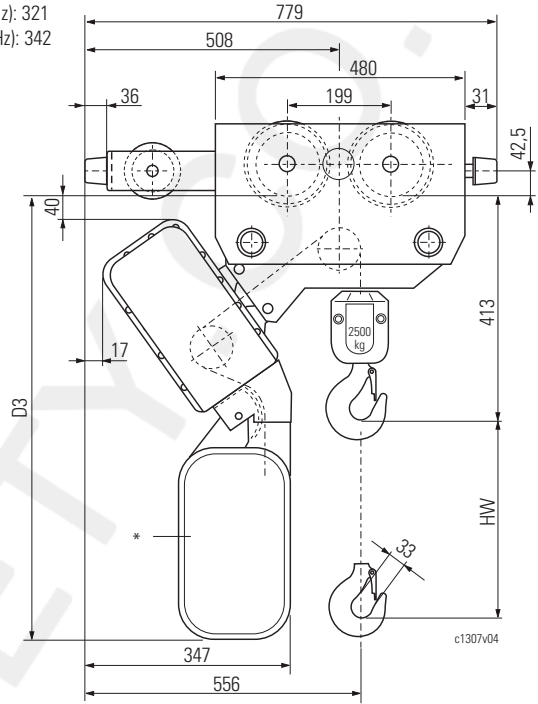
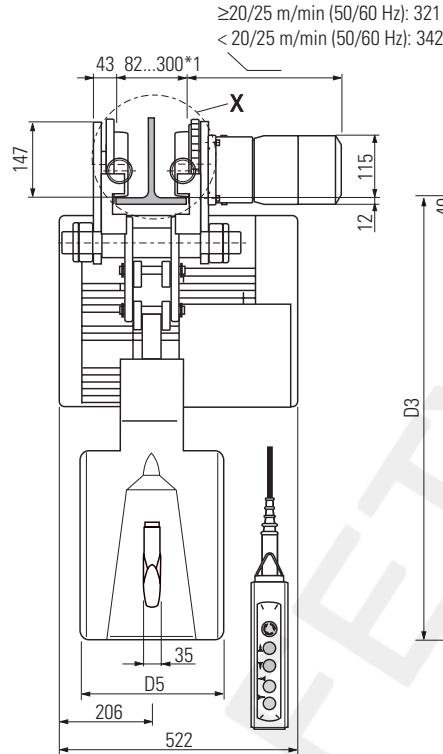
 =1/1	KFK 63.50E KFK 63.60E		*	Standard
	HW	D3	D5	
	[m]	[mm]		
12	877	300	K	Standard
30	1058	300	S	
50	1258	300	S	
8	777	296	T	Option
12	897	296	T	
12	897	300	S	



Auswahltabelle: ↑ 14

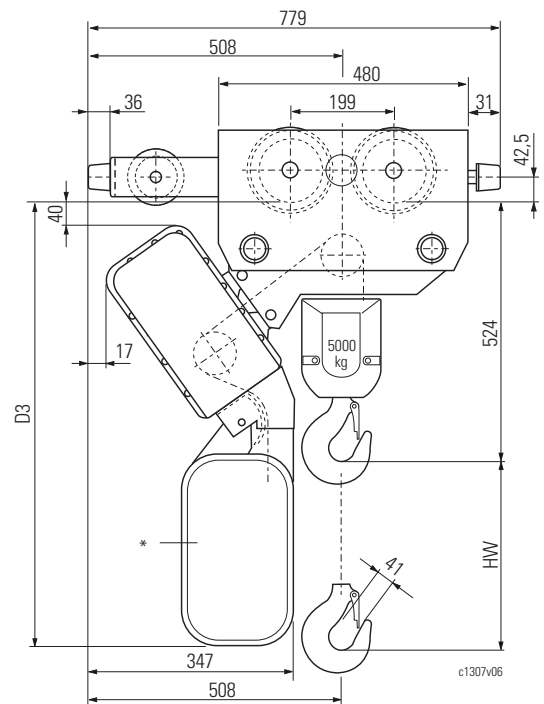
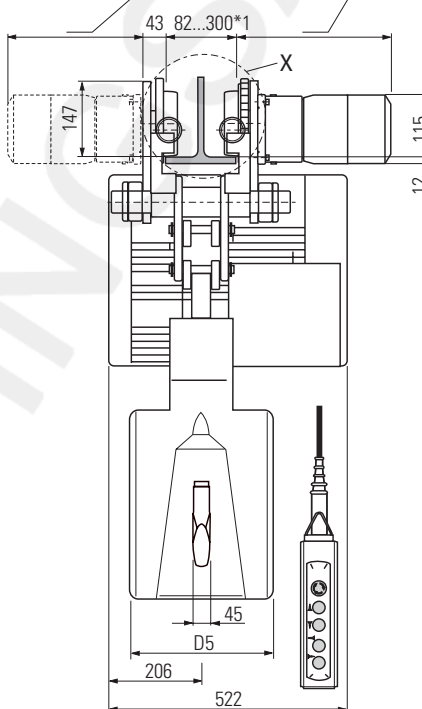
Selection table: ↑ 14

Tableau de sélection : ↑ 14



6300 kg ≥20/25 m/min (50/60 Hz): 2x SU-A ...
5000 kg ≥25/32 m/min (50/60 Hz): 2x SU-A ...

≥20/25 m/min (50/60 Hz): 321
<20/25 m/min (50/60 Hz): 342



2/1

 =2/1	KFK 63.50E KFK 63.60E		*	Standard
	HW	D3	D5	
	[m]	[mm]		
6	877	300	K	Standard
15	1058	300	S	
25	1258	300	S	
4	777	296	T	Option
6	897	296	T	
6	897	300	S	

* Material des Kettenspeichers
K = Kunststoff
S = Stahlblech
T = Textil

*1 Standard; bei Flanschbreite > 300 mm sind Führungsrollen erforderlich
*2 Bei geneigtem Flansch

* Material of chain box
K = Plastic
S = Sheet metal
T = Fabric

*1 Standard; guide rollers necessary for flange width >300 mm
*2 With sloping flange

* Matériau du bac à chaîne
K = Matière plastique
S = Tôle d'acier
T = Textil

*1 Standard; galets de guidage nécessaires pour largeur d'aile >300 mm
*2 Avec bride inclinée