



ISO 9001 REGISTERED

&



**MAN RATED  
CONFINED SPACE  
ENTRY/RETRIEVAL SYSTEMS**  
*Tank Pod System*  
**OPERATOR'S MANUAL**

LIFTINGSAFETY.CO.UK

**LIMITED WARRANTY**

This Limited Warranty is given exclusively to:

\_\_\_\_\_  
Name

\_\_\_\_\_  
Address

\_\_\_\_\_  
Telephone No.

by Unique Concepts Ltd. ("Unique Concepts") in respect of the following product(s) manufactured by it (the "Products"):

\_\_\_\_\_  
\_\_\_\_\_  
\_\_\_\_\_

Subject to the conditions and restrictions contained in this Limited Warranty, Unique Concepts warrants to the Customer that the Products are free from defects in materials and workmanship under normal use and service for a period of twelve (12) months from the date the Products are purchased by the Customer, in new and unused condition, from Unique Concepts or its agent (the "Warranty Period"). Unique Concepts' entire liability and the Customer's exclusive remedy regarding any such defects is limited to the repair or replacement of the defective Products (as Unique Concepts, in its sole discretion, deems appropriate) which are returned to Unique Concepts in accordance with the procedures set forth below.

**Terms and Conditions**

1. This Limited Warranty will be void unless:
  - (a) this Limited Warranty is fully completed by or on behalf of the Customer and returned to Unique Concepts within fourteen (14) days following the date the Customer purchases the Products, by registered mail addressed to: Unique Concepts Ltd., 1500 King Edward Street, Winnipeg, Manitoba, R3H 0R5 (the "Manufacturer's Address");
  - (b) written notice of any defect is delivered to the Manufacturer's Address by registered mail within five (5) days after any defect in the Products becomes apparent; and
  - (c) any defective Products in respect of which the Customer wishes to make a warranty claim are delivered to Unique Concepts, with all postage or freight charges prepaid, within the Warranty Period and no later than fourteen (14) days after any defect in the Products becomes apparent.
  
2. This Limited Warranty shall not apply to any Products which have been used with unapproved assemblies or sub-assemblies, or which have been customized or modified, altered, damaged or misused.
  
3. Following the repair or replacement of any defective Products in respect of which a warranty claim is validly made by the Customer, or, alternatively, following the date Unique Concepts determines either that the warranty given hereby has been voided or that the returned Products do not exhibit any defects in materials or workmanship, Unique Concepts will return the Products to the Customer. All such shipments will be made to the Customer's address listed above, and will be at the Customer's sole expense.

4. The Customer will incur all risk of loss, theft or damage to the Products during shipment to Unique Concepts and during their subsequent return to the Customer. Without limiting the foregoing, the common carrier chosen by Unique Concepts to return the Products to the Customer will be deemed to be an agent of the Customer.

5. If, on its inspection of any Products returned to it by the Customer, Unique Concepts determines that such Products require maintenance or repairs which are outside the scope of its warranty obligations. Unique Concepts may contact the Customer with a view to obtaining authorization (which may be written or oral) to complete such maintenance or repairs at rates then customarily charged by Unique Concepts to its customers. The Customer hereby releases and indemnifies Unique Concepts, together with its directors, officers, agents, employees, successors and assigns, and anyone else who has been involved in the inspection of the Products returned by the Customer, from all claims, losses, expenses and damages (including damages for loss of business profits, business interruption, loss of business information, loss of health or for any other loss whatsoever) arising directly or indirectly, as a result of the failure by Unique Concepts to perform or adequately perform any maintenance or repairs which are outside the scope of its warranty obligations hereunder, whether or not resulting from any negligent or improper inspection of such Products, or from the failure of the Customer to authorize the performance of such maintenance or repairs.

6. THE WARRANTY SET OUT HEREIN IS THE ONLY WARRANTY OF ANY KIND, EITHER EXPRESS OF IMPLIED, STATUTORY OR OTHERWISE (INCLUDING BUT NOT LIMITED TO THE IMPLIED WARRANTIES OR MERCHANTABILITY AND FITNESS FOR A PARTICULAR PURPOSE) THAT IS MADE BY UNIQUE CONCEPTS. WITHOUT LIMITING THE GENERALITY OF THE FOREGOING, UNIQUE CONCEPTS DOES NOT WARRANT THAT THE PRODUCTS WILL MEET ALL REQUIREMENTS OF ALL APPLICABLE LAWS, REGULATIONS OR OTHER ENACTMENTS APPLICABLE IN EACH JURISDICTION IN WHICH THEY MAY BE USED OR STORED, OR THE REQUIREMENTS OF THE CUSTOMER.

7. NO ORAL OR WRITTEN INFORMATION OR ADVICE GIVEN BY UNIQUE CONCEPTS, ITS DEALERS, DIRECTORS, OFFICERS, DISTRIBUTORS, AGENTS OR EMPLOYEES SHALL CREATE A WARRANTY OR IN ANY WAY INCREASE THE SCOPE OF THIS LIMITED WARRANTY, AND THE CUSTOMER MAY NOT RELY ON ANY SUCH INFORMATION OR ADVICE.

8. THE CUSTOMER AGREES THAT, TO THE MAXIMUM EXTENT PERMITTED UNDER APPLICABLE LAW, NEITHER UNIQUE CONCEPTS NOR ITS DEALERS, DIRECTORS, OFFICERS, DISTRIBUTORS, AGENTS OR EMPLOYEES, OR ANYONE ELSE WHO HAS BEEN INVOLVED IN THE CREATION, PRODUCTION OR DELIVERY OF THE PRODUCTS, WILL BE LIABLE FOR ANY DIRECT, INDIRECT, CONSEQUENTIAL OR INCIDENTAL DAMAGES (INCLUDING DAMAGES FOR LOSS OF BUSINESS PROFITS, BUSINESS INTERRUPTION, LOSS OF BUSINESS INFORMATION, LOSS OF HEALTH OR ANY OTHER LOSS WHATSOEVER) ARISING OUT OF THE USE OR INABILITY TO USE SUCH PRODUCT, EVEN IF UNIQUE CONCEPTS HAS BEEN ADVISED OF THE POSSIBILITY OF SUCH DAMAGES.

9. The Customer is not entitled to assign this Limited Warranty to any party. To the maximum extent permitted under applicable law, and at its sole discretion, Unique Concepts is entitled to assign its obligations hereunder to any third party.

10. This Limited Warranty is governed by the laws of the Province of Manitoba and will benefit Unique Concepts and its successors and assigns.

**ACKNOWLEDGEMENT**

THE CUSTOMER ACKNOWLEDGES THAT HE/SHE HAS READ THIS LIMITED WARRANTY, UNDERSTANDS IT, AND AGREES TO BE BOUND BY ITS TERMS AND CONDITIONS. THE CUSTOMER FURTHER AGREES THAT THIS LIMITED WARRANTY CONTAINS THE COMPLETE AND EXCLUSIVE STATEMENT OF AGREEMENT BETWEEN THE PARTIES, AND SUPERSEDES ALL PROPOSALS OR PRIOR AGREEMENTS ORAL AND WRITTEN, AND ANY OTHER COMMUNICATIONS BETWEEN THE PARTIES, RELATING TO THE SUBJECT MATTER OF THIS LIMITED WARRANTY.

\_\_\_\_\_  
Date

\_\_\_\_\_  
Customer

**WARRANTY VOID IF NOT REGISTERED**

LIFTINGSAFETY.CO.UK

## UNIQUE CONCEPTS

### CONFINED SPACE ENTRY/RETRIEVAL TANK POD SYSTEM

#### WARRANTY REGISTRATION FORM & INSPECTION REPORT

##### WARRANTY REGISTRATION (please print)

This form must be filled out by the dealer and signed by both the dealer and the customer at the time of delivery.

Customer's Name _____	Dealer Name _____
Address _____	Address _____
City, State/Province, Code _____	City, State/Province, Code _____
Phone Number ( ____ ) _____	Phone Number ( ____ ) _____
Contact Name _____	Manufactured by: Unique Concepts Ltd. 1500 King Edward Street Winnipeg, Manitoba, Canada R3H 0R5 Phone Number (204) 694-7432 Fax Number (204) 694-7612 Toll Free 1-800-455-9673
Model _____	
Serial Number _____	
Delivery Date _____	

#### DEALER INSPECTION REPORT

#### SAFETY

- |                                                                                                                                                                                                                                                                                                                             |                                                                                                                                          |
|-----------------------------------------------------------------------------------------------------------------------------------------------------------------------------------------------------------------------------------------------------------------------------------------------------------------------------|------------------------------------------------------------------------------------------------------------------------------------------|
| <input type="checkbox"/> All Appropriate Fasteners Torqued<br><input type="checkbox"/> Check that all fasteners and mechanical components are present<br><input type="checkbox"/> Check Winch with Winch Warranty Card<br><input type="checkbox"/> No Mechanical Damage<br><input type="checkbox"/> Check for finish damage | <input type="checkbox"/> All Labels Installed Correctly and Legible<br><input type="checkbox"/> Review Operating and Safety Instructions |
|-----------------------------------------------------------------------------------------------------------------------------------------------------------------------------------------------------------------------------------------------------------------------------------------------------------------------------|------------------------------------------------------------------------------------------------------------------------------------------|

I have thoroughly instructed the buyer on the above described equipment which review included the Operator's Manual content, equipment care, adjustments, safe operation and applicable warranty policy.

Date \_\_\_\_\_ Dealer's Rep. Signature \_\_\_\_\_

The above equipment and Operator's Manual have been received by me and I have been thoroughly instructed as to care, adjustments, safe operation and applicable warranty policy.

Date \_\_\_\_\_ Owner's Signature \_\_\_\_\_

WHITE	YELLOW	PINK
UNIQUE CONCEPTS	DEALER	CUSTOMER

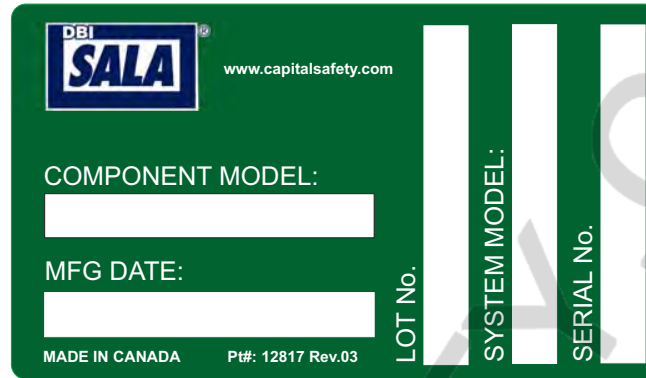
LIFTINGSAFETY.CO.UK



### SERIAL NUMBER LOCATION

Always give your dealer or distributor the serial number of your **UCL Tank Pod System Pt #13700** when ordering parts or requesting service or other information.

The serial number plate is located where indicated. Please mark the number in the space provided for easy reference.



### SERIAL NUMBER LABEL

Model \_\_\_\_\_

Serial Number \_\_\_\_\_



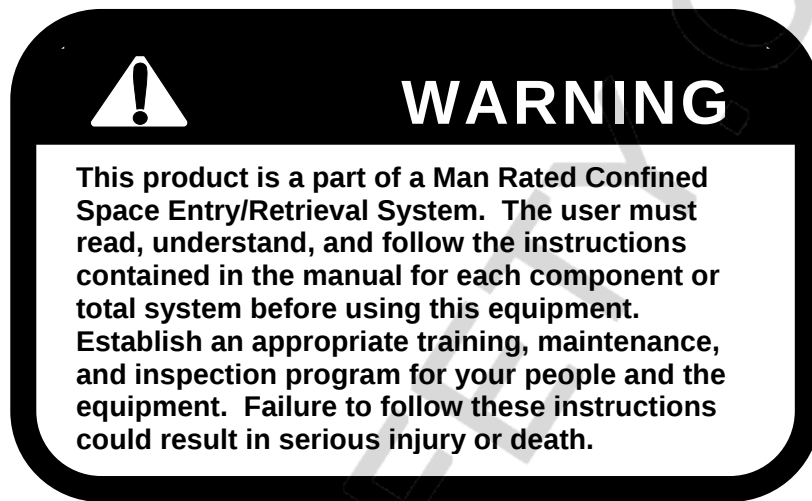
LIFTINGSAFETY.CO.UK

# 1 INTRODUCTION

Congratulations on your choice of a UCL Tank Pod System for your entry/retrieval operation. This equipment has been designed and manufactured to meet the needs of a discriminating operator for the efficient entry/or retrieval of people from a confined space.

Safe, efficient and trouble free operation and maintenance for your component or system requires that you or anyone else who will be operating, maintaining or inspecting the equipment, read, understand and follow all the Safety, Operation, Maintenance and Inspection instructions contained in this manual, and in any related manuals referenced in this manual and/or supplied with the system.

This manual covers the UCL Tank Pod System and Accessories manufactured by Unique Concepts.



Keep this manual handy for frequent reference and to pass to new operators. Establish a regular training program for experienced and new operators per these instructions. Establish a regular maintenance and inspection program to keep the equipment in top condition.

Modular components are labeled with the capacities and rating to which they were designed, tested, and manufactured. The rating of any system is considered to be the rating of the lowest rated component contained in the system.

Do not use the equipment if rating stickers are damaged or illegible. New stickers are available from the manufacturer. When ordering replacement stickers be sure to include:

- 1) The part number from the bottom right hand corner of the sticker, when available.
- 2) The serial number of the unit.
- 3) The part (item) number of the component (consult the appropriate section of this manual).
- 4) Any other numbers stamped on the components.

## 2 SAFETY

### SAFETY ALERT SYMBOL

This Safety Alert symbol means **ATTENTION! BECOME ALERT! YOUR SAFETY IS INVOLVED!**

The Safety Alert symbol identifies important safety messages on your UCL Equipment and in the manual. When you see this symbol, be alert to the possibility of personal injury or death. Follow the instructions in the safety message.



Why is SAFETY important to you?

#### 3 Big Reasons

**Accidents Disable and Kill**  
**Accidents Cost You Money**  
**Accidents Can Be Avoided**

#### SIGNAL WORDS:

Note the use of the signal words **DANGER**, **WARNING**, and **CAUTION** with the safety messages. The appropriate signal word for each message has been selected using the following guide-lines:

**DANGER** - Indicates an imminently hazardous situation that, if not avoided, will result in death or serious injury. This signal word is to be limited to the most extreme situations, or for hidden or unseen hazards.

**WARNING** - Indicates a potentially hazardous situation that if not avoided, could result in death or serious injury, and includes obvious and hidden hazards. It may also be used to alert against unsafe practices.

**CAUTION** - Indicates a potentially hazardous situation that, if not avoided, may result in minor or moderate injury. It may also be used to alert against unsafe practices.

## SAFETY

**YOU** are responsible of the **SAFE** operation, maintenance and inspection of your UCL Tank Pod System. **YOU** must ensure that you and anyone else who is going to operate, maintain, inspect or work around the equipment be familiar with the operating and maintenance procedures and related **SAFETY** information contained in this manual. This manual will take you step-by-step through your working day and alerts you to all good safety and operating practices while using the equipment.

Remember, **YOU** are the key to safety. Good safety practices not only protect you, but also the people around you. Make these practices a working part of your safety program. Be certain that **EVERYONE** operating this equipment is familiar with the procedures recommended and follows safety precautions. Remember, most accidents can be prevented. Do not risk injury or death by ignoring good safety practices.

- Owners must give operating instructions to operators or employees before allowing them to use the equipment, and at least annually thereafter.
- The most important safety device on this equipment is a **SAFE** operator. It is the operator's responsibility to read and understand **ALL** Safety and Operating instructions in the manual and to follow these. All accidents can be avoided.
- A person who has not read, been trained in using and understood all operating and safety instructions is not qualified to operate this equipment. An untrained operator exposes himself and others to possible serious injury or death.
- Do not modify the equipment in any way. Unauthorized modification may impair the function and/or safety and could affect the life of the equipment.
- Think SAFETY! Work SAFELY!

## 2.1 GENERAL SAFETY

1. Read, understand and follow the User Manual and all safety signs before using, maintaining or inspecting the equipment.
2. Refer to and follow applicable ANSI, OSHA, or other Standards and local regulations. Comply with requirements of local regulations for your applications.
3. Establish an equipment-use training program for experienced employees. Only trained, competent persons shall use the equipment. An untrained operator is not qualified to operate the system.
4. Have a first-aid kit available for use should the need arise and know how to use it.
5. Provide a fire extinguisher for use in case of an accident. Store in a highly visible place.
6. Install and properly secure all guards and shields before operating.
7. Wear appropriate protective gear. This list includes but is not limited to:
  - A hard hat
  - Safety glasses
  - Protective shoes with slip resistant soles
  - Heavy gloves
  - Protective clothing
  - Face protection
8. Review and follow the Pre-Operation Inspection before using a component in the system or the system itself.
9. Establish a regular Maintenance and Inspection program with your equipment and maintain detailed records.
10. Review safety related items and operating instructions with all personal on a regular basis.

## 2.2 OPERATING SAFETY

1. Read, understand and follow the User Manual and signs on the equipment before using, maintaining or inspecting the equipment.
2. Train all operators before allowing them to use the equipment. An untrained operator exposes themselves, bystanders and co-workers to possible serious injury or death.
3. Visually inspect the equipment and all auxiliary components and equipment before using. Correct any problems before using the equipment.
4. Securely anchor the winch before using, where applicable.
5. Use only certified anchor and connector components in your system.
6. Use only an approved full body harness for the workers.
7. Always work in teams. One person works in the confined space and the other one pays out the line and reels it in.
8. Do not use the winch when the brake wear indicators display in the red or the counter exceeds 30,000 cycles. Return winch to manufacturer for service. (Refer to the UCL Digital Winch Operators Manual for detailed information on winch operation.)
9. Do not exceed 450lbs. (205 kg) on the line during operation.
10. Establish a regular training program for new and experienced workers.
11. Establish a detailed inspection program for your equipment and document the findings. Return the equipment to the manufacturer for rework if any problems are found.
12. Plan your work program before starting. Have the required people, equipment and procedures available to do the job.

13. Do not use the equipment around physical or environmental hazards. This list includes but is not limited to:
  - a. Corrosion that may affect the structural integrity of the life line or other components .
  - b. Chemicals which can degrade components and not be visible.
  - c. Toxic gases: Rescuers or workers can be killed in toxic environments.
  - d. Heat or elevated temperatures.
  - e. Moving machinery: Workers or auxiliary equipment can be contacted by or pulled into moving components.
  - f. Sharp edges: Workers or the equipment can be injured or damaged by sharp edges or components.
  - g. Electrical hazards: Stay away from power lines or components carrying electrical power.
  - h. Overload: Do not exceed 450 lbs. (205 kg) during operation.
  - i. Follow confined space regulations in Standards.

## 2.3 MAINTAINANCE/INSPECTION SAFETY

1. Read, understand and follow the User Manual and signs on the equipment before using, maintaining or inspecting the equipment.
2. ANSI and OSHA require a regular inspection program for all Confined Space Entry/Retrieval Equipment and to maintain documented results of these inspections. Follow the inspection procedure contained in this manual and use the inspection form to document the results.
3. Keep instructional and safety signs clean and legible at all times. Clean or replace as required.
4. Lubricate winch as per instructions in Section 4 of the UCL Digital Winch Operators Manual.
5. Remove the equipment from service if a problem is found during the inspection. Return to an authorized repair depot or the factory for service.

### 3 OPERATING, NEW OPERATOR OR OWNERS

The UCL Tank Pod System is designed to attach to a person (entrant) and allow them to enter a confined space and assist in exiting if required. Every new operator must read, understand and follow the instructions in all applicable manuals. No one should be allowed to use the equipment without training. The training should be reviewed with experienced operators on a regular basis. At regular intervals perform a detailed inspection of the equipment and document the results. Remove from service if deficiencies are found. Alterations or misuse of this equipment or failure to follow instructions, may result in serious injury or death.

**It is the responsibility of the owner's organization or operator to read this manual and to train all other operators before they start working with the equipment. Follow all safety instructions exactly. Safety is everyone's business. By following recommended procedures, a safe working environment is provided for the operator, bystanders and the area around the work site. Untrained operators are not qualified to operate the equipment.**

Many features incorporated into this equipment are the result of suggestions made by customers like you. Read this manual carefully to learn how to operate the equipment safely and how to set it to perform as intended. By following the operating instructions in conjunction with a good maintenance program, your equipment will provide many years of trouble-free service.



## OPERATING SAFETY

1. Read, understand and follow the User Manual and signs on the equipment before using, maintaining or inspecting the equipment.
2. Train all operators before allowing them to use the equipment. An untrained operator exposes themselves, bystanders and workers to possible serious injury or death.
3. Visually inspect the equipment and all auxiliary components and equipment before using. Correct any problems before using the equipment.
4. Securely anchor the winch before using.
5. Use only certified anchor and connector components in your system.
6. All anchor points, or mounting/setup locations for permanent or portable systems must be approved to local standards by a qualified engineer.
7. Use only an approved body harness for the workers.
8. Always work in teams. One person works in the confined space and the other one pays out the line and reels it in.
9. Do not use the equipment when the winch brake wear indicators display in the red or the counter exceeds 30,000 cycles. Return equipment to manufacturer for service.
10. Do not exceed 450lbs. (205 kg) on the line during operation
11. Use only retractable lifelines or shock absorber with a maximum arrest force (MAF) equal to or lower than the lowest rated component of your system.
12. Establish a regular training program for new and experienced workers.
13. Establish a detailed inspection program for your equipment and document the findings. Return the equipment to the manufacturer for rework if any problems are found.
14. Plan your work program before starting. Have the required people, equipment and procedures available to do the job.
15. Do not use the equipment around physical or environmental hazards. This list includes but is not limited to:
  - a. Corrosion that may affect the structural integrity of the life line or other components .
  - b. Chemicals which can degrade components and not be visible.
  - c. Toxic gases: Rescuers or workers can be killed in toxic environments.
  - d. Heat or elevated temperatures.
  - e. Moving machinery: Workers or auxiliary equipment can be contacted by or pulled into moving components.
  - f. Sharp edges: Workers or the rescue equipment can be injured by or damaged by sharp edges or components.
  - g. Electrical hazards: Stay away from power lines or components carrying electrical power.
  - h. Overload: Do not exceed 450 lbs. (205 kg) during operation.
  - i. Follow confined space regulations in Standards.



### 3.1 WINCH OPERATION

Integral to the UCL Tank Pod System is the UCL Digital Man-Rated Winch. The winch is available in a variety of lifeline capacities, and lifelines are available in a variety of lengths and materials.

Proper operation and maintenance of the winch are critical to the safe usage of your UCL Tank Pod System.

Proper operation and maintenance of the winch are outlined in the "UCL Digital Winch Operator's Manual", UCL Pt. # 11324 supplied with every winch.

LIFTINGSAFETY.CO.UK

## Tank Pod Instructional Manual

### Introduction to the tank pod

The UCL tank pod assembly is designed to be used in areas a conventional tripod or davit system may not set-up due to the configuration of the manway on a tank or overhead obstructions. The most typical applications for the tank pod can be found in food processing, chemical and pharmaceutical processing facilities.

### Different applications covered

First determine what type of means you will be using to secure your tank pod to your hatch. There are 3 main types:

1. Existing hardware used for securing down the hatch cover. (See Page 3)
2. Permanently Installed adjustable weld-on studs (See Page 4)
3. The use of portable stud assemblies on the vertical flange of the tank (See Page 5)

### General Tank Pod Setup

1. You will find two plastic adjustment knobs (A) on the tank pod. These knobs are used to adjust for the diameter of manways ranging from 18" to 35". Equally turn these 2 knobs either inward or outward from the center of the main body tube to match the distance of the securing hardware on the tank. (B)
2. Once the adjustment has been made for your particular diameter, place the main body tube of the tank pod with the anchorage point facing the entry on the back center stud. (C)
3. Secure the other two tank pod legs to the remaining two studs (B) Turn the plastic knobs located at the end of the tank pod legs clockwise to secure to the studs until the studs come tight and flush with a flange surface.
4. Remove all three of your positive locking pins (D) located on the leg tubes and raise the tank pod to the desired height. **Note:** For minimum interference when entering and exiting the hatchway area position the tank pod further back by adjusting the main body tube leg. Replace the pins in the desired hole location. Be sure that the tank pod is sitting as level as possible. One leg can be longer than another to achieve this.

5. Once the desired height is selected and the tank pod secured on top of the hatchway, turn the two adjustment knobs (A) on the main body toward the center section. This will stabilize the unit during use. **Note:** It is not always possible that you will not be able to achieve the desired height when position is a factor as well.
6. To secure the winch-mounting bracket, remove the two 3" pins (H) and one 4" pin (E) from the bracket. Place the bracket over the back leg on the main body and replace the two 3" pins (H) behind the leg. Once secured, replace the 4" pin through an open hole on the leg tube. If no open hole is present, remove the positive lock pin partially back and push the 4" pin (E) through the that same hole. Completely remove the positive lock pin and push the 4" pin (E) completely through.
7. Secure the winch-mounting bracket on the tank pod bracket by removing the two 3/8" pins and placing it over the tank pod bracket and replacing the pin in the available holes.
8. Mount the winch or SRL in accordance to the operator's manual.
9. Remove the top two 3/8" pins (F) on the main body and place your cable over the rollers. Replace your pins to assure the cable does jump the path during use.
10. The anchor point (G) located on a front side of the main body is an approved anchorage point for secondary lifelines such as rope drops and retractables.

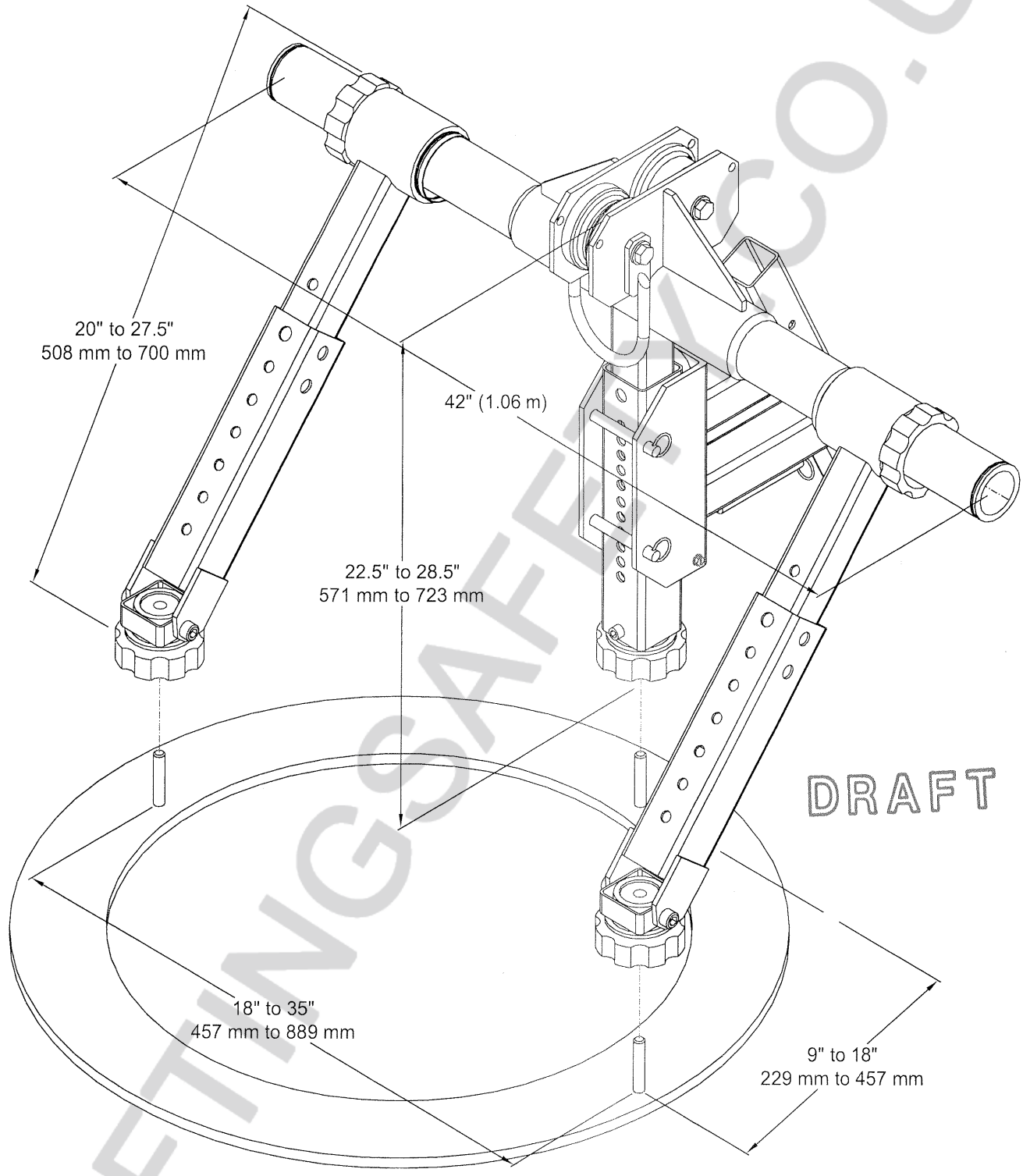


SELBY ENGINEERING AND LIFTING SAFETY LTD. TEL: +44 (0) 1977 684 600



**Tank Pod**  
Model#: 8513700

**SPECIFICATIONS**  
PAGE 2 OF 2

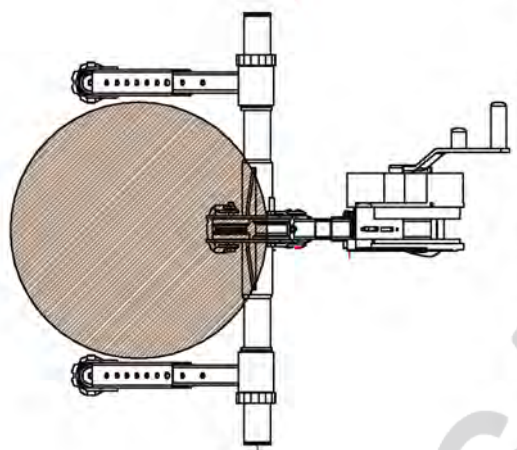
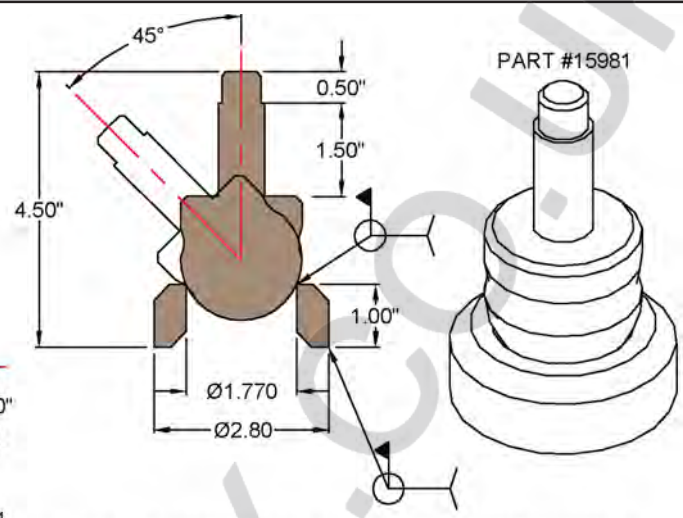
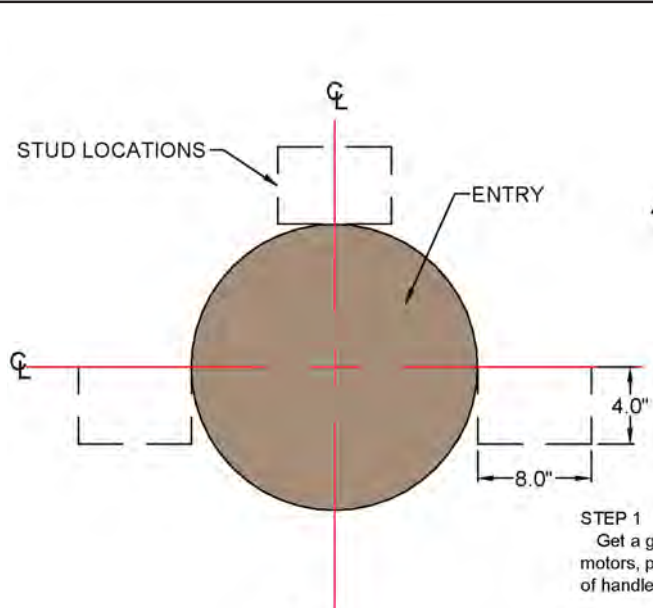


**Capital Safety** USA: 800.328.6146 • Canada: 800.387.7484 • Asia: + 65 6558 7758 •  
 Australia/New Zealand: 800 245 002 • Europe, Middle East, Africa: +33 (0) 497 10 00 10 •  
 Northern Europe: +44 (0) 1928 571324  
[www.capitalsafety.com](http://www.capitalsafety.com) • [info@capitalsafety.com](mailto:info@capitalsafety.com)

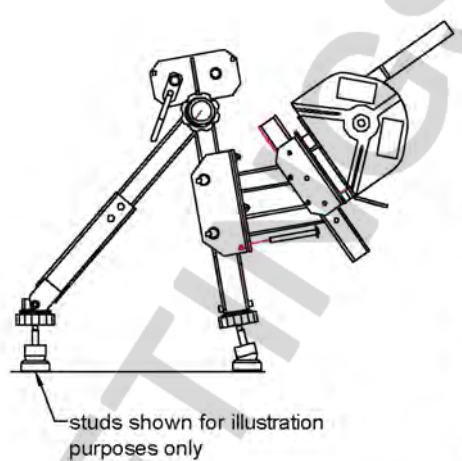
**ISO 9001**  
REGISTERED



## TANK POD INSTALLATION ON ADJUSTABLE WELD-ON STUDS



- STEP 1**  
Get a general idea of where to locate the Tank Pod with minimum interference of piping, motors, pumps etc. Also make sure the digital winch has room for mounting and cranking of handle.
- STEP 2**  
Mount the 3 studs to the tank pod by screwing them into the threaded foot pads at the bottom of each leg. Make sure the studs are screwed into the foot pad fully by coming in contact with the flats of both stud & foot pad.
- STEP 3**  
You will now need assistance to locate the tank pod on the tank tack the stud & mounting ring into place. Things to remember before tacking the studs is as follows  
 a) Keep the legs of the tank pod approximately 4" - 8" away from the entry itself. You can do this by measuring the entry diameter and adding how many inches you may require to mount the tank pod and adjust the outer legs evenly from the center tank pod leg  
 b) The left and right leg studs need to be located across from each other over the center or greater of the hatchway itself.  
 c) Make sure the cable path for the winch enters the hatch entry as close as possible to the back for minimum interference when entering and exiting hatch entry.  
 d) If there is enough interference where the tank pod needs to be positioned off to one side of the entry, the left & right hand side leg heights need to be adjusted accordingly to keep the main body tube in a level position.
- STEP 4**  
Once all these factors have been considered place the stud mounting rings under the stud ball and tack into position.
- STEP 5**  
Before welding up the stud assemblies with a seal welds all around, mount the winch onto the tank pod's winch bracket & examine the clearances during handle rotation.



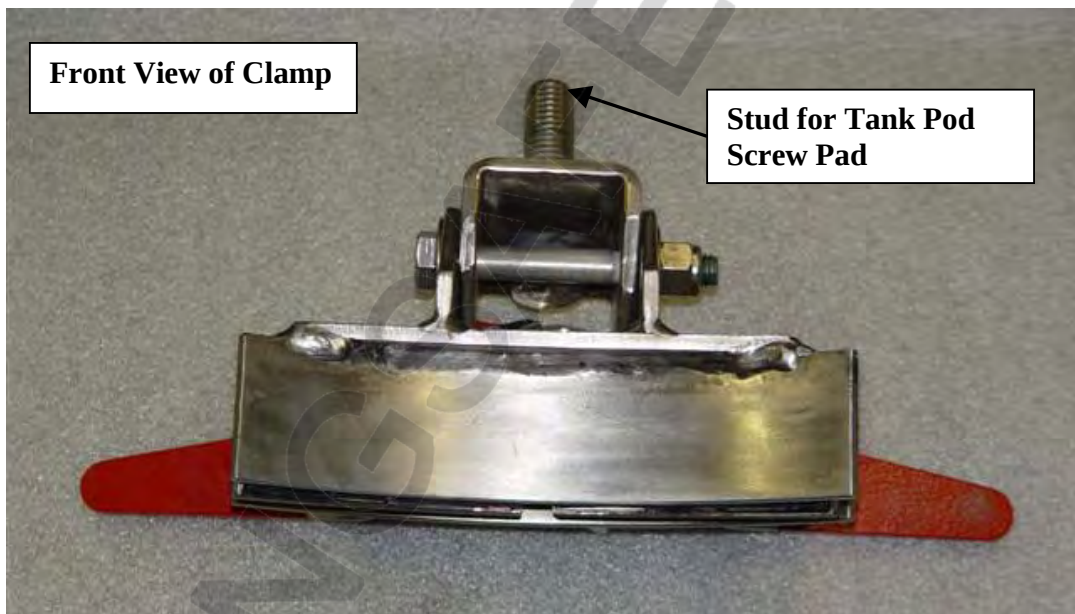
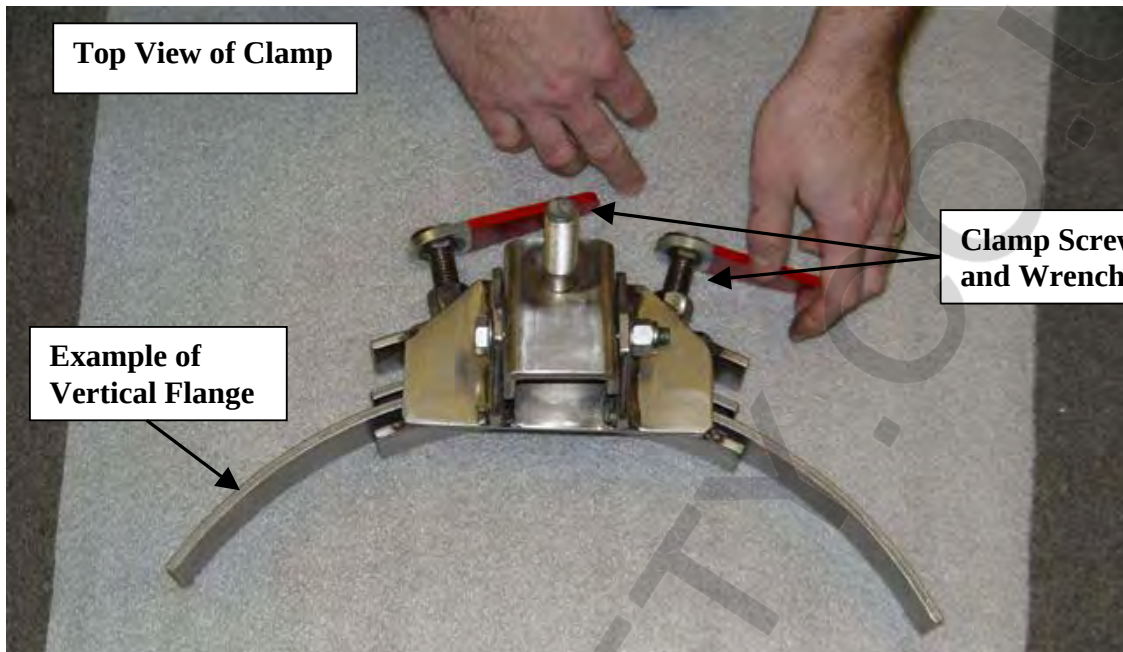
- Installation of the Tank Pod**
- STEP 1**  
Adjust leg width by screwing the leg nut in or out on main body tube. Make sure that the outside legs are evenly spaced from the middle leg on the Tank Pod.
- STEP 2**  
Make sure leg tubes are pinned prior to lifting the Tank Pod into position.
- STEP 3**  
Once lifted into position, remove all 3 pins from leg assemblies for easier mounting to welded on stud assemblies and screw foot pads onto the stud until flats come in contact with each other.
- STEP 4**  
Pin the outside legs first making sure to get maximum height and level as possible. Then pin the center leg into position.
- STEP 5**  
Mount the winch brackets.
- STEP 6**  
Mount the winch accordingly to your operators manual.



**Capital Safety** USA: 800.328.6146 • Canada: 800.387.7484 • Asia: + 65 6558 7758 • Australia/New Zealand: 800 245 002 • Europe, Middle East, Africa: +33 (0) 497 10 00 10 • Northern Europe: +44 (0) 1928 571324  
[www.capitalsafety.com](http://www.capitalsafety.com) • [info@capitalsafety.com](mailto:info@capitalsafety.com)

**ISO 9001**  
REGISTERED

### Portable Tank Pod Stud Clamp



### 3.4 STORAGE

Prior to storage, the UCL Tank Pod System should be thoroughly inspected and maintained. Return for repair or replacement of any worn or damaged components to prevent any unnecessary down time at the next use. Follow this procedure:

1. Thoroughly clean the UCL Tank Pod System using mild soap on the body and labels. Be sure the labels are legible.
2. Use a neutralizing solution to clean lifeline. This is particularly important if the unit had been used in corrosive or toxic environments.
3. Perform a complete inspection of the unit and document the results.
4. Touch up all nicks and scratches to prevent corrosion.
5. Store in a cool dry place.

## 4 MAINTENANCE AND INSPECTION



### MAINTENANCE/INSPECTION SAFETY

1. Read, understand and follow the User Manual and signs on the equipment before using, maintaining or inspecting the equipment.
2. ANSI and OSHA requires a regular inspection program for all Confined Space Entry/Retrieval Equipment and to maintain documented results of these inspections. Follow the inspection procedure contained in this of any other applicable the manual and use the inspection form(s) to document the results.
3. Keep instructional and safety labels clean and legible at all times. Clean or replace as required. See Section 5.1 for label information and part numbers.
4. Lubricate winch as per instructions in Winch Operator's Manual.
5. Remove the equipment from service if a problem is found during the inspection. Return to an authorized repair depot or the factory for service.

### 4.1 Maintenance

#### 4.1.1 Maintenance Intervals

##### Daily

#### 1. Visual Inspection

Perform a complete visual inspection. Refer to Section 4.2.1. Remove from service if a defect is found. Refer to Winch Operator's Manual for visual inspection procedure for the integral UCL winch.

##### Weekly

#### 1. Functional Inspection

Perform a functional inspection. Refer to Section 4.2.2. Record results and keep documentation.

##### Annually

#### 1. Clean Tank Pod System

Use a damp cloth and mild soap to clean the body components and labels of dirt and residue. Be sure labels are legible.

#### 2. Complete Inspection

Perform a complete inspection. Refer to Section 4.2.3. Record results and keep documentation.



## 4.2 INSPECTION

### 4.2.1 Visual Inspection

A complete visual inspection should be performed on the application of Davit System you are using prior to the operation. The following items should be checked; and the results recorded on the "Inspection Log" sheet (see Section 4.3).

#### 1. Labels

Check that all labels are clean and legible. Clean the labels if any are dirty using a mild soap and a damp cloth. Replace if any are illegible (Refer to Section 5 for a listing of all labels).

#### 2. Fasteners

Check that all screws and other fasteners are tight. If any are loose or missing, contact your local dealer or UCL manufacturer. Refer to replacement parts drawings in this manual.

#### 3. Structural Components

Check the components for cracks, dents, bends, or breaks. Minor cosmetic damage in the component body will not affect the function of the davit system. However if there are major dents or any other structural damage, the unit should be removed from service and returned to the manufacturer for service.

#### 4. Corrosion

Check all components for damage from corrosion. Although all components resist corrosion, working in corrosive environments can lead to damage. Inspect all structural components and fasteners for signs of damage. If damage found, remove from service and return to the manufacturer for service.

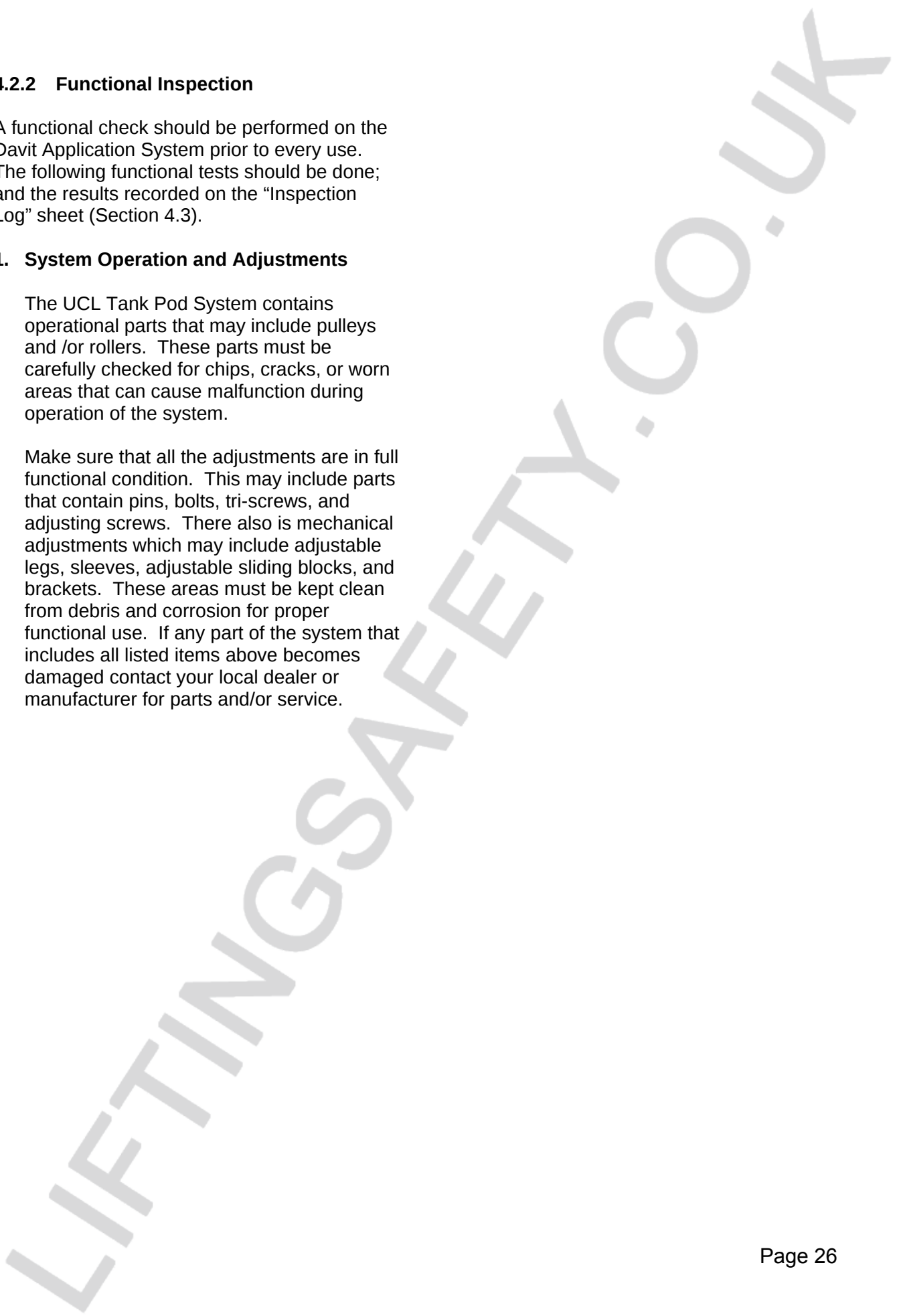
#### **4.2.2 Functional Inspection**

A functional check should be performed on the Davit Application System prior to every use. The following functional tests should be done; and the results recorded on the "Inspection Log" sheet (Section 4.3).

##### **1. System Operation and Adjustments**

The UCL Tank Pod System contains operational parts that may include pulleys and /or rollers. These parts must be carefully checked for chips, cracks, or worn areas that can cause malfunction during operation of the system.

Make sure that all the adjustments are in full functional condition. This may include parts that contain pins, bolts, tri-screws, and adjusting screws. There also is mechanical adjustments which may include adjustable legs, sleeves, adjustable sliding blocks, and brackets. These areas must be kept clean from debris and corrosion for proper functional use. If any part of the system that includes all listed items above becomes damaged contact your local dealer or manufacturer for parts and/or service.



4.3 INSPECTION LOG

Date: \_\_\_\_\_  
 Page \_\_\_\_\_ of \_\_\_\_\_

4.3.1 Tank Pod System Inspection Log

**Sample Form. Copy page to start inspection log record book. Fill out using ball point pen.**

Equipment Identification (Type, Application, Usage & Storage Location)								
Date of Inspection:								
Application of Product:								
Inspector:								
Components (Please write description below)	Serial # if Applicable	Paint & Labels	Fasteners (Secure & Undamaged)	Corrosion & Details	Structural Damage & Details	Corrective Action Taken (if required)	Counter Reading	Sign Off

\* Winch inspection and documentation as per Winch Manual.  
 \* Record Winch serial number.

LIFTINGSAFETY.CO.UK

## 6 SPECIFICATION SHEETS

### 6.1 General

These specification sheets contain information necessary for the proper installation and use of the equipment mentioned in this manual. These specifications contain application specific ratings and mounting requirements determined through design and testing.

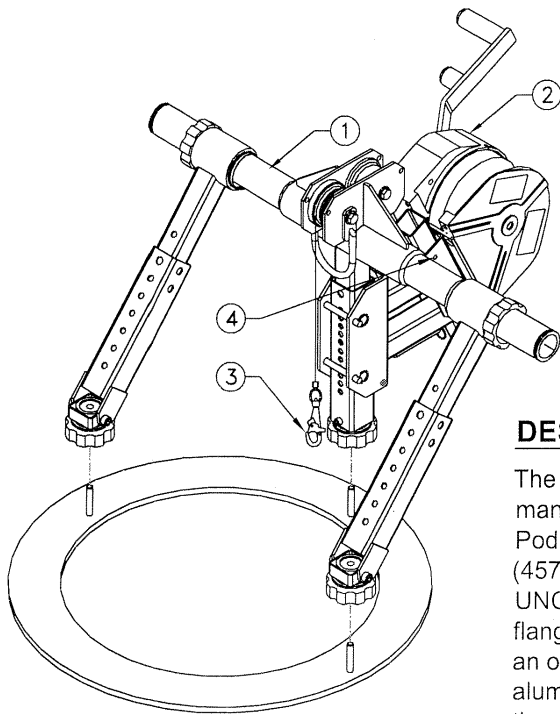
Please read and follow these specification sheets carefully to ensure the proper installation of each item.

LIFTINGSAFETY.CO.UK



**Tank Pod**  
Model#: 8513700

**SPECIFICATIONS**  
**PAGE 1 OF 2**



**Model 8513700 includes the following**

Item	Part #	Qty.	Description
1	<b>8513700</b>	1	Tank Pod
Accessories shown in gray but not included			
2	<b>8511647</b>	1	UCL Digital 100 Winch
3	N/A	1	Cable Assembly
4	<b>8510224</b>	1	Winch Mounting Bracket

**DESCRIPTION:**

The UCL Safety Systems Tank Pod is designed to mount to existing manways with existing hardware for securing hatch covers. The Tank Pod mounts to manway flanges on bolt circle diameters from 18" (457 mm) to 35" (889 mm) using existing 1/2" UNC, 5/8" UNC or 3/4" UNC cover studs. Three independent adjustable legs accommodate flange inclinations to a maximum of 45°, and the unit can be setup in an overhead clearance of only 25" (635 mm). Lightweight anodized aluminum construction with plastic inserts at all bearing points reduce the possibility of vessel contamination, ensures smooth operation and simplifies equipment cleaning. Zinc plated steel hardware resists corrosion. The tank pod can be fitted with a variety of winches, ladder systems and fall-arrest devices to meet any application requirements.

**General specifications:**

Rated Capacity (working load)	450 lbs.(204 Kgs.)
Proof Load	
Mounted Winch	3600 lbs. (1630 Kgs)
Block Anchor Winch Bracket	5000 lbs. (2269 Kgs)
Proof Tests	UCT-159
Weight	38 lbs.(17 Kgs.)

**Materials & Construction:**

General Construction	Welded Aluminum / Steel
Weld Certification	CWB-47.2, CWB-47.1
Material	6061-T6 Alum., HR Mild Steel
Hardware	Gr.5, GR.8 Steel, Zinc pltd.
Finish	Anodized, Zinc Pltd.
Plating Specifications	Type II, Type III Zinc, SC-2 ASTM B633-85
Anodizing Specification	Type II, Class 1 MIL-A-8625-E

**Application Restrictions:**

- Retractable devices or shock absorbers must have a Maximum arrest force (M.A.F.) rating of 1800 lbs.(8 Kn.) or less & **MUST BE** installed and used in accordance with manufactures instructions.
- Flange, tank and supporting structure **MUST BE** capable of supporting:
  - 5000 lbs. (2269 kgs.) vertical load.
  - the minimum fall arrest anchor point load rating for your jurisdiction.
- The Tank Pod is designed for use with accessories manufactured or approved by Unique Concepts Ltd. **ONLY**.
- Mounting hardware and parts **MUST BE** purchased from Unique Concepts Ltd.
- Maximum flange inclination **MUST NOT** exceed 45°.
- Each installation **MUST BE** approved to local standards by a qualified engineer.



**Capital Safety** USA: 800.328.6146 • Canada: 800.387.7484 • Asia: + 65 6558 7758 •  
Australia/New Zealand: 800 245 002 • Europe, Middle East, Africa: +33 (0) 497 10 00 10 •  
Northern Europe: +44 (0) 1928 571324  
[www.capitalsafety.com](http://www.capitalsafety.com) • [info@capitalsafety.com](mailto:info@capitalsafety.com)

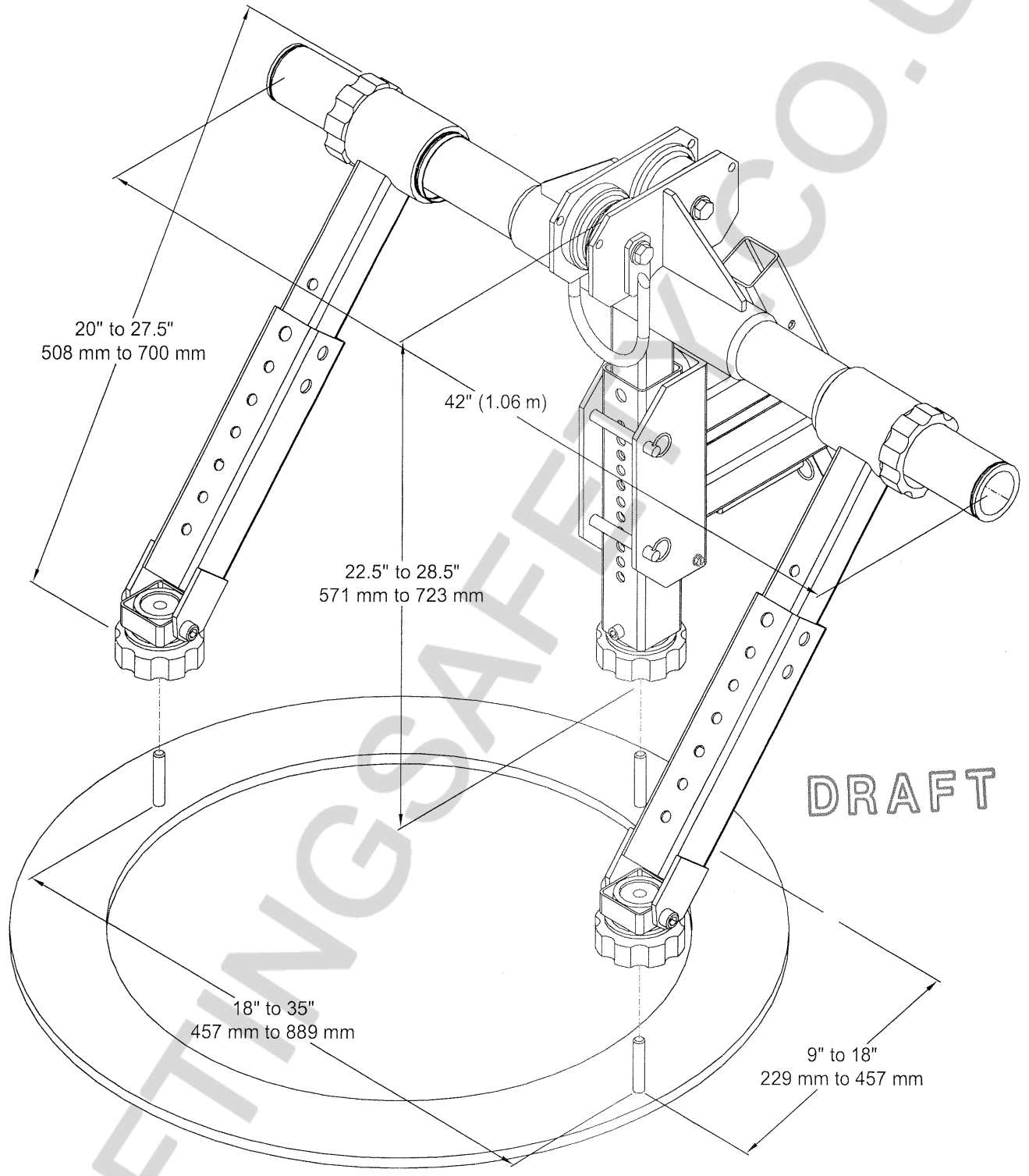
**ISO 9001**  
REGISTERED

SELBY ENGINEERING AND LIFTING SAFETY LTD. TEL: +44 (0) 1977 684 600



**Tank Pod**  
Model#: 8513700

**SPECIFICATIONS**  
PAGE 2 OF 2



**Capital Safety** USA: 800.328.6146 • Canada: 800.387.7484 • Asia: + 65 6558 7758 •  
 Australia/New Zealand: 800 245 002 • Europe, Middle East, Africa: +33 (0) 497 10 00 10 •  
 Northern Europe: +44 (0) 1928 571324  
[www.capitalsafety.com](http://www.capitalsafety.com) • [info@capitalsafety.com](mailto:info@capitalsafety.com)

**ISO 9001**  
REGISTERED

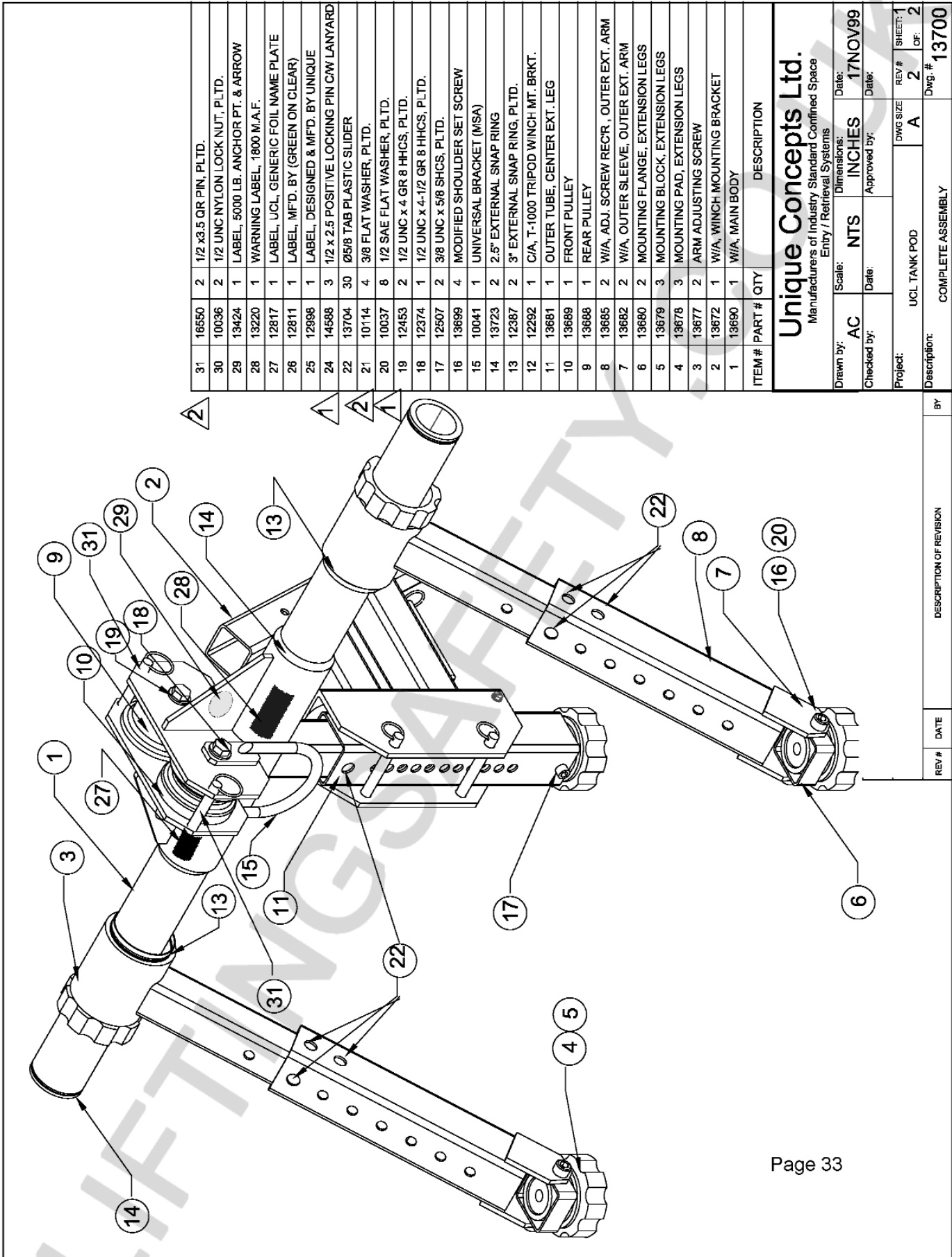
## 7 REPLACEMENT PARTS

### 7.1 General

These drawings are to provide you with an easy reference to order replacement labels and parts when required. Please follow each of the drawings to locate the part numbers required to order from UCL by either referencing the bill of materials on the right hand side of the drawing and then locating the balloon pointing out the replacement part for verification or visa versa.

LIFTINGSAFETY.CO.UK



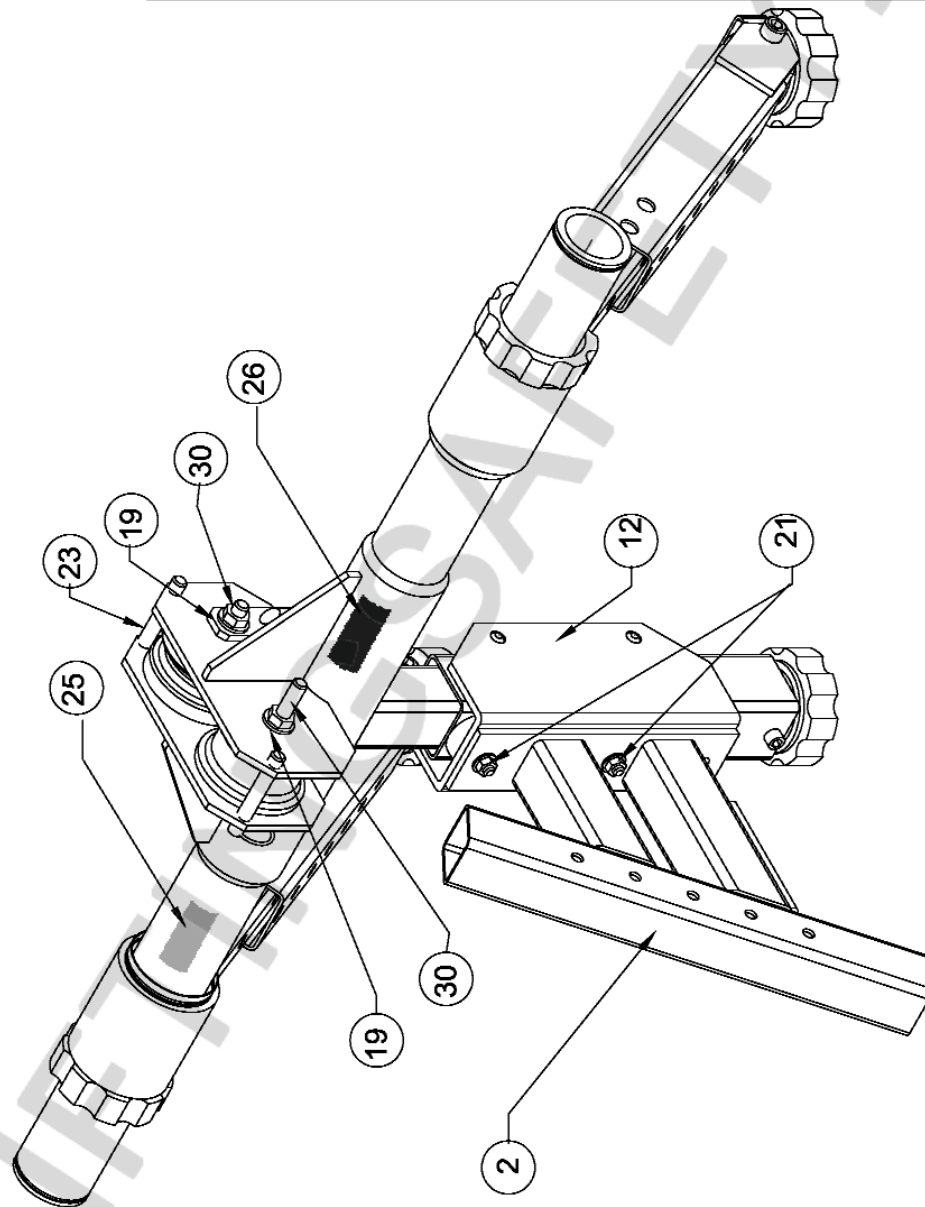


ITEM #	PART #	QTY	DESCRIPTION
31	16550	2	1/2 x3.5 QR PIN, PLTD.
30	10036	2	1/2 UNC NYLON LOCK NUT, PLTD.
29	13424	1	LABEL, 5000 LB. ANCHOR PT. & ARROW
28	13220	1	WARNING LABEL, 1800 M.A.F.
27	12817	1	LABEL, UCL, GENERIC FOIL NAME PLATE
26	12811	1	LABEL, MFD. BY (GREEN ON CLEAR)
25	12998	1	LABEL, DESIGNED & MFD. BY UNIQUE
24	14588	3	1/2 x 2.5 POSITIVE LOCKING PIN CW LANYARD
22	13704	30	Ø5/8 TAB PLASTIC SLIDER
21	10114	4	3/8 FLAT WASHER, PLTD.
20	10037	8	1/2 SAE FLAT WASHER, PLTD.
19	12453	2	1/2 UNC x 4 GR 8 HHCS, PLTD.
18	12374	1	1/2 UNC x 4-1/2 GR 8 HHCS, PLTD.
17	12507	2	3/8 UNC x 5/8 SHCS, PLTD.
16	13699	4	MODIFIED SHOULDER SET SCREW
15	10041	1	UNIVERSAL BRACKET (MSA)
14	13723	2	2.5" EXTERNAL SNAP RING
13	12387	2	3" EXTERNAL SNAP RING, PLTD.
12	12292	1	C/A, T-1000 TRIPOD WINCH MT. BRKT.
11	13681	1	OUTER TUBE, CENTER EXT. LEG
10	13689	1	FRONT PULLEY
9	13688	1	REAR PULLEY
8	13685	2	W/A, ADJ. SCREW REC'R, OUTER EXT. ARM
7	13682	2	W/A, OUTER SLEEVE, OUTER EXT. ARM
6	13680	2	MOUNTING FLANGE, EXTENSION LEGS
5	13679	3	MOUNTING BLOCK, EXTENSION LEGS
4	13678	3	MOUNTING PAD, EXTENSION LEGS
3	13677	2	ARM ADJUSTING SCREW
2	13672	1	W/A, WINCH MOUNTING BRACKET
1	13690	1	W/A, MAIN BODY

**Unique Concepts Ltd.**  
 Manufacturers of Industry Standard Confined Space  
 Entry / Retrieval Systems

Drawn by:	AC	Scale:	NTS	Dimensions:	INCHES	Date:	17NOV99
Checked by:		Date:		Approved by:		Date:	
Project:	UCL TANK POD		DWG SIZE:	A	REV #	2	SHEET: 1
Description:	COMPLETE ASSEMBLY		DWG. #	13700			

REV #	DATE	DESCRIPTION OF REVISION	BY



31	16550	2	1/2 x3.5 QR PIN, PLTD.
30	10036	2	1/2 UNC NYLON LOCK NUT, PLTD.
29	13424	1	LABEL, 5000 LB. ANCHOR PT. & ARROW
28	13220	1	WARNING LABEL, 1800 M.A.F.
27	12817	1	LABEL, UCL, GENERIC FOIL NAME PLATE
26	12811	1	LABEL, MFD. BY (GREEN ON CLEAR)
25	12998	1	LABEL, DESIGNED & MFD. BY UNIQUE
24	14588	3	1/2 x 2.5 POSITIVE LOCKING PIN C/W LANYARD
22	13704	30	Ø5/8 TAB PLASTIC SLIDER
21	10114	4	3/8 FLAT WASHER, PLTD.
20	10037	8	1/2 SAE FLAT WASHER, PLTD.
19	12463	2	1/2 UNC x 4 GR 8 HHCS, PLTD.
18	12374	1	1/2 UNC x 4-1/2 GR 8 HHCS, PLTD.
17	12507	2	3/8 UNC x 5/8 SHCS, PLTD.
16	13699	4	MODIFIED SHOULDER SET SCREW
15	10041	1	UNIVERSAL BRACKET (MSA)
14	13723	2	2.5" EXTERNAL SNAP RING
13	12387	2	3" EXTERNAL SNAP RING, PLTD.
12	12292	1	C/A, T-1000 TRIPOD WINCH MT. BRKT.
11	13681	1	OUTER TUBE, CENTER EXT. LEG
10	13688	1	FRONT PULLEY
9	13688	1	REAR PULLEY
8	13685	2	W/A, ADJ. SCREW RECR, OUTER EXT. ARM
7	13682	2	W/A, OUTER SLEEVE, OUTER EXT. ARM
6	13680	2	MOUNTING FLANGE, EXTENSION LEGS
5	13679	3	MOUNTING BLOCK, EXTENSION LEGS
4	13678	3	MOUNTING PAD, EXTENSION LEGS
3	13672	2	ARM ADJUSTING SCREW
2	13672	1	W/A, WINCH MOUNTING BRACKET
1	13690	1	W/A, MAIN BODY

ITEM #	PART #	QTY	DESCRIPTION
--------	--------	-----	-------------

**Unique Concepts Ltd.**  
 Manufacturers of Industry Standard Confined Space  
 Entry / Retrieval Systems

Drawn by:	AC	Scale:	NTS	Dimensions:	INCHES	Date:	17NOV99
Checked by:		Date:		Approved by:		Date:	
Project:	UCL TANK POD			DWG SIZE:	A	REV #	2
Description:	COMPLETE ASSEMBLY					OF	2
						Dwg. #	13700

REV #	DATE	DESCRIPTION OF REVISION	BY

LIFTINGSAFETY.CO.UK



**Capital Safety** USA: 800.328.6146 • Canada: 800.387.7484 •  
Asia: + 65 6558 7758 • Australia/New Zealand: 800 245 002 •  
Europe, Middle East, Africa: +33 (0) 497 10 00 10 •  
Northern Europe: +44 (0) 1928 571324  
**[www.capitalsafety.com](http://www.capitalsafety.com) • [info@capitalsafety.com](mailto:info@capitalsafety.com)**