



SELBY ENGINEERING & LIFTING SAFETY LTD.

Lifting Equipment and Height Safety Specialists

www.liftingsafety.co.uk Email: sales@liftingsafety.co.uk

Tel: +44 (0) 1977 684 600 Fax: +44 (0) 1977 685 300

Operating instructions for tube mounted enclosed drum safety hoists

MAXIMUM SAFE WORKING LOAD:

Goods Handling: 254KG at a safety factor of 5:1

MAXIMUM HEIGHT OF LIFT:

9 Metres

The equipment must be operated and maintained as specified by the manufacturer. Any modifications, repairs, maintenance or operating practices carried out in any other way than as specified may render invalid warranties and test certification.

1. The Goods Handling Only Hoist **MUST NOT** be used for Man-Riding. (The Transportation or lifting and lowering of people)
2. The Winding Handle Supplied With a Goods Handling Only Hoist is not of the Slipping Clutch type. The Winding Handle supplied is of the Sidelatch type.
3. The Load Hook supplied is not of the type illustrated in the operating instructions. The load hook does not have a cable ferrule retaining clip, the ferrule is retained by a socket grub screw.
4. All the information contained in the operating instructions other than in reference to the Winding Handle, the Load Hook and the Man-Riding capabilities of the hoist, applies to the Goods Handling Only Hoist.
5. To fit the Sidelatch Handle onto either shaft.
 - a) Press the sidelatch in towards the handle boss and push the handle in towards the body of the hoist. Release the sidelatch this will locate in the slot on the shaft.
 - b) Push the spring loaded winding arm in and turn slowly until the Drivebar engages in the slot at the end of the shaft

When the Handle is released the Drivebar will automatically disengage, the Handle will remain located on the shaft by the latch which has to be depressed to allow removal.

Goods Handling Only 508kg and 762kg Hoists

The 508kg and 762kg hoists have double and triple falls of cable respectively. All loads contained in the operating instructions refer to the 254kg hoist, and therefore can be doubled or tripled dependant on hoist model. The maximum operating force remains consistent throughout this range of hoists.

The 254kg, 508kg or 762kg Goods Handling Only Hoist **MUST NOT** be used for the transportation of people.

IMPORTANT PLEASE READ THESE INSTRUCTIONS CAREFULLY BEFORE USING THE EQUIPMENT.

Your MINILIFT hoist could help to save someone's life. It is vital that every person who uses the equipment is adequately trained and understands fully the correct operating procedures.

The equipment is easy to operate and will give years of reliable service if used and maintained properly.

The following guide-lines identify important points that should always be remembered.

ALWAYS

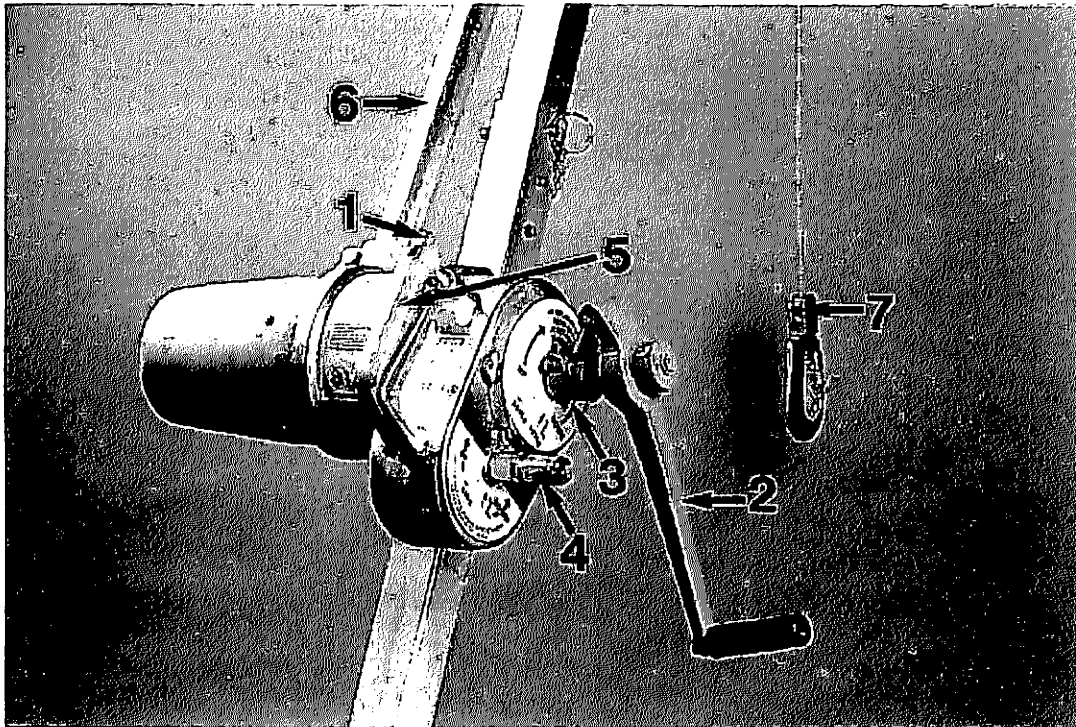
- * Check the Hoist before use. (See section 1.)
- * Be sure that the operator is properly trained and aware of health and safety practices.
- * Fix the Hoist to a suitable anchorage point.
- * Use the correct Winding Handle - Red for personnel - Yellow for goods. (The Hoist is supplied with the Red Handle as standard. The Yellow goods Handle is an optional extra).
- * Use only the upper shaft for lifting people.
- * Fasten the Load Hook to the anchor bracket after use.
- * Clean and dry the equipment before storing.
- * Use the manufacturer or approved service engineers for all repairs and maintenance work.

NEVER

- * Use a Hoist that does not have a current test certificate.
- * Use a Hoist if the cable is damaged.
- * Wind the cable in or out unless a load of at least 6.5kg is suspended from the hook.
- * Attempt to lift loads in excess of the safe working load.
- * Attempt to lift loads of more than one third the safe working load on the lower drive shaft.
- * Release the brake when lifting a load.
- * Lift loads with the cable pulling sideways.
- * Lubricate the winding mechanism or cable, or attempt to adjust the equipment.

KNOW YOUR MINILIFT HOIST

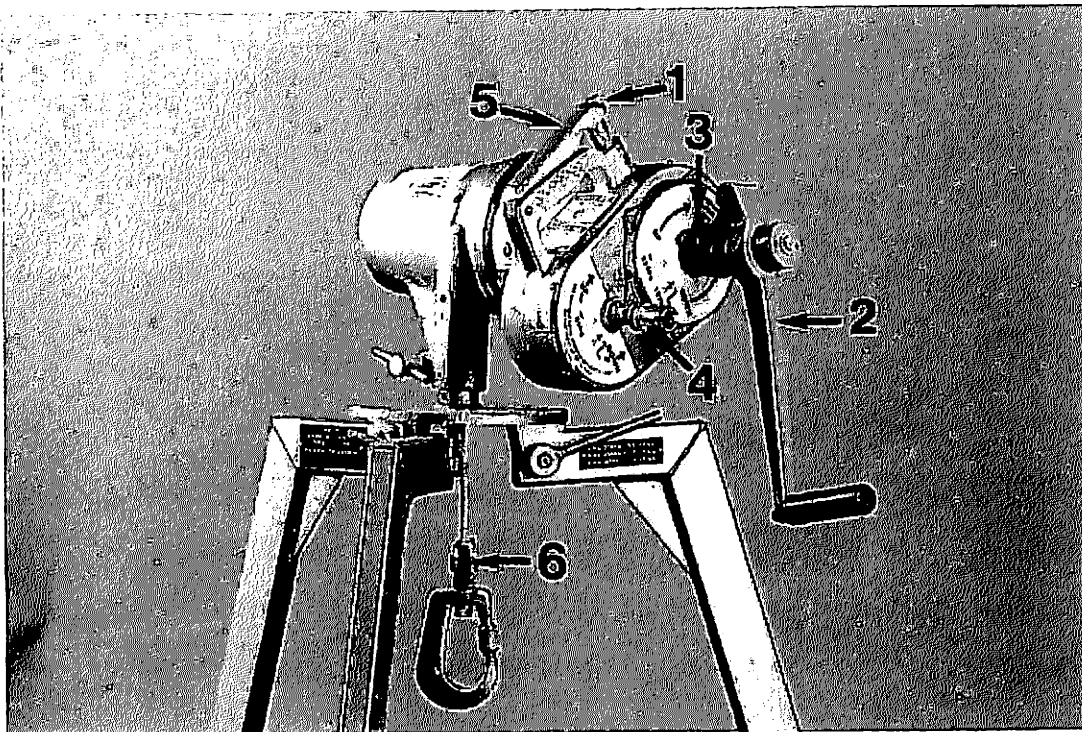
LL/RTZ - Tube Mounted Enclosed Drum Hoist



- 1) Brake Release Safety Latch.
- 2) Slipping Clutch Winding Handle.
- 3) Upper Shaft (For lifting loads up to the maximum safe working load).
- 4) Lower Shaft (For fast cable rewind without a load. Only 1/3 safe working load can be lifted on this shaft).
- 5) Brake release Handgrip.
- 6) Extension Tube.
- 7) Load Hook and Cable Ferrule Retaining Clip.

KNOW YOUR MINILIFT HOIST

LL/RSZ - Spigot Mounted Enclosed Drum Hoist



- 1) Brake Release Safety Latch.
- 2) Slipping Clutch Winding Handle.
- 3) Upper Shaft (For lifting loads up to the maximum safe working load).
- 4) Lower Shaft (For fast cable rewind without a load. Only 1/3 safe working load can be lifted on this shaft).
- 5) Brake release Handgrip.
- 6) Load Hook and Cable Ferrule Retaining Clip.

1. USING THE MINILIFT

Before Use:

Visually check the equipment.

If any part of the equipment is missing or appears to be damaged it must not be used.

If the cable has any kinks, bends or is frayed the equipment must not be used.

Ensure that the cable ferrule retaining clip is secured on the load hook.

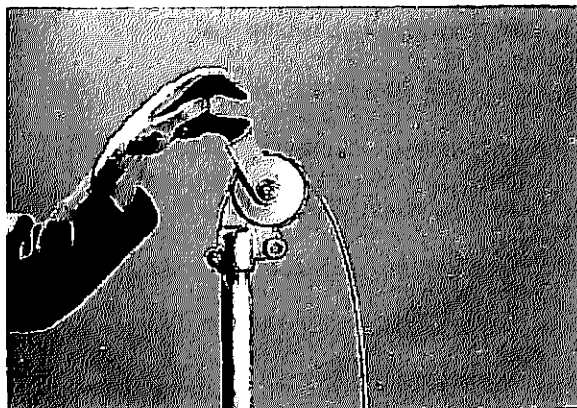
Do not attempt to carry out any repairs. The Hoist is a certified lifting machine and should only be maintained by approved service personnel.

2. MOUNTING THE EQUIPMENT

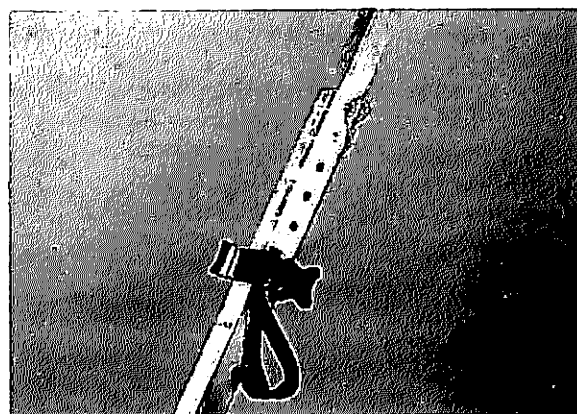
LL/RTZ - Tube Mounted Hoist

Tube mounted Hoists can be suspended from any suitable anchorage point of a compatible safe working load.

Before lifting the Hoist to its anchorage point, pull the top hook backwards towards the brakegrip. This will allow the hook to locate more easily.



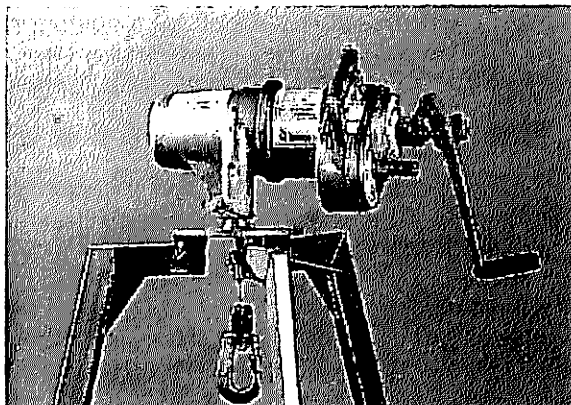
When used on a Tripod the tube mounted enclosed drum Hoist can be attached to a mounting bracket that fixes to one of the legs.



If this is not fitted the Hoist must be manually supported, whilst standing back from the Tripod.

LL/RSZ - Spigot mounted Hoist

Spigot mounted Hoists are for mounting on Didsbury 1.4m Tripods.



3. PREPARING FOR USE

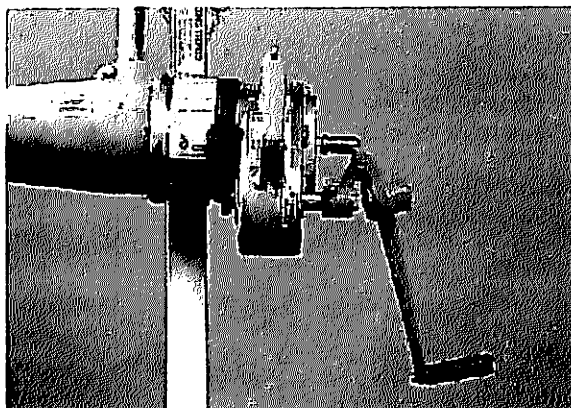
With the Hoist securely fixed in position the cable should be slackened to release the hook from the hook anchorage.

TO FIT THE WINDING HANDLE ONTO EITHER SHAFT;

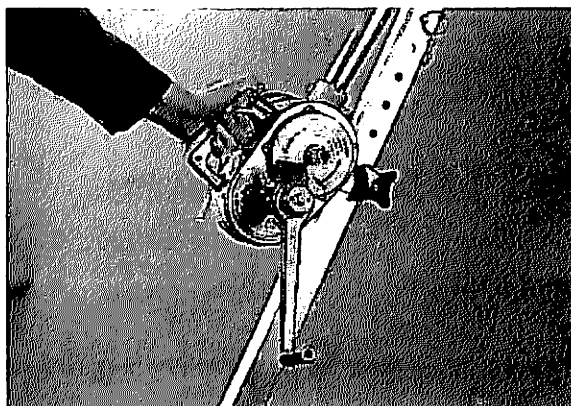
Push the handle in towards the body of the Hoist until the latch locates in the slot on the shaft.

Push the spring loaded winding arm in and turn slowly until the drivebar engages in the slots at the end of the shaft.

When the handle is released the drivebar will automatically disengage. The handle will remain located on the shaft by the latch. The latch has to be depressed to remove the handle.

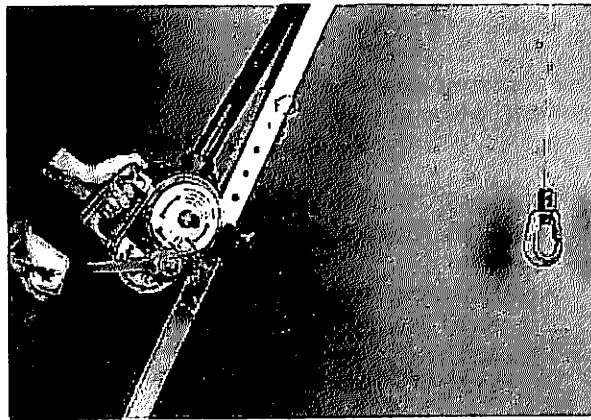


Fit the handle to the lower shaft. Release the brake by sliding the safety latch backwards with the thumb and squeezing the brakegrip.



Wind out enough cable to attach the hook to the safety harness or load.

With the handle still fitted to the lower shaft wind the cable in to take up any slack.



REMEMBER: THE RED HANDLE MUST BE USED FOR MAN-RIDING. THE YELLOW HANDLE (IF SUPPLIED) IS ONLY FOR GOODS HANDLING.

The appropriate winding handle should now be fitted to the upper shaft. The hoist is now ready for lowering and lifting operations.

4. **LIFTING A LOAD**

Fit the handle to the upper shaft and wind in a clockwise direction.

You will hear a clicking noise. This is the Ratchet Mechanism winding through the brake device which holds the load when the handle is released.

REMEMBER: NEVER RELEASE THE BRAKE WHEN LIFTING LOADS. THIS WOULD CAUSE THE FORCE OF THE LOAD TO BE PLACED ON THE HANDLE.

5. **LOWERING A LOAD**

Governor Controlled Lowering

Remove the winding handle. Release the brake by sliding the safety latch backwards with the thumb and squeezing the brakegrip. The load will descend at a controlled rate (approx 0.5 metres per second) which can be slowed or stopped by taking pressure off or releasing the brakegrip.

REMEMBER: ALWAYS REMOVE THE WINDING HANDLE BEFORE GOVERNED LOWERING. IF LEFT IN POSITION IT COULD ROTATE AT SPEED AND CAUSE SERIOUS INJURY.

Manually Controlled Precision Lowering

For precise positioning of the load the cable can be wound out. Prepare to take the strain on the winding handle which should be held in the right hand. Release the brake by sliding the safety latch backwards and squeezing the brakegrip.

The handle can now be wound counter-clockwise to lower the load. Stop winding and release the brakegrip to hold the load.

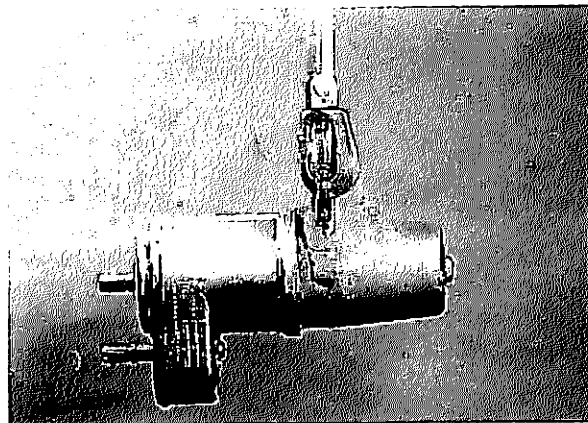
When lowering personnel or goods into a confined space it is best to suspend the load over the opening to check the entry position before operating the hoist.



6. AFTER USE

The load hook should be replaced on the hook anchorage to keep the cable safely stowed.

Wipe away any dirt or moisture before the hoist is returned into storage.



REMEMBER: NEVER LEAVE THE HOIST OUTSIDE OR IN CORROSIVE CONDITIONS WHEN IT IS NOT IN USE.

7. **MAINTENANCE**

MINILIFT Hoists should only be serviced by the manufacturer or by approved engineers.

The manufacturer recommends that the equipment is serviced, tested and recertified annually by an approved organisation.

REMEMBER: ANY ADJUSTMENTS OR MAINTENANCE CARRIED OUT BY AN UNAPPROVED ORGANISATION WILL INVALIDATE THE TEST CERTIFICATION AND COULD ENDANGER LIFE.

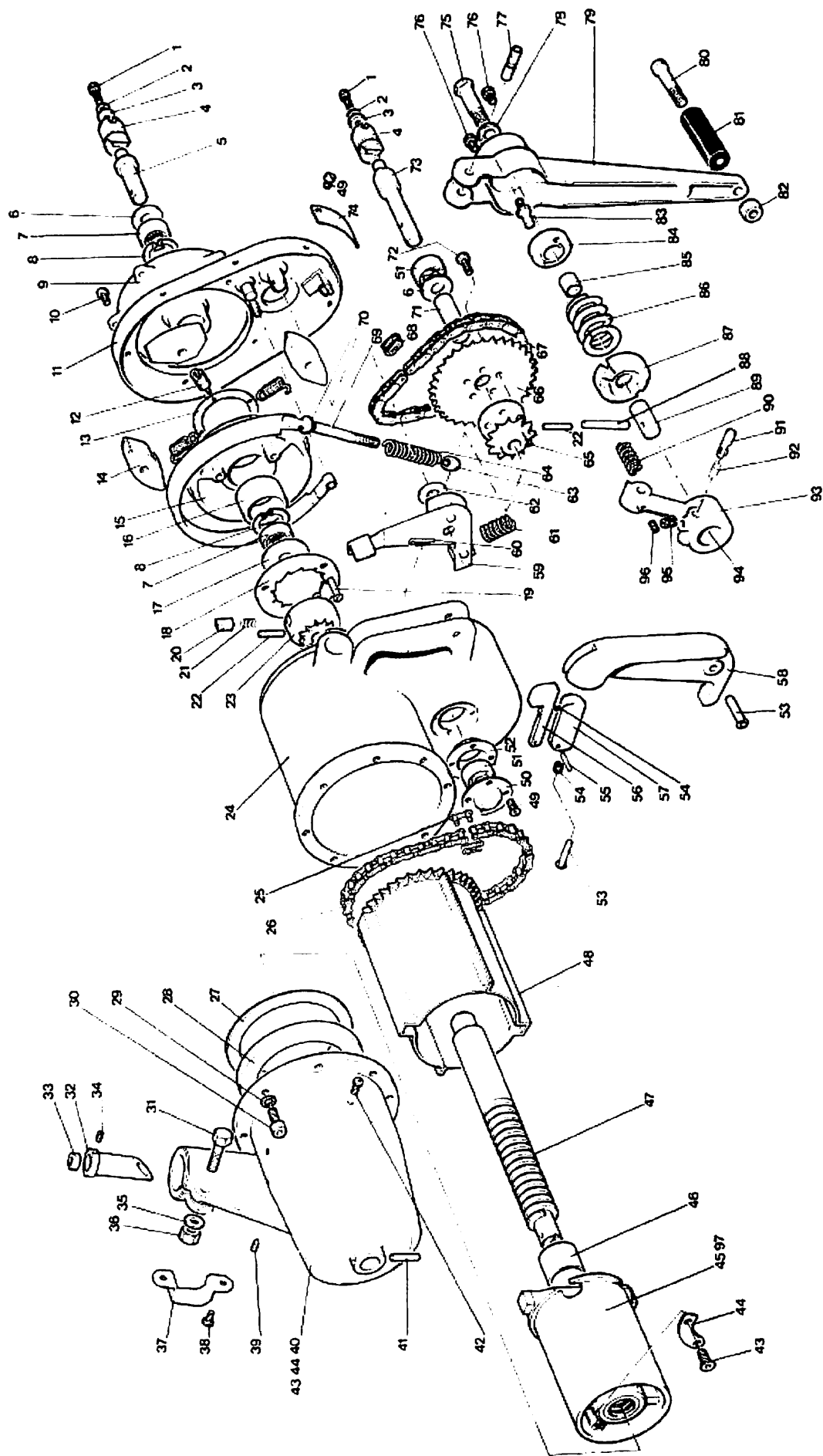
Didsbury Engineering Company Limited
Lower Meadow Rd. Brooke Park
Handforth, Cheshire, SK9 3LP
tel: 0161 486 2200, fax: 0161 486 2211
email: sales@didsbury.com

WINDING MECHANISM/SERVO BRAKE LL/RTZ

Item No.	Part No.	Nomenclature	Quantity
1	3107	Socket Cap Screw Wedgeok 2 BA x 1/2" Long	2
2	2232	Washer Shakeproof 2 BA	2
3	41/370	Washer	2
4	41/46	Driving Dog	2
5	46/883	Drive Shaft	1
6	48/79	Washer 1 1/2" od	2
7	209/16	Ball Bearing EE4 1/2" x 1 1/8" x 1/2"	2
8	269/5	Crktp Internal 1300 1 1/2"	2
9	46/237	Governor Cover	2
10	234/7	Shakeproof Binder Hd Screw 4 BA x 1/2" Long Type 23	1
11	46/1047	Front Cover Assembly	5
12	41/131	Governor Spring	1
13	46/224	Governor Spring Anchor	6
14	46/75	Governor Shoe	1
15	46/60	Brake Drum	6
16	250/27	Glacier Bush WB 2416 (4808)	1
17	46/78	Washer 1 1/2" od	1
18	46/55	Ratchet Wheel	1
19	262/8	Pop Rivet TLP/K 675 BH 3/8" x 3/4" Long	1
20	46/64	Pawl	3
21	46/68	Panel Spring	2
22	507/8	Pin Grooved 3/4" x 7/8" Long	2
23	46/356	Pawl Carrier with 11T Chainwheel	2
24	68/10	Body Casting	1
25	275/5	1/2" Pitch Chain Coupling	1
26	272/8	1/2" Pitch Roller Chain 36 Pitches	1
27	68/112	Cover Plate	1
28	68/113	Take Off Ring	1
29	160/1	Shakeproof Washer (INT) 3/4"	8
30	213/7	Socket Hd Cap Screw 3/4" BSF x 3/4" Long	8
31	104/11	Hd Hd Bolt 3/4" BSF x 2" Long	1
32	68/114	Cable Sleeve	1
33	41/22	Cable Stop	1
34	405/1	Socket Set Screw 4BA x 3/4" Long	1
35	159/3	Washer 3/4"	1
36	137/2	Hd Hd Nut 3/4" BSF	1
37	46/131	Hook Anchorage	1
38	281/8	Blinder Hd Screw 10 - 16 x 3/4" Long Type 25	2
39	373/5	Socket Set Screw 3/4" BSF x 1/2" Long Wedgeok Grub	1
40	68/4	Rear Cover	1
41	264/11	Parallel Pin 3/4" x 1 1/2" Long	1
42	352/3	Socket Button Hd Screw 2 BA x 3/4" Long	4
43	342/7	C/rk Socket Hd Screw 2 BA x 3/4" Long	4
44	68/13	Over Lower Stop	2
45	68/2	Cable Drum	1
46	250/31	Glacier Bush L2016	1
47	68/5	Drum Shaft	1
48	68/12	Sleeve Assembly	1
49	280/3	Blinder Hd Screw 6-20 x 3/4" Long Type 25	9
50	46/64	Bearing Cap	1
51	209/16	Bearing EE4 1/2" x 1 1/8" x 1/2"	2
52	46/63	Bearing Housing	1
53	210/47	Rd Hd Rivet 3/4" x 1 1/8" Long	2
54	212/2	Spring Entex No. 5	2
55	263/7	Parallel Pin 3/4" x 3/4" Long	1
56	46/369	Brake Latch	1
57	46/368	Brake Release Bl/dton	1
58	46/574	Brake Grip	1
59	46/828	Brake Lever Assembly	1

Item No.	Part No.	Nomenclature	Quantity
60	165/4	Split Pin 3/4" x 1/2" Long	1
61	212/19	Spring Entex No. 88	1
62	158/3	Washer 3/4"	1
63	229/2	Nyloc Nut 2 BA	1
64	212/14	Spring Entex No. 41	1
65	46/819	Counter Shaft Boss with 11T Chainwheel	1
66	46/73	Chainwheel 35T	1
67	272/4	1/4" Pitch Roller Chain 44 Pitches	1
68	275/3	3/4" Pitch Roller Chain Coupling	1
69	46/1043	Brake Band	1
70	222/2	Washer 2BA	1
71	46/132	Spacer Tube	1
72	289/5	Hd Hd Self Tapping Screw 2 BA x 1/2" Long	5
73	46/894	Counter Shaft	1
74	46/1059	Brake Adj. Label	1
75	41/89	Shoulder Screw	1
76	310/3	Socket Hd Cap Screw (Wedgeok)	2
	310/4	2BA x 1/2" Long (127 Kg SWL)	
77	41/86	2BA x 3/4" Long (254 Kg SWL)	1
	785/1	Bearing Pin	
78	41/81	Washer	1
79	41/84	Winding Handle	1
80	41/85	Handgrip Screw	1
81	149/2	Handgrip	1
82	41/83	Locknut 3/4" - 16 UNC	1
83	68/109	Guide Pin	2
84	41/157	Adjusting Ring	1
85	41/88	Sleeve	1
86	41/87	Clutch Spring	1
87	41/81	Clutch Plate	1
88	41/80	Driving Pin	1
89	41/82	Driving Pin Stem	1
90	41/82	Crank Spring	1
91	41/160	Latch	1
92	41/162	Latch Spring	1
93	41/159	Crank Arm	1
94	250/10	Glacier Bush 3008	1
95	41/161	Retaining Screw	1
96	300/1	Socket Grub Screw 2BA x 1/2" Long	1
97	334/5	Phillips Screw Self Tapping 4BA x 1/2" Long (Not Shown)	1

WINDING MECHANISM/SERVO BRAKE LL/RTZ



TOP SHEATH/TUBE/LOAD HOOK ASSEMBLY

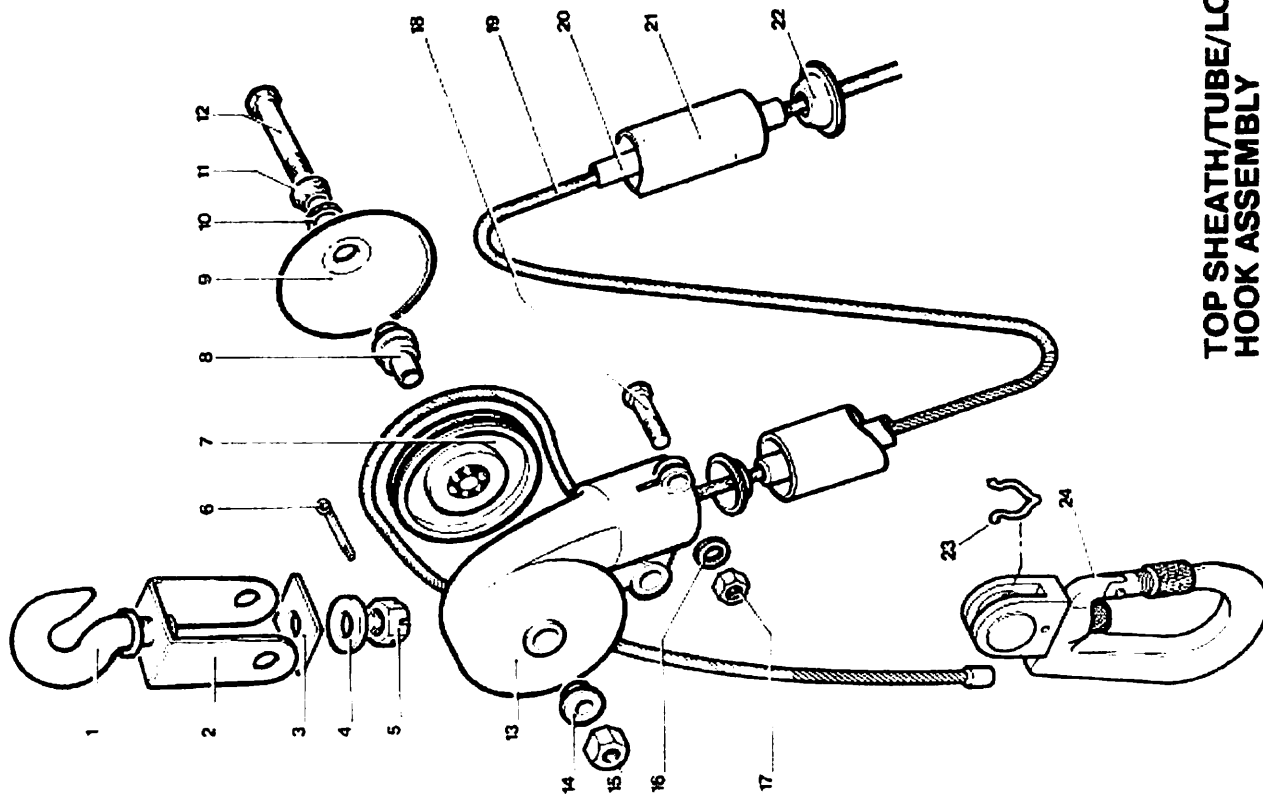
Quantity

Part No.

Item No.

1	48/87	Hook	1
2	48/1008	Hook (with Safety Latch)	1
3	48/84	Strap	1
4	48/83	Hook Washer	1
5	159/7	Washer 1/4" I/d	1
6	141/4	Split Nut 1/4" BSF	1
7	169/8	Split Pin 1/4" x 1 1/2" Long	1
8	48/1115	Pulley Assembly	1
9	48/538	Pulley Bush	1
10	48/70	Pulley Cover	1
11	48/537	Thackray Washer 1/4" I/d	1
12	48/538	Shoulder Strap Bush	1
13	104/13	Hx Hd Bolt 1/4" BSF x 2 1/2" Long	1
14	48/310/T1	Top Sheath	1
15	48/82	Strap Bush	1
16	137/2	Hx Hd Nut 1/4" BSF	1
17	159/3	Washer 1/4"	1
18	137/2	Hx Hd Nut 1/4" BSF	1
19	104/9	Hx Hd Bolt 1/4" BSF x 1 1/2" Long	1
20	48/317/T2	Cable (35'-0" Long)	1
21	48/105	Inner Tube	1
22	48/104	Outer Tube	1
23	48/143	Inner Tube Washer	2
24	88/100	Cap for Cable	1
	88/101	Safety Hook (SWL 254 kg)	1

Standard 4'0" Length



TOP SHEATH/TUBE/LOAD
HOOK ASSEMBLY