

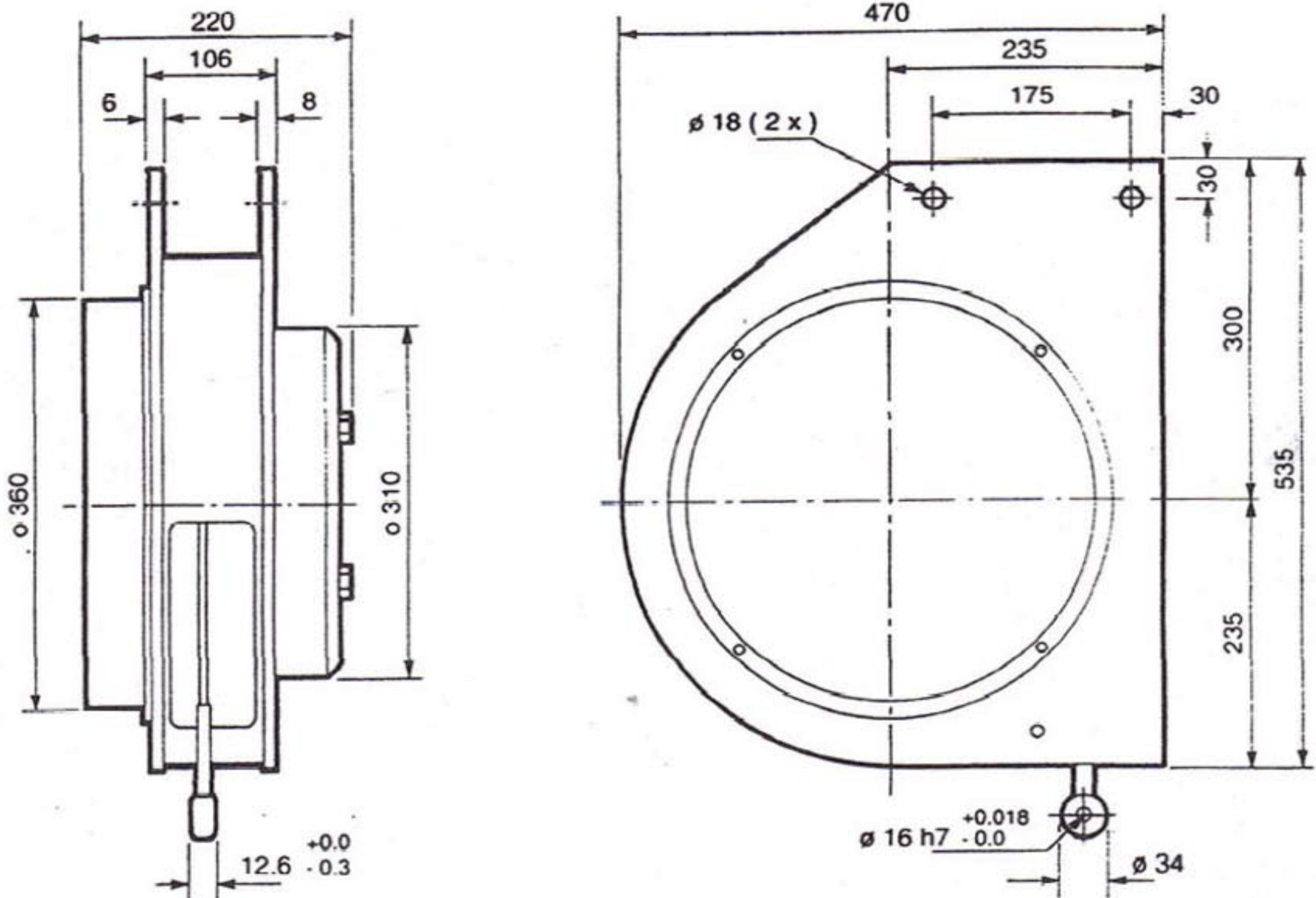
LARGE SERIES LOAD ARRESTORS

SELBY SELBY ENGINEERING & LIFTING SAFETY LTD.
 Lifting Equipment and Height Safety Specialists
 www.liftingsafety.co.uk sales@liftingsafety.co.uk
 Tel: +44 (0) 1977 684 600 Fax: +44 (0) 1977 685 300

Main Features of Large Series

- Shock absorbing system.
- Inertia activated brake mechanism.
- Self-retracting wire rope.
- Brake indicator button.
- Rugged steel construction.

The large range of load arrestors is intended for permanent installation only. They protect loads from 500kg to 3000kg. The leading particulars of each of the arrestors in this range are listed below.



Leading Particulars

Type	Max Load (kg)	Working Length (m)	Rope Dia. (mm)	Rope M.B.S. (kN)	Lock-on Speed (m/sec)	Max Stopping Distance (mm)	Weight (kg)
1000-30	1000	30	9	48.0	0.5	800	105
2000-15P	2000	15	9	48.0	0.5	500	105
1300-20	1300	20	10	59.0	0.5	800	105
2600-10P	2600	10	10	59.0	0.5	500	105
1500-15	1500	15	11	71.0	0.5	1000	105
3000-7.5P	3000	7.5	11	71.0	0.5	700	105