

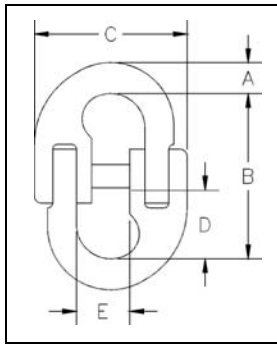
Crosby® Connecting Links



A-336



- Forged Alloy Steel - Quenched and Tempered.
- Individually Proof Tested at 2-1/2 times the Working Load Limit with certification.
- Easy to assemble - see instructions on page 246.



LOK-A-LOY® 6 Connecting Link

Chain Size (in.)	A-336 Stock No.	Working Load Limit (lbs.)*	Weight Each (lbs.)	Dimensions (in.)					Diameter of Hole to Accept Link
				A	B	C	D	E	
1/4	1014397	3250	.24	.31	2.06	1.69	.78	.78	.50
3/8	1014413	6600	.58	.45	2.72	2.31	1.06	1.09	.66
1/2	1014431	11300	1.20	.58	3.34	3.16	1.28	1.41	.88
5/8	1014459	16500	2.42	.78	3.91	3.94	1.56	1.69	1.06
3/4	1014477	23000	3.89	.89	4.84	4.44	1.97	2.00	1.19
7/8	1014495	28750	6.08	1.00	5.81	5.31	2.38	2.12	1.38
1	1014510	38750	7.03	1.08	6.48	6.07	2.84	2.55	1.47
1-1/4	1014538	57500	13.20	1.38	8.48	7.65	3.77	3.77	1.73

* Ultimate Load is 4 times the Working Load Limit.

The WLL of the A-336 are less than Grade 80 chain ratings. When using in Grade 80 chain slings, ANSI B30.9c requires that the Working Load Limit of a sling must not exceed the lowest Working Load Limit of the components in the system.