

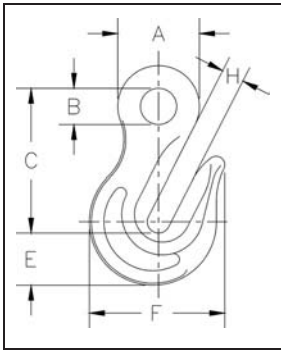
# Grade 80 Alloy Fittings



## A-328



- Alloy Steel - Quenched and Tempered.
- Individually Proof Tested at 2-1/2 times the Working Load Limit with certification.
- The use of A-328 Eye Grab Hook will result in a 20 percent reduction in chain capacity. When used to hook back to chain leg to form a choker, the angle of the choke must be 120 degrees or greater. When used as a chain shortener, minimize twist of chain and ensure chain is fully engaged in hook.



### A-328 Eye Grab Hook

Chain Size (in.)	A-328 Stock No.	Working Load Limit (lbs.)*	Weight Each (lbs.)	Dimensions (in.)					
				A	B	C	E	F	H
9/32 (1/4)	1026017	3500	.60	1.38	.59	2.56	.91	2.16	.38
3/8	1026035	7100	1.20	1.80	.80	3.25	1.16	3.00	.50
1/2	1026053	12000	3.00	2.25	.98	4.19	1.69	4.00	.63
3/4	1026099	28300	8.25	3.22	1.36	5.95	2.19	5.47	.88
7/8	1026115	34200	11.90	3.70	1.55	6.88	2.56	6.31	1.06

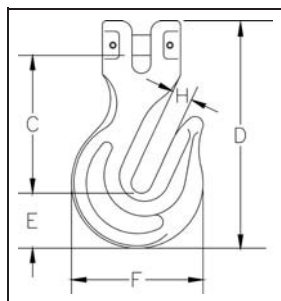
\* Ultimate Load is 4 times the Working Load Limit.



## A-338



- Alloy Steel - Quenched and Tempered.
- Individually Proof Tested at 2-1/2 times the Working Load Limit with certification.
- Pin locking requires no special tools.
- The use of A-338 Clevis Grab Hook will result in a 20 percent reduction in chain capacity. When used to hook back to chain leg to form a choker, the angle of the choke must be 120 degrees or greater. When used as a chain shortener, minimize twist of chain and ensure chain is fully engaged in hook.



### A-338 Clevis Grab Hook

Chain Size (in.)	A-338 Stock No.	Working Load Limit (lbs.)*	Weight Each (lbs.)	Dimensions (in.)				
				C	D	E	F	H
9/32 (1/4)	1027659	3500	.62	2.61	4.17	.89	2.16	.38
3/8	1027677	7100	1.26	3.21	5.21	1.16	3.00	.50
1/2	1027686	12000	3.45	4.19	6.95	1.69	4.00	.62
5/8	1027695	18100	5.64	5.03	8.25	1.88	4.64	.75
3/4	1027702	28300	10.40	5.95	9.97	2.19	5.26	.88
7/8	1027711	34200	13.62	6.92	11.56	2.56	6.12	1.00

\* Ultimate Load is 4 times the Working Load Limit.

Chain & Accessories

**SELBY ENGINEERING & LIFTING SAFETY LTD.**  
 Lifting Equipment and Height Safety Specialists  
 www.liftingsafety.co.uk sales@liftingsafety.co.uk  
 Tel: +44 (0) 1977 684 600 Fax: +44 (0) 1977 685 300