



# MI50 - MIGHTYLITE 6.2M - GALVANIZED WIRE

## Product use

MI50 - MightyLite 6.2m - Galvanized wire Self-Retracting Lifeline

Heavy-duty performance from a compact and easy-to-use block that features pressed steel housing, stainless steel springs and a fall indicator. Supplied with a swivel snap hook.

## Technical description

**Shell** : Aluminium alloy & stainless steel

**Mechanism** : Aluminium alloy & stainless steel

**Wire rope** : Ø4.8mm galvanised steel

**Weight** : 4.970 kg

**Static test** : Breaking strength: > 12 KN

**Dynamic tests** : Breaking strength: < 6 KN

**Fall Arrest distance**: < 2 m

Temperature: -30°C to +50°C

## Additional information

### Technical specifications and standard

**European directive** :  
89/686/CEE

**Norms** :  
EN360

**EC type attestation** :  
990643

**Quality Assurance**  
AFAQ: ISO 9001 : Version 2000

**Certification number** :  
0333 AFAQ/CTH

**Marking** :  
MILLER



[click address to go to...](#)

# MI50 - MIGHTYLITE 6.2M - GALVANIZED WIRE

The supplier or its legal representative supplier settled in the European community :

**MILLER**

declares that the new Individual Protection Equipment described hereafter :

Designation :

**MI50 - MightyLite 6.2m - Galvanized wire**

Article code :

**10 028 20**

is in conformity with Directive dispositions 89/686/CEE.

This PPE has been the object of the EC attestation type :

**990643**

delivered by :

**SGS**

**SGS House**

**RH19 4**

**WEST SUSSEX**

**United Kingdom**

Identified by the number :

**120**

Made on the : **05/08/2004**

at : **Vierzon**

Division : **Fall Protection**

By : **Frederic GUICHARD**

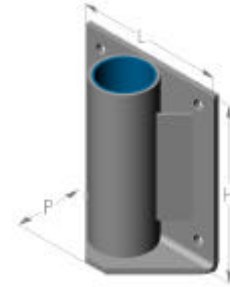
[click address to go to....](#)

# POTEX Mount Bases (1/2)

## Technical Specifications

**Reference:** 1004233

**Description :** Wall Mount Base



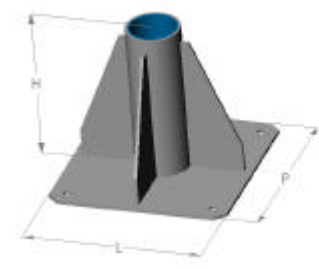
**Dimensions :**

<i>L</i>	<i>H</i>	<i>P</i>
250 mm	300 mm	105 mm

**Main features :** Material : Aluminium  
Weight : 4.2 kg  
Standard : EN-795 when used with Potex (Ref 1002920 or 1004232)

**Reference:** 1004234

**Description :** Floor Mount Base



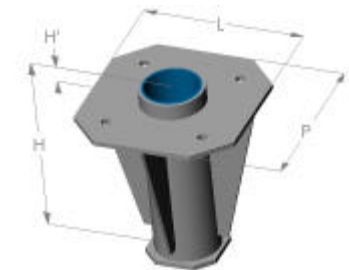
**Dimensions :**

<i>L</i>	<i>H</i>	<i>P</i>
330 mm	275 mm	330 mm

**Main features :** Material : Aluminium  
Weight : 4.38 kg  
Standard : EN-795 when used with Potex (Ref 1002920 or 1004232)

**Reference:** 1004235

**Description :** Deck Mount Base



**Dimensions :**

<i>L</i>	<i>H</i>	<i>P</i>
250 mm	275 mm	250 mm

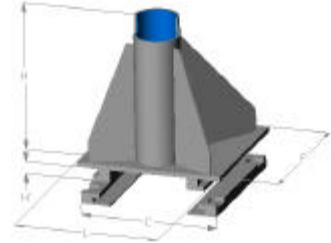
**Main features :** Material : Aluminium  
Weight : 4 kg  
Standard : EN-795 when used with Potex (Ref 1002920 or 1004232)

# POTEX Mount Bases (2/2)

## Technical Specifications

**Reference:** 1004236

**Description :** Truck Attachment Base



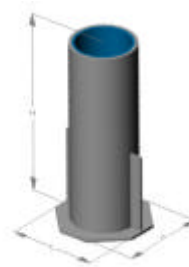
**Dimensions :**

<i>L</i>	<i>H</i>	<i>P</i>
320 mm	360 mm	320 mm

**Main features :** Material : Aluminium  
Weight : 9.7 kg  
Standard : EN-795 when used with Potex (Ref 1002920 or 1004232)

**Reference:** 1005127

**Description :** Flush Floor Base



**Dimensions :**

<i>L</i>	<i>H</i>	<i>P</i>
140 mm	325 mm	140 mm

**Main features :** Material : Aluminium  
Weight : 1.8 kg  
Standard : EN-795 when used with Potex (Ref 1002920 or 1004232)

# MILLER Column

## Technical Specifications

**Product:** MN50  
**Reference:** 9879MN50

### Main Features

#### Body

Aluminium

#### Screwjack

Galvanised steel

#### Winch

Galvanised steel sheet

#### Wire

30 meters - Ø4.8mm galvanised steel

#### Dimensions

##### **Fully extended:**

Maximum outer height: 2.25m

Height below carabiner: 2.1m

Length: 1.3m

Maximum outer width: 1.3m

Width between feet: 1.11m

##### **Fully retracted:**

Minimum outer height: 2.05m

Height below carabiner: 1.9m

Length: 1.3m

Minimum outer width: 1m

Width between feet: 0.81m

#### Reach of lifting wire

395mm

#### Weight

MN50: 40 kg

#### Tests

Breaking strength: > 10 KN

Maximum safe working load: 165 kg

Temperature: -30°C to +50°C

#### Standards

**EN 795: ANCHOR DEVICES**

