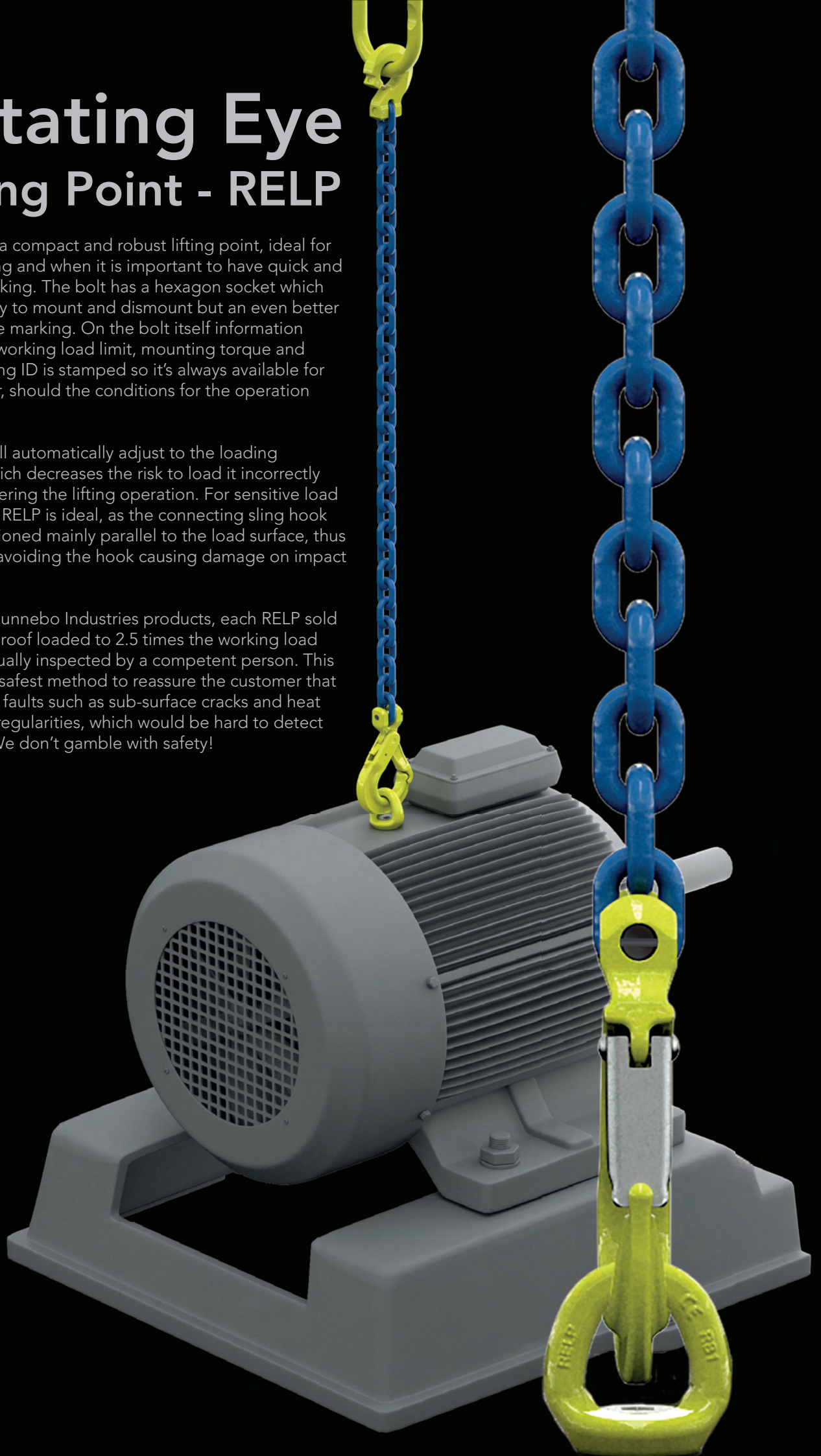


# Rotating Eye Lifting Point - RELP

The RELP is a compact and robust lifting point, ideal for top-mounting and when it is important to have quick and easy on-hooking. The bolt has a hexagon socket which makes it easy to mount and dismount but an even better feature is the marking. On the bolt itself information such as the working load limit, mounting torque and manufacturing ID is stamped so it's always available for the operator, should the conditions for the operation change.

The RELP will automatically adjust to the loading direction which decreases the risk to load it incorrectly and endangering the lifting operation. For sensitive load surfaces the RELP is ideal, as the connecting sling hook will be positioned mainly parallel to the load surface, thus completely avoiding the hook causing damage on impact on the load.

As with all Gunnebo Industries products, each RELP sold have been proof loaded to 2.5 times the working load limit and visually inspected by a competent person. This is by far the safest method to reassure the customer that there are no faults such as sub-surface cracks and heat treatment irregularities, which would be hard to detect otherwise. We don't gamble with safety!



## Rotating Eye Lifting Point RELP

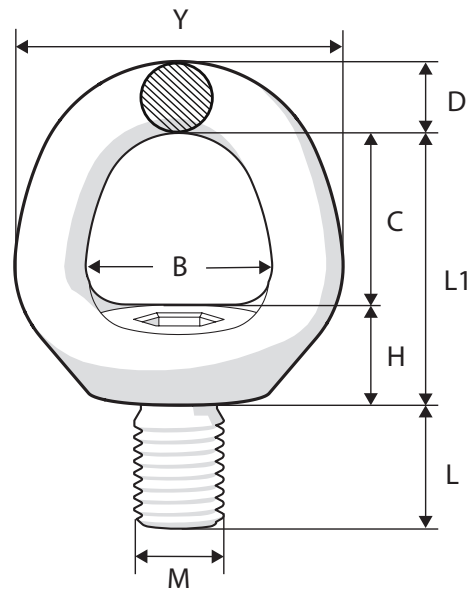
Art. no.	Code	B	C	D	H	L	L1	M	Y
Z102408	RELP-M8	28	28	11	14	15	42	8	50
Z102410	RELP-M10	28	28	11	14	15	42	10	50
Z102412	RELP-M12	32	33	13	13	20	47	12	58
Z102416	RELP-M16	39	41	15	16	24	57	16	70

Larger sizes up to M48 will be available in November 2015

## RELP with UNC thread

Art. no.	Code	B	C	D	H	L	L1	M	Y
Z102508	RELP 5/16"-18 UNC	28	28	11	14	15	42	5/16"	50
Z102510	RELP 3/8"-16 UNC	28	28	11	14	15	42	3/8"	50
Z102512	RELP 1/2"-13 UNC	32	33	13	13	20	47	1/2"	58
Z102516	RELP 5/8"-11 UNC	39	41	15	16	24	57	5/8"	70

Larger sizes up to M48 will be available in November 2015



Tight space



Limited height



Vertical lift



Angular lift

## Working Load Limits - RELP

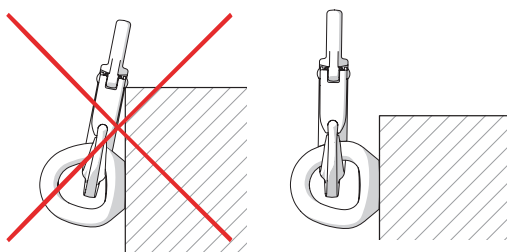
Symmetric Load (tonne)	1 leg		2 legs		2 symmetric		3 & 4 symmetric		Tightening torque	Allen key
	No. of legs	Angle $\beta$	No. of legs	Angle $\beta$	No. of legs	Angle $\beta$	No. of legs	Angle $\beta$		
	1	0° *	1	90°	2	0°	2	90°		
							2 symmetric			
							0-45°	45-60°		
							0-45°	45-60°		
RELP -M8	0.7	0.3	1.4	0.6	0.4	0.3	0.6	0.4	10 Nm	8.0
RELP 5/16"-18 UNC	0.7	0.3	1.4	0.6	0.4	0.3	0.6	0.4	7Ft.Lbs	5/16"
RELP -M10	1.2	0.5	2.4	1.0	0.7	0.5	1.0	0.7	15 Nm	8.0
RELP 3/8"-16 UNC	1.2	0.5	2.4	1.0	0.7	0.5	1.0	0.7	11Ft.Lbs	5/16"
RELP -M12	2.0	0.8	4.0	1.6	1.1	0.8	1.6	1.2	27 Nm	8.0
RELP 1/2"-13 UNC	2.0	0.8	4.0	1.6	1.1	0.8	1.6	1.2	20Ft.Lbs	5/16"
RELP -M16	3.5	1.5	7.0	3.0	2.1	1.5	3.1	2.2	60 Nm	8.0
RELP 5/8"-11 UNC	3.5	1.5	7.0	3.0	2.1	1.5	3.1	2.2	44Ft.Lbs	5/16"

\* provided only axial loading takes place, ie no bending force applied in the direction of the thread.

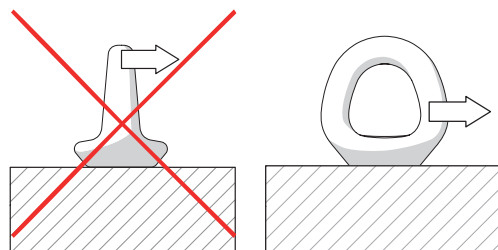
Vertical rotation under load

Tilting under load

## User advice



Make sure the hook doesn't lie against the load surface during lift



Never side-load the RELP

Sensitive load surface

Single part lift



Multiple part lift

Integrated combination (hook or link)