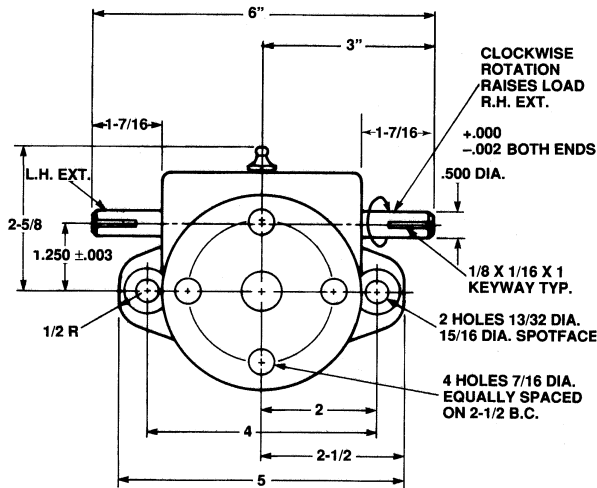
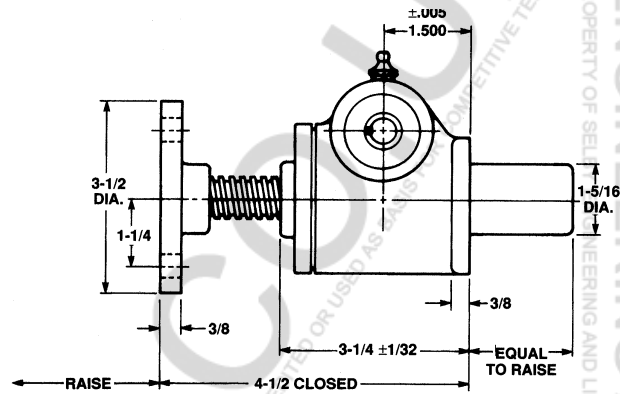


# Machine Screw Actuators

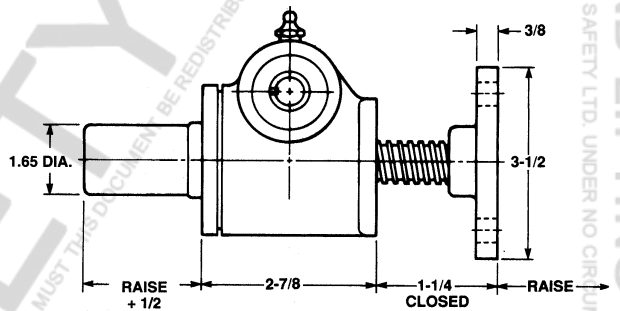
## 1 Ton Capacity



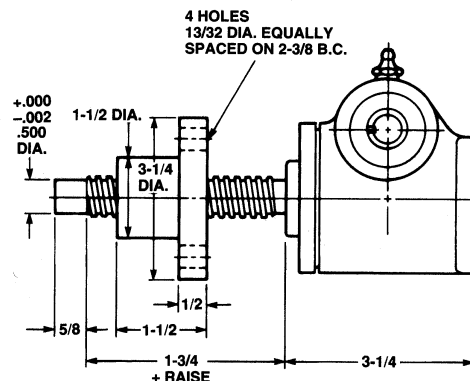
3/4" Diameter x .200 Lead Lifting Screws



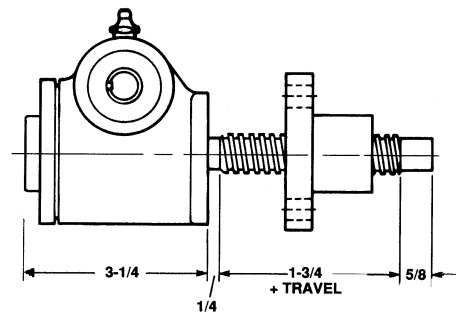
Upright: M-2501



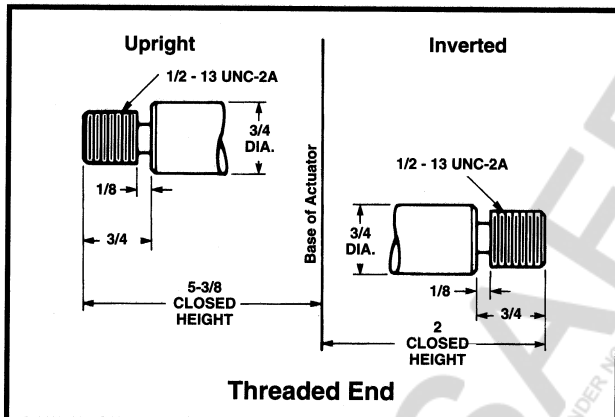
Inverted: M-2500



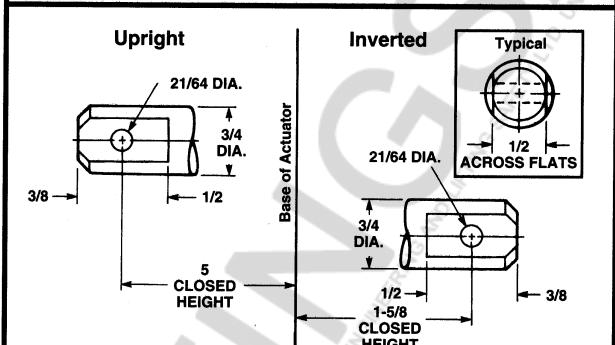
Upright Rotating: UM-2502



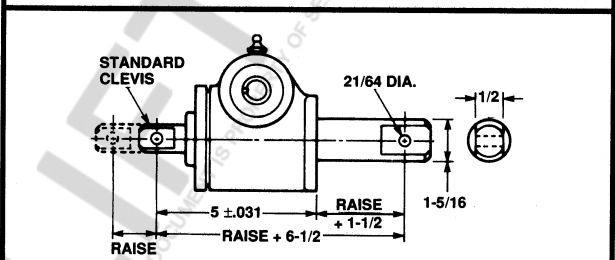
Inverted Rotating: DM-2502



Threaded End



Clevis End



Double Clevis: CCM-2501

Maximum Allowable Raise in Compression 10" —Rating 1500 Lbs.  
Maximum Raise at Rated Load in Compression 8"

Note: Lifting screw is not keyed. Top should be secured to a lifting member to prevent rotation. When a Bellows Boot is required, see pages 143-144. Dimensions are subject to change without notice.

SELBY ENGINEERING AND LIFTING SAFETY LTD. TEL: +44 (0) 1977 684 600

SELBY ENGINEERING AND LIFTING SAFETY LTD. TEL: +44 (0) 1977 684 600