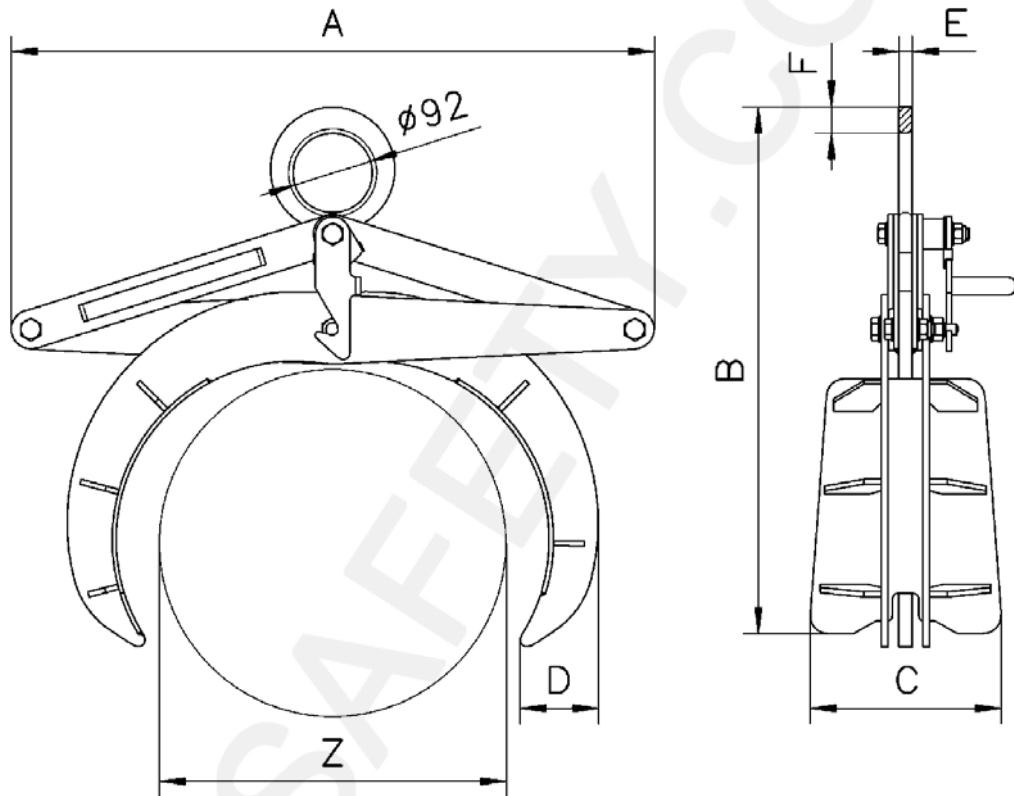


DESCRIPTION

The TRU round stock scissor grab is designed to lift and handle material such as tubes, pipes, rolls of plastic and roofing felt. The jaws can be fitted with plastic or rubber lined pads to minimise marking of sensitive surface materials, the lining also helps prevent items slipping if the grab has not been positioned correctly. The TRU is fitted with a manually operated pawl that locks the grab in the open position. Grabs can be fitted with an automatic open/close device for remote operation.

DIAGRAM



TABLE

MODEL	WLL kg	PIPE DIA mm Z	Weight kg	A	B Min Max	C	D	E	F
TRU0.1/150	100	50-150	7	270	292-458	97	43	8	17
TRU0.5/200	500	35-200	15	503	417-723	150	56	15	17
TRU1.0/200	1000	35-200	20	509	437-745	178	82	15	30
TRU1.5/300	1500	80-300	24	720	520-937	204	84	20	25
TRU3.0/300	3000	80-300	49	740	582-960	220	125	20	30
TRU4.0/600	4000	200-600	150	1420	930-1815	318	205	30	35

SELBY ENGINEERING AND LIFTING SAFETY LTD. TEL: +44 (0) 1977 684 600

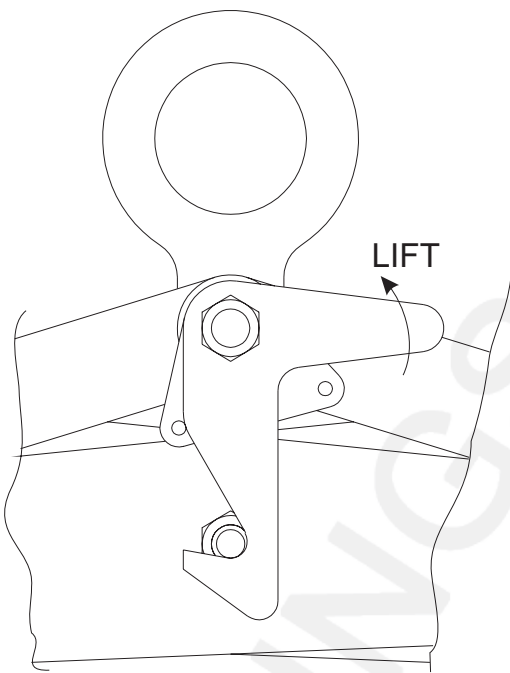
RESTRICTIONS

The TRU must be positioned close to the centre of gravity of the load to be lifted. The working load limit of the grab should be as close as possible to the weight of the load to be lifted. The protective lining only restricts the material from slipping if the material is free from oil, grease, dirt etc.

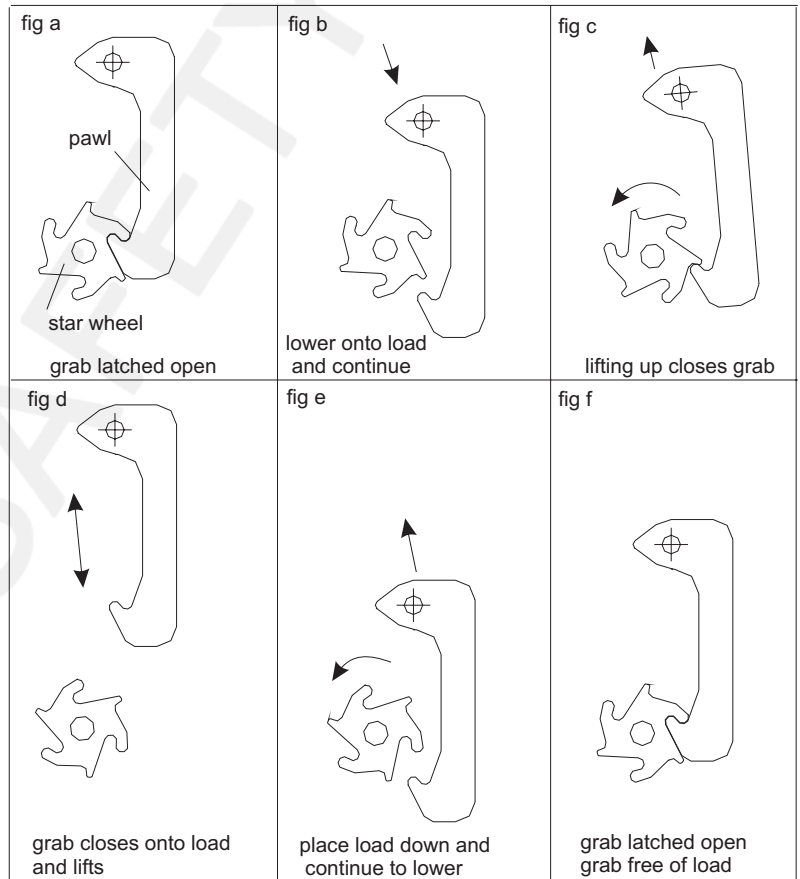
OPTIONS

These grabs are designed to handle round materials such as bar or tube of any material. They have the option of manual or automatic latching and various jaw lining materials

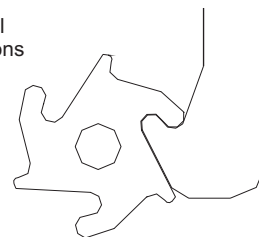
Manual Latch



Automatic latch



Check for all three positions



Check pawl and star wheel engagement on a weekly basis
Pawl must fit in star wheel as shown
Replace both components if distortion is found

Other sizes are available on request.

SELBY ENGINEERING AND LIFTING SAFETY LTD. TEL: +44 (0) 1977 684 600