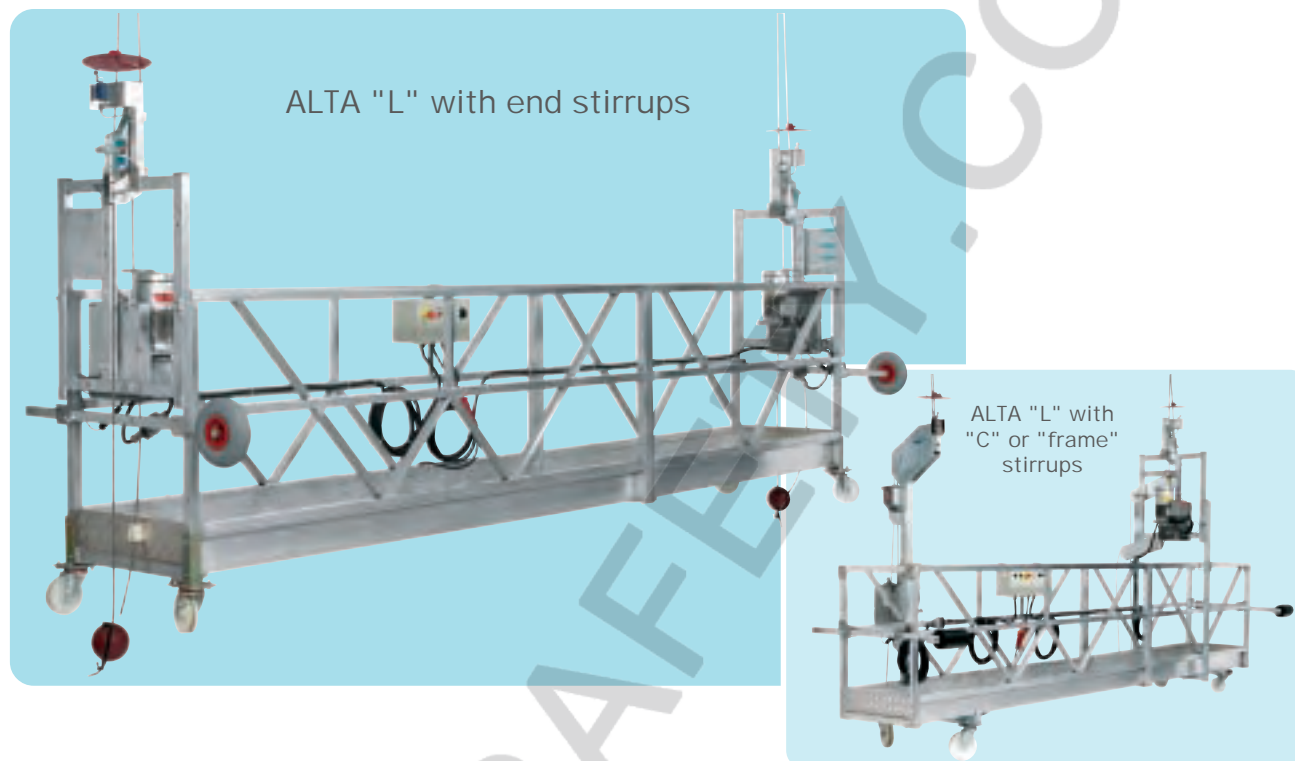


APPLICATIONS

The ALTA "L" platform is intended for temporary applications for lifting people and their working equipment - **at unlimited heights**¹. It is designed particularly for **lightweight applications**, such as painting and decorating, refurbishing, jointing and repairs, etc. The complete system consists of the working platform equipped with two electric TIRAK® hoists and the support wheels, suspended by means of steel wire ropes from a suspension structure.



SAFETY

To ensure safe operation without danger to personnel, the platform is fitted with the following safety devices:

- service brake incorporated in the TIRAK® hoist
- two fall arrest devices BLOCSTOP® acting on the safety wire ropes
- overload sensor incorporated in the TIRAK® hoists according to EN 1808
- two upper limit switches
- no power descent in case of power failure
- anti-tilt device
- emergency stop
- phase controller

CE Equipment in accordance with European Union Directives and manufactured under ISO 9001:2000.



TECHNICAL DATA

Working loads	see load tables (pages 4 and 7)
max. load / meter	120 kg/m
Maximal height	limited by the length of the wire rope ¹
Speed	
lifting / lowering	8,5 m/min
Hoist type	2x TIRAK® type according to configuration
Lifting / safety wire rope diameter	8 mm
Drive	mono-phase 230 V or three-phase 230/400 V
Fall arrest device	2x BLOCSTOP®
Noise level	< 73 db
Dimensions	according to configuration, see pages 2 to 6
length	2 to 15 m (composition of modules of 2 and 3 m)
inside width	60 cm
Materials	
platform	aluminium
stirrups	steel hot galvanised

¹) According to EN 1808 suspended platforms at heights exceeding 40 meters must be equipped with anchors each 20 m guiding the wire ropes.

SELBY ENGINEERING AND LIFTING SAFETY LTD. TEL: +44 (0) 1977 684 600

THE ALTA "L" VARIANTS

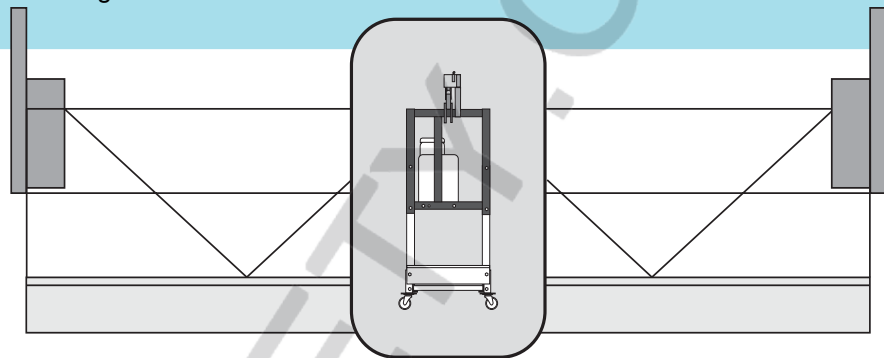
The different ALTA "L" variants are to be distinguished by their suspension principles. Three different stirrups allow to choose the platform responding the best to your requirements (type of work, type of building, maximal loads, number of persons, ...).

a) End stirrup:

fitted at the ends of the platform.

Advantages: the most economical and lightweight version, although showing extraordinary performances.

Maximal length depending on the hoist 8 m, 9 m or 12 m, maximal working loads see page 4.

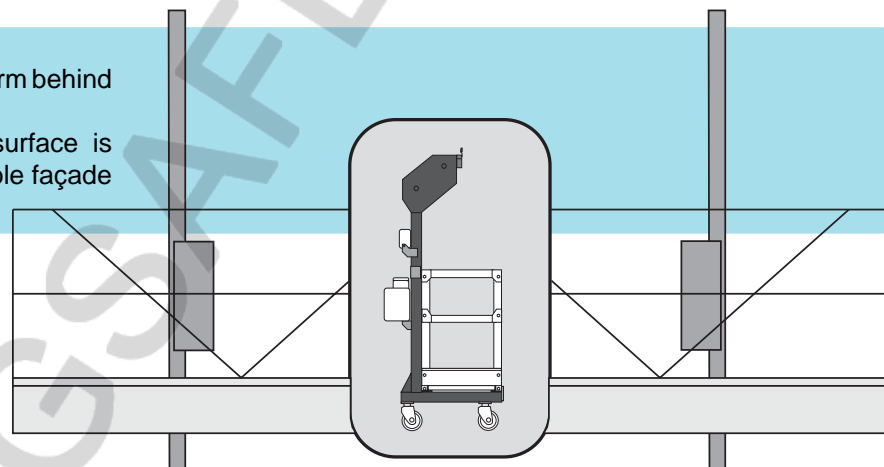


b) "C" stirrup:

placed at the rear of the platform behind the workers.

Advantages: the working surface is completely clear and the whole façade can be easily accessed.

Maximal length 15 m, maximal working loads see page 7.

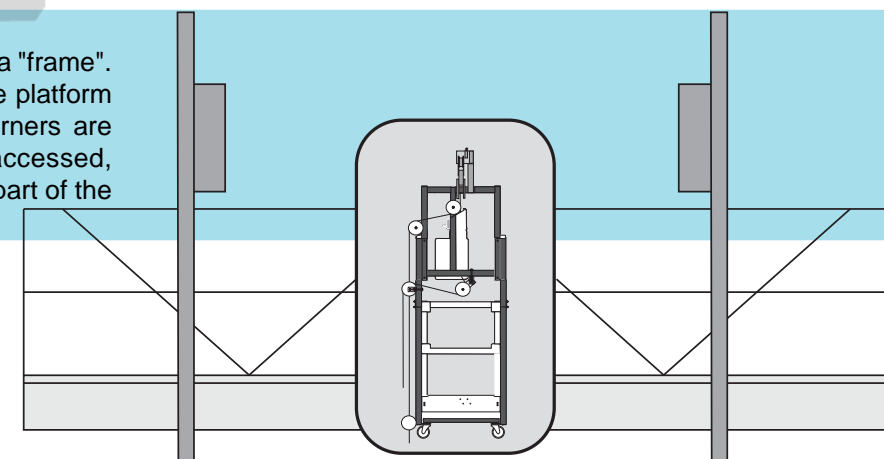


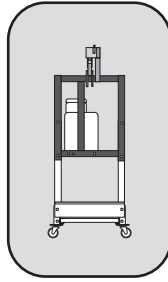
c) "Frame" stirrup:

slipped over the platform like a "frame".

Advantages: the ends of the platform and therefore the building corners are clear and can be easily accessed, exchangeable with the upper part of the end stirrup.

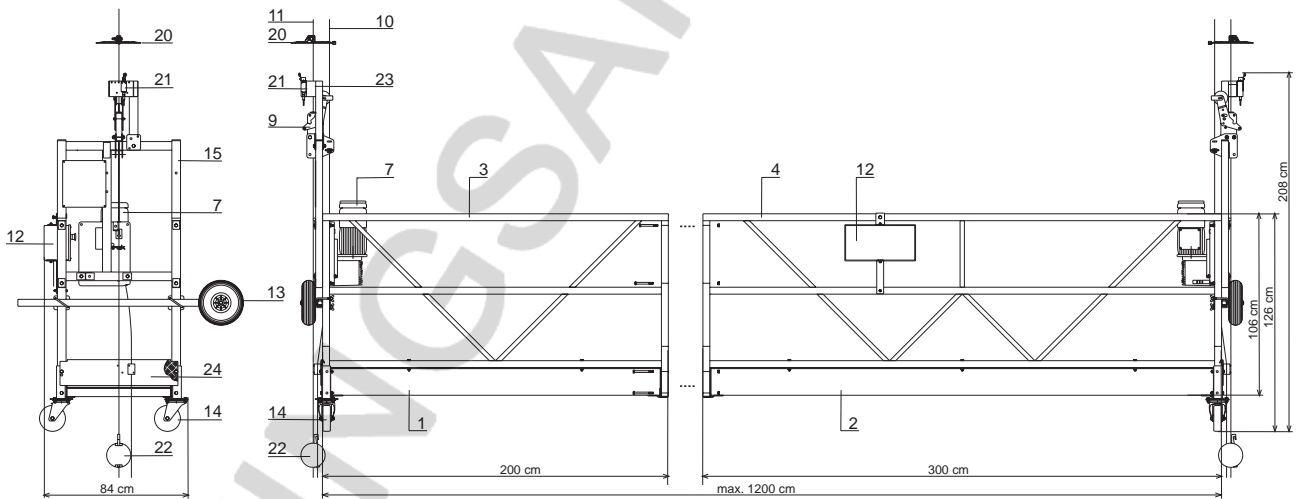
Maximal length 15 m, maximal working loads see page 7.



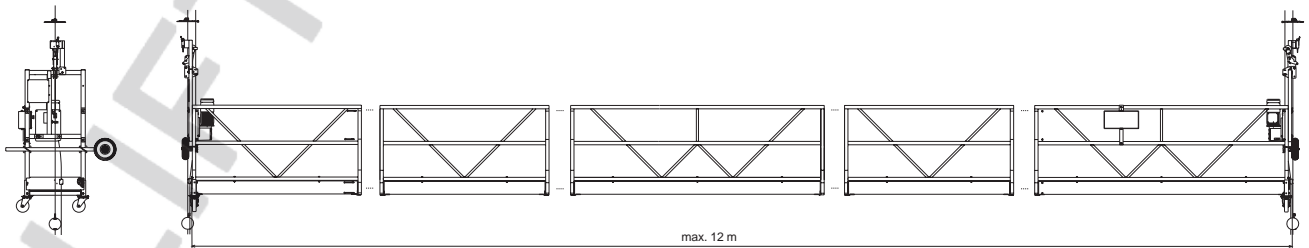


**ALTA "L" with end stirrups
MAIN COMPONENTS**

- 1 Floor panel length 2 m or 3 m
- 2 Side panel length 2 m or 3 m
- 7 TIRAK® hoist
- 9 BLOCSTOP® fall arrest device
- 10 Suspension wire rope
- 11 Safety wire rope
- 12 Control box
- 13 Support wheel
- 14 Castor wheel
- 15 End stirrup
- 20 Buffer plate
- 21 Upper limit switch
- 22 Ballast weight for safety wire rope



Measures in "cm"



SPARE PARTS
See spare parts list S-483.

technical sheet

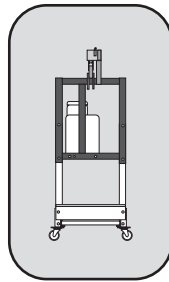
ALTA "L" temporary suspended platform (TSP) with TIRAK® powered hoists

ref.: T-483
révision: 8
date: 03/2005

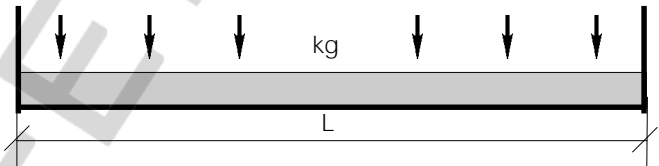
WORKING LOAD LIMITS

In accordance with the European standard the working loads are calculated in the following way:
the **first and the second persons** are calculated **80 kg + 40 kg of equipment**, and the following persons are

counted as 80 kg each. The maximal loads of ALTA "L" platforms are 240 to 680 kg. The load must be spread as evenly as possible over the length of the platform. Refer to the working load tables on the following pages.



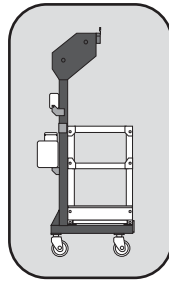
ALTA "L" with end stirrups



WORKING LOADS

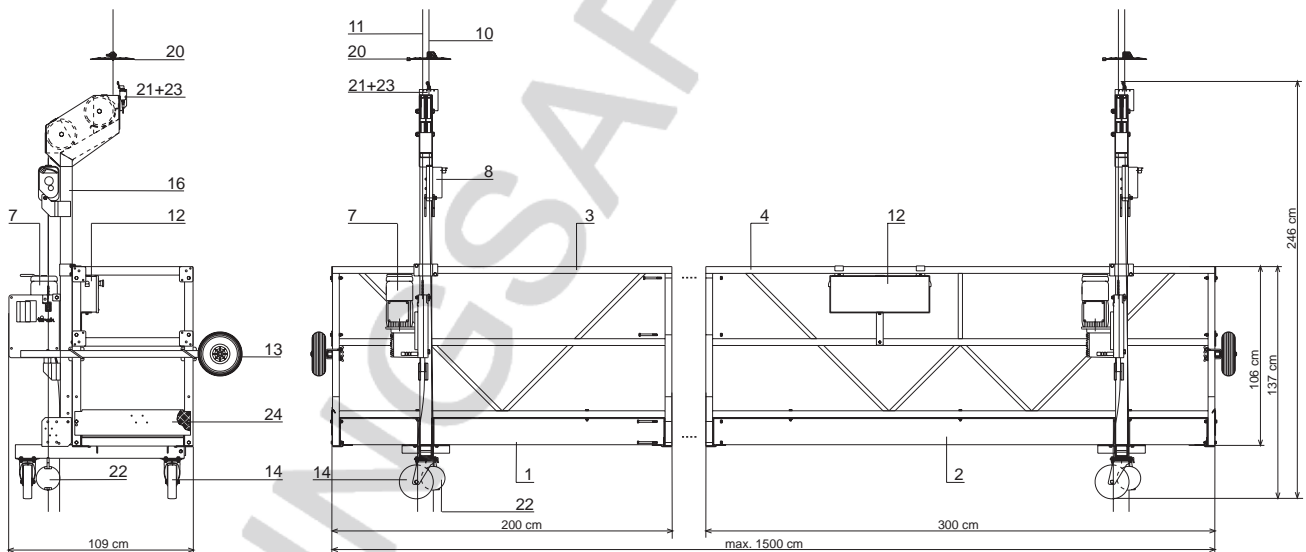
(= 80 kg)

L (m)	Composition of platform modules	2 x TIRAK® X 300 P 2 x 300 kg 8 mm			2 x TIRAK® X 400 P 2 x 400 kg 8 mm			2 x TIRAK® X 500 P 2 x 500 kg 8 mm		
		max. load (kg)	≅ number of persons + load	no-load weight (kg)	max. load (kg)	≅ number of persons + load	no-load weight (kg)	max. load (kg)	≅ number of persons + load	no-load weight (kg)
2	2 m	240	+ 80	180	240	+ 80	190	280	+ 80	280
3	3 m	360	+ 120	195	360	+ 120	205	360	+ 120	300
4	2+2 m	350	+ 110	225	480	+ 160	230	480	+ 160	325
5	3+2 m	320	+ 80	240	560	+ 160	250	600	+ 200	345
6	3+3 m	280	+ 120	255	540	+ 140	265	680	+ 200	365
7	3+2+2 m	250	+ 90	290	480	+ 80	295	650	+ 170	390
8	3+3+2 m	240	+ 80	305	400	+ 80	310	630	+ 150	410
9	3+3+3 m				320	+ 80	330	600	+ 120	430
10	3+3+2+2 m							540	+ 140	455
11	3+3+3+2 m							500	+ 100	475
12	3+3+3+3 m							480	+ 80	495

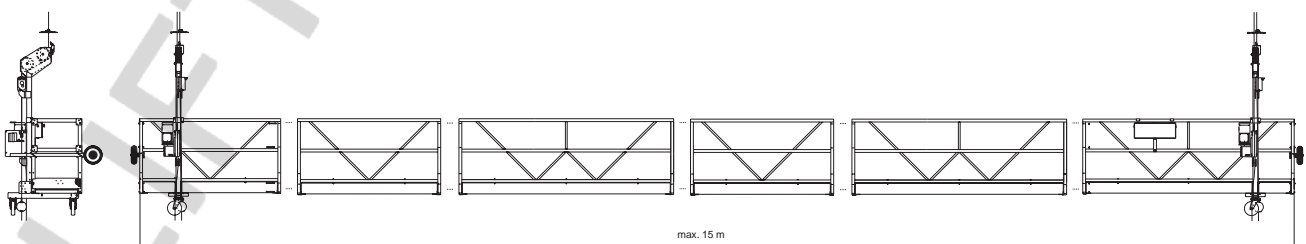


**ALTA "L" with "C" stirrups
MAIN COMPONENTS**

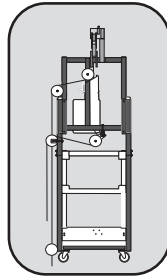
- 1 Floor panel length 2 m or 3 m
- 2 Side panel length 2 m or 3 m
- 7 TIRAK® hoist
- 9 BLOCSTOP® fall arrest device
- 10 Suspension wire rope
- 11 Safety wire rope
- 12 Control box
- 13 Support wheel
- 14 Castor wheel
- 16 "C" stirrup
- 20 Buffer plate
- 21 Upper limit switch
- 22 Ballast weight for safety wire rope



Measures in "cm"

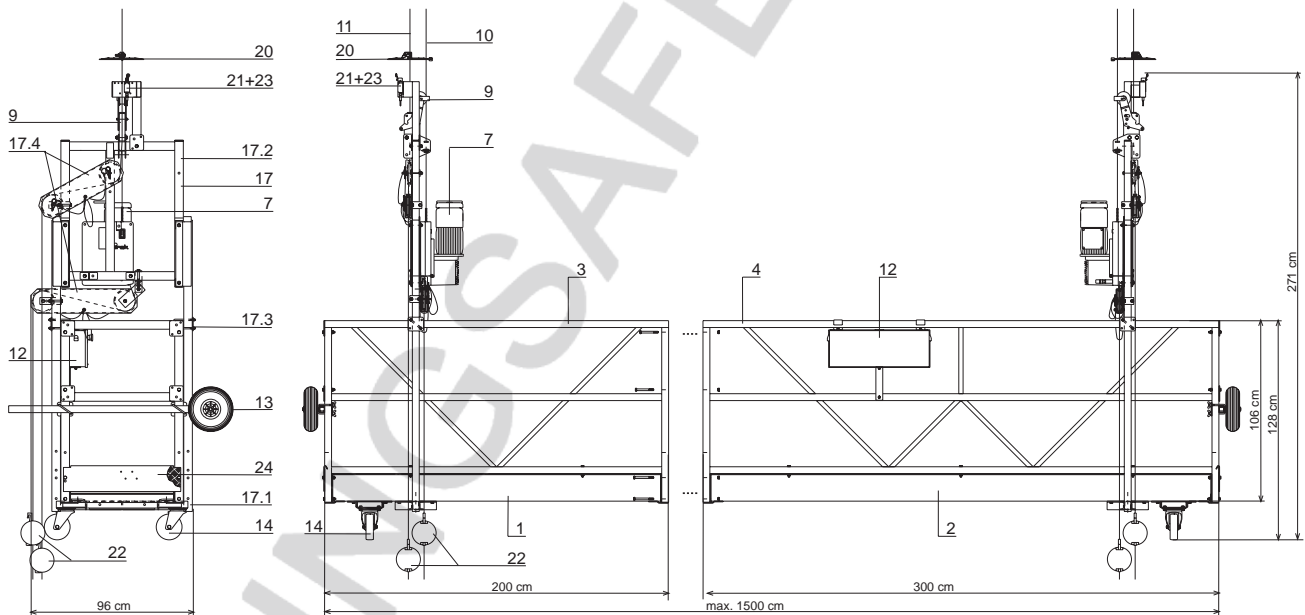


SPARE PARTS
See spare parts list S-483.

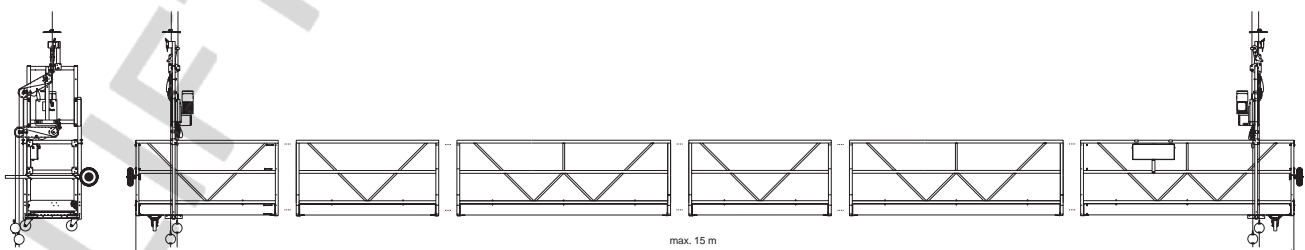


**ALTA "L" with "frame" stirrups
MAIN COMPONENTS**

- 1 Floor panel length 2 m or 3 m
- 2 Side panel length 2 m or 3 m
- 7 TIRAK® hoist
- 9 BLOCSTOP® fall arrest device
- 10 Suspension wire rope
- 11 Safety wire rope
- 12 Control box
- 13 Support wheel
- 14 Castor wheel
- 17 "Frame" stirrup complete (17.1+17.2+17.3+17.4)
- 20 Buffer plate
- 21 Upper limit switch
- 22 Ballast weight for safety wire rope



Measures in "cm"

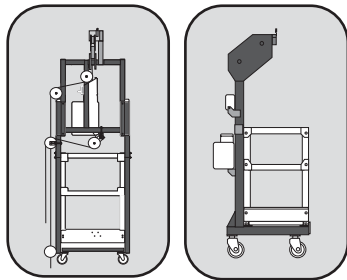


SPARE PARTS
See spare parts list S-483.

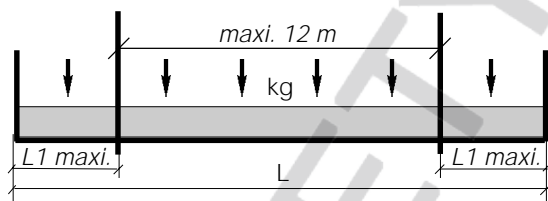
technical sheet

ALTA "L" temporary suspended platform (TSP) with TIRAK® powered hoists

ref.: T-483
révision: 8
date: 03/2005



ALTA "L" with "C" stirrups or
"frame" stirrups
2 x TIRAK® X-500 P



WORKING LOADS

(= 80 kg)

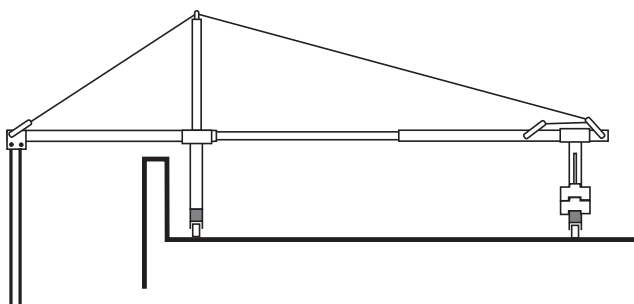
Hoist type nominal load capacity wire rope diameter Ø		2 x TIRAK® X 500 P 2 x 500 kg 8 mm				
L (m)	Composition of platform modules	max. load (kg)	≅ number of persons + load	no-load weight (kg)	overhang L1 (m)	max. load (kg)
3	3 m	360	+ 120	300	0,5	+ 40
4	2+2 m	480	+ 160	330	0,5	+ 40
5	3+2 m	560	+ 160	345	1,0	+ 40
6	3+3 m	420	+ 100	360	1,5	+ 40
7	3+2+2 m	420	+ 100	385	1,5	+ 40
8	3+3+2 m	400	+ 80	405	1,5	+ 40
9	3+3+3 m	400	+ 80	420	1,5	+ 40
10	3+3+2+2 m	350	+ 110	445	1,5	+ 40
11	3+3+3+2 m	340	+ 100	460	1,5	+ 40
12	3+3+3+3 m	330	+ 90	480	1,5	+ 40
13	3+3+3+2+2 m	320	+ 80	505	1,5	+ 40
14	3+3+3+3+2 m	320	+ 80	520	1,5	+ 40
15	3+3+3+3+3 m	320	+ 80	535	1,5	+ 40

SUSPENSION

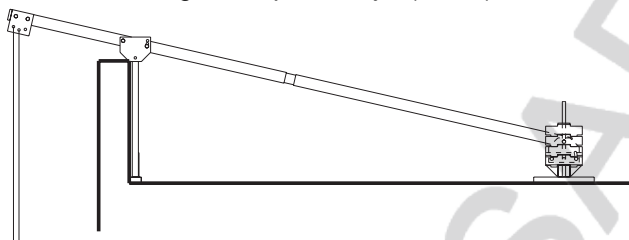
The ALTA platform can be suspended from all types of suspension which are manufactured according to the current standards and recommendations. The EN 1808 stipulates a safety factor of 3 for anchor points and suspension structures.

TRACTEL® offers a complete range of suspension structures which can be fitted on different types of roofs: the suspension jibs PORTAFIX® or PORTAFIX® "light" or the parapet clamp OMEGA (see the technical sheets as follows).

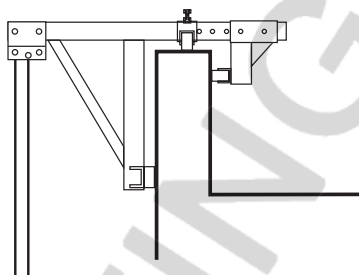
PORTAFIX® suspension jib (T-482) :



PORTAFIX® "light" suspension jib (T-705) :



OMEGA parapet clamp (T-704) :



DOUBLE-DECK PLATFORM

The ALTA platform can be easily transformed in a double-deck platform using especially designed attachment rods (refer to technical sheet T-706).



OPTIONS

Because of its modular design, the ALTA "L" platform can also be used in other configurations, tailored to each solution, for example:

- three level platform
- suspended platform with three or more suspension points
- equipment for permanent installation on a building
- platform working on a non-vertical plane
- circular platform
- platform fitted with manual hoists (TIRFOR or SCAFOR), etc.

Please contact us for these non-standard configurations.