

dynafor® LLZ

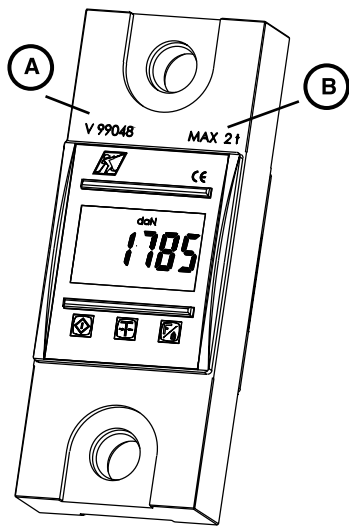


CE matériel
conforme aux
directives CE

Instructions d'emploi
Operating instructions
Bedienungsanleitung
Manual de empleo
Istruzioni di impiego
Instruções de operação
Handleiding
instruktion

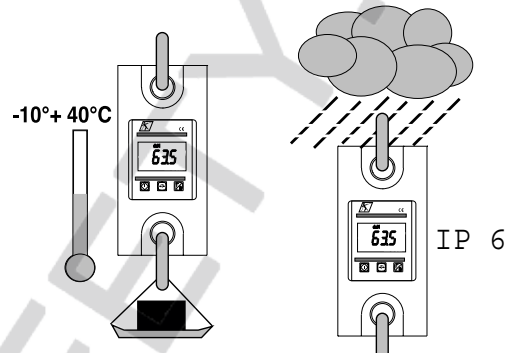


1. Description - Description - Beschreibung - Descripción - Descrizione - Descrição - Beschrijving - Beskrivelse

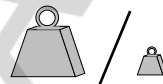
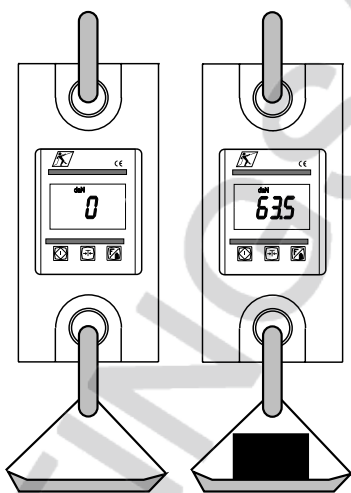


A. N° de série - Serial number -
Geräte-Nr. - Numero de serie - N° di serie -
Número de série - Serienummer - Serie nr.

B. Capacité - Capacity - Messbereich -
Capacidad - Capacità - Capacidad - Kapaciteit -
Kapacitet - (0,25t - 1t - 2t - 3,2t - 6,4t)

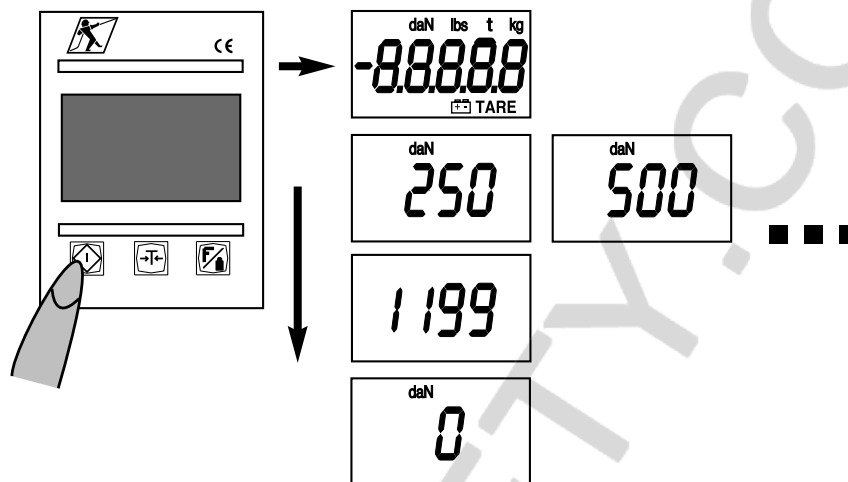


2. Utilisation - Operation - Handhabung - Utilización - Utilizzo - Utilização -
Gebruiksmogelijkheden - Brug

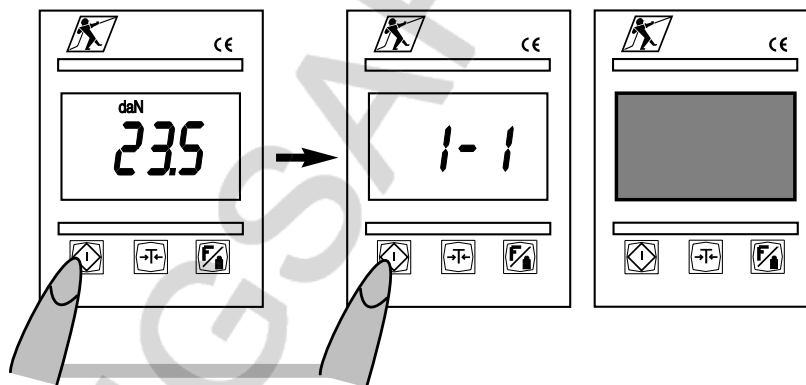


0 - 250 kg / 0,5 kg	± 2 kg	1,5 t
0 - 500 kg / 1 kg	± 4 kg	1,5 t
0 - 1000 kg / 2 kg	± 8 kg	1,5 t
0 - 2000 kg / 5 kg	± 15 kg	3,25 t
0 - 3200 kg / 5 kg	± 25 kg	3,25 t
0 - 6400 kg / 10 kg	± 50 kg	6,5 t
0 - 10000 kg / 20 kg	± 80 kg	13,5 t
0 - 20000 kg / 50 kg	± 150 kg	25 t

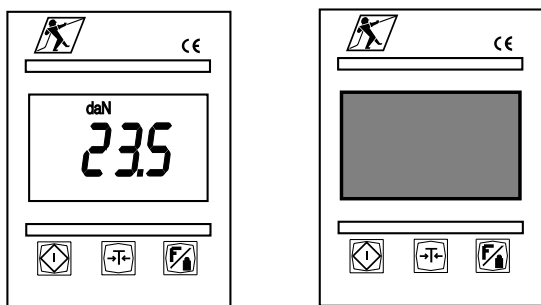
3. Marche - On - Einschalten - Marcha - Acceso - Ligar - Aan - Tændt



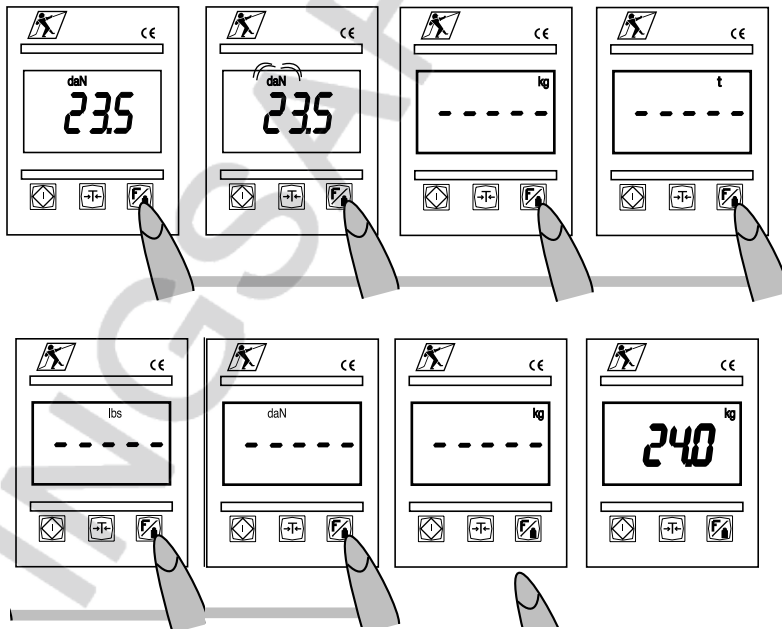
4. Arrêt - Off - Ausschalten -Parada - Spento - Desligar - Uit - Slukket



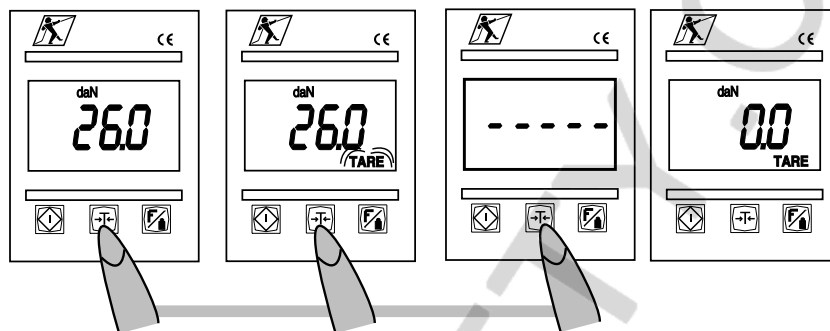
5. Arrêt automatique - Automatic stop - Automatische Abschaltung - Parada automática
- Spegnimento automatico - Paragem automática - Automatische uitschakeling -
Automatisk slukning



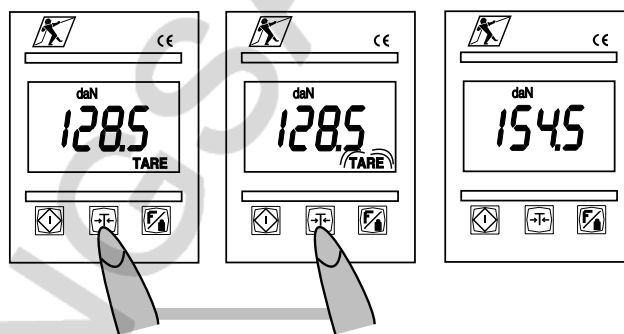
6. daN / kg / t : Changement d'unité - Change unit of measurement -
Auswahl der Maßeinheit - Carga de la unidad - Scelta di unità - Selecção de unidades
- Veranderen van meeteenheid - Ændring af måleenhed



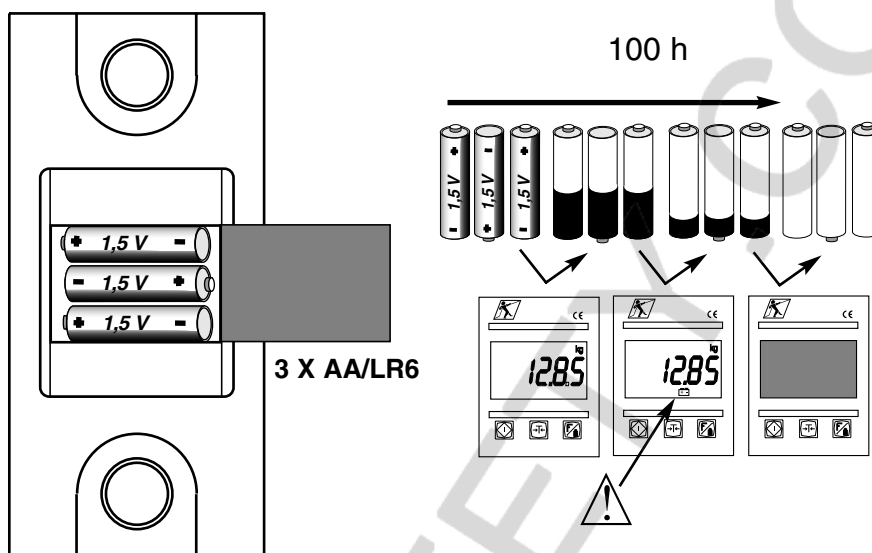
7. Tarage / Net - Tare / Net - Taraunterdrückung / Nettomessung - Tara / Neto -
Tara / Netto - Tara / Líquido - Netto tarreren - Tara / Netto



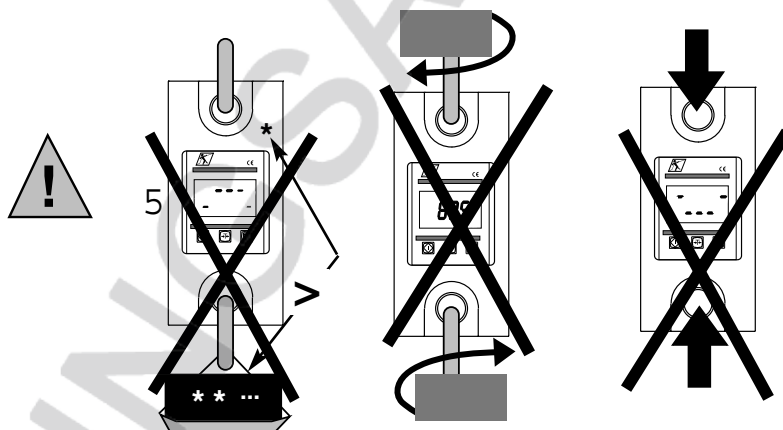
8. Net / Brut - Net / Gross - Netto / Brutto - Neto / Bruto - Netto / Lordo -
Líquido / Bruto - Netto / Bruto - Netto / Brutto



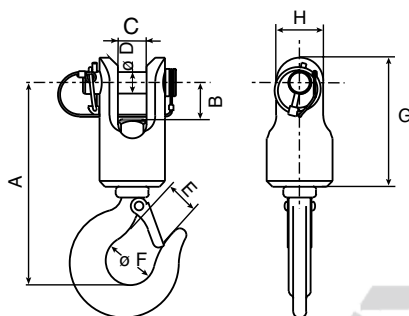
9. Autonomie - Battery life - Batterielebensdauer - Autonomía - Autonomia - Autonomia - Standtijd - Batteriets levetid



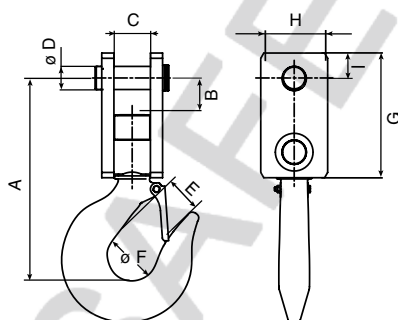
10. Interdits - Forbiden - Verbote - Prohibiciones - Vietato - Interdito - Verboden - Forbudt



CROCHET ORIENTABLE POUR DYNAFOR® LLZ 0,250 t à 3,2 t



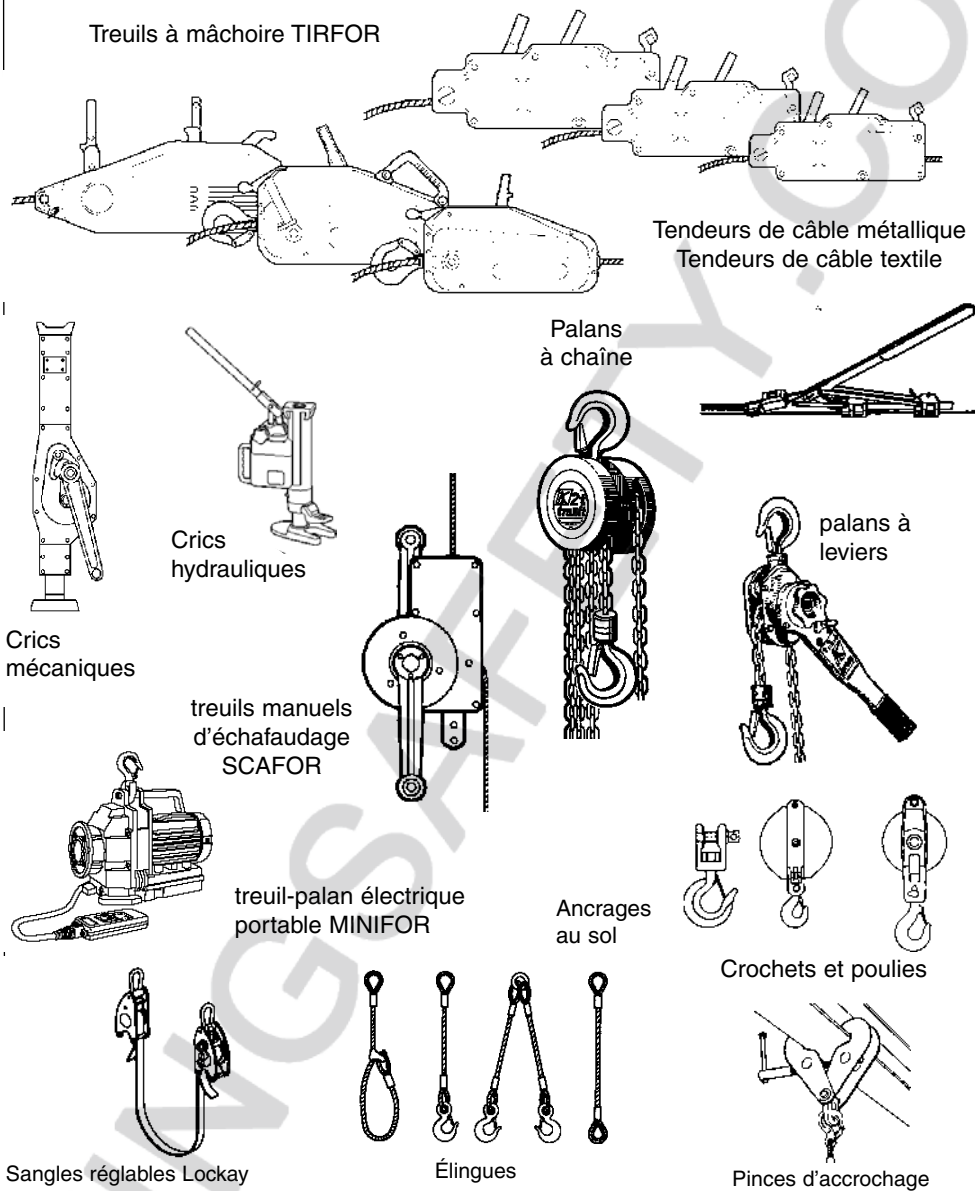
CROCHET ORIENTABLE POUR DYNAFOR® LLZ 6,4 t à 20 t



CROCHET pour modèles DYNAFOR®	Code	A	B	C	D	E	F	G	H	I	Poids kg
LLZ 0.25/0.5	40957	113	24	17	13	19	33	63	25		0.5
LLZ 1	40967	140	24	17	13	21	38	88	33		1
LLZ 2	103777	160	29	26	20	27	42	100	43		1,6
LLZ 3.2	40977	195	33	26	20	32	49	118	43		3,2
LLZ 6.4	105567	290	48	33	25	50	74	170	70	33	12
LLZ 10	105577	331	60	60	38	58	80	205	110	41	18
LLZ 20	105587	408	88	72	50	78	100	265	120	50	32



AUTRES APPAREILS ET ACCESSOIRES DE LEVAGE TRACTEL



TRACTEL S.A.S
29, rue du Progrès
F-93108 Montreuil Cedex
Tél. 33 (0) 1 48 58 91 32
Fax 33 (0) 1 48 58 19 95

TRACTEL BENELUX B.V.
Paardeweide 38 - 4824 EH BREDA
Nederland / les Pays-Bas
Tél. + 31 (0) 76-5 435 135
Fax + 31 (0) 76-5 435 136

SECALT S.A.
3, rue du Fort Dumoulin
B.P. 1113 ♦ L-1011 Luxembourg
Tél. (352) 43 42 42-1
Fax (352) 43 42 42-200

© DROITS DE REPRODUCTION RESERVES
Fabriqué par TRACTEL S.A.S

0396008 - Ind 01 - 03/2003
IMP. THEBAUT ROMILLY