

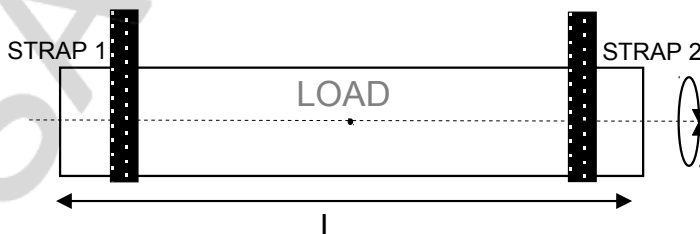
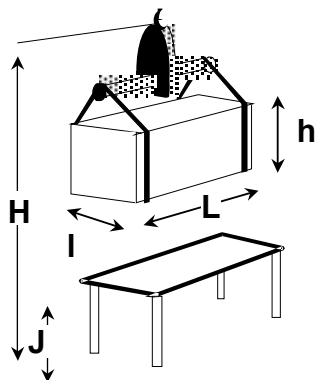
SPECIFICATION SHEET

Pal-Turn/ system for load turnover

Please specify name of the user firm :

DEFINITION OF LOAD

- Designation of product to be turned over:
(diagram or drawing to be supplied to us, if possible)
- Weight : min. = kg max. = kg
- Length (L): min. = mm max. = mm
- Width (l): min. = mm max. = mm
- Height (h): min. = mm max. = mm
- Outside Ø: min. = mm max. = mm
- Is the perimeter the same at any section of the load? yes no
- Position of the centre of gravity: centred offset
(if offset, please supply a diagram with the position of the centre of gravity marked as per 3 axes)
- Load made of what material ?
 steel wood stone cast iron other:
- Is the load likely to be damaged by the straps? yes no
- Are there sharp edges that might damage the straps? yes no
- Temperature of the load: ambient other (specify):°C



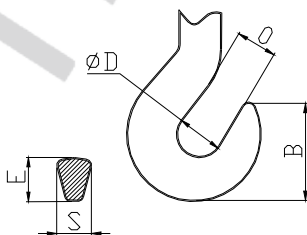
LIFTING APPLIANCE & ENVIRONMENT

Force of lifting appliance: kg

- Type of suspension hook: single hook double hook other (specify):

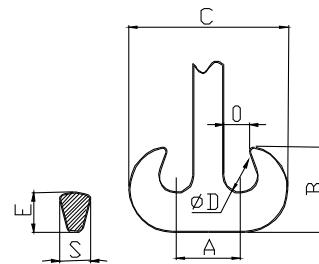
single hook

O =
E =
S =
B =
Ø D =



double hook

O =
E =
S =
A =
B =
C =
Ø D =



- Does the hook tip over ? yes no

- Is the load taken up: from the floor on a support on a pallet on a machine other
- Is the load to be set down: on the floor on a support on a pallet on a machine other
- Will the load be rotated over a worktable or support? yes no

Available height under hook: H = mm
 Height of potential support: J = mm

COMPLEMENTARY DATA

- Will there be any welding operation on the load during the rotation? yes no
- Turning over angle:
 - ¼ turn (90°) ½ turn (180°) 1 complete turn (360°)
- Do you have access to the load ends in order to get the straps over? yes no
- If not, can the working place be fitted out in order to enable getting the straps over? yes no
- Will Pal-Turn be used: outside inside
 - in a specific environment:
- Turning speed (straps flow rate):
 - single-speed (about 3 m/ mn) double-speed other: m/ mn
- Motor energy:
 - 230 V/ 50 Hz tri 400 V/ 50 Hz tri 500 V/ 50 Hz tri
 - autonomous on battery (2 t model exclusively) other:
- IP protection index:
 - standard IP 54 (dust and water projection)
 - IP 55 IP 65 other
- Control device:
 - standard wire ergonomic control gear infrared
 - coupled to lifting means other:

USE

- Approximate number of uses:/ hour or/ day or/ month or/ year

CURRENT HANDLING APPLIANCE

- does not exist
- similar equipment used.
 - Brand: Model:
- another type of equipment is used: