

Sling Saver Shackle Accessories

Sling Saver®

S-255 SPOOL



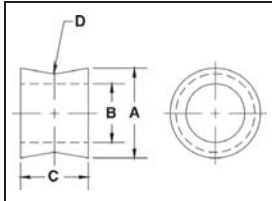
SELBY ENGINEERING & LIFTING SAFETY LTD.

Lifting Equipment and Height Safety Specialists

www.liftingsafety.co.uk sales@liftingsafety.co.uk

Tel: +44 (0) 1977 684 600 Fax: +44 (0) 1977 685 300

S-256 LINK PLATE

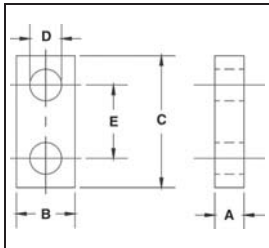


S-255 Spool

- The "Spool" is designed to keep the load centered on the pin, thus keeping the sling positioned correctly in the shackle bow.

Working Load Limit (t)*	S-255 Stock No.	Weight Each (lbs.)	Dimensions (in.)			
			A	B	C	D
3-1/4	1020903	.33	1.25	.81	.75	.19
6-1/2	1020912	.57	1.50	.94	1.00	.25
8-3/4	1020921	.89	1.75	1.05	1.19	.31
12-1/2	1020930	1.45	2.00	1.31	1.50	.38
20-1/2	1020939	2.79	2.50	1.63	1.88	.44
35	1020948	2.40	3.25	2.13	2.25	.50
50	1020957	4.06	3.75	2.38	2.75	.62

* Maximum Proof Load is 2.5 times the Working Load Limit. Minimum Ultimate Strength is 5 times the Working Load Limit.



S-256 Link Plate

- The "Link Plate" is designed to connect two(2) S-252 or S-253 "Sling Saver" Shackles together.

Working Load Limit (t)*	S-256 Stock No.	Weight Each (lbs.)	Dimensions (in.)				
			A	B	C	D	E
3-1/4	1020785	.83	.75	1.50	3.38	.81	1.88
6-1/2	1020796	1.62	1.00	1.75	4.12	.94	2.25
8-3/4	1020807	2.71	1.25	2.00	4.75	1.06	2.62
12-1/2	1020818	5.18	1.50	2.50	6.00	1.31	3.37
20-1/2	1020829	8.19	1.75	3.00	7.00	1.62	3.75
35	1020840	17.19	2.00	4.00	9.25	2.12	5.00
50	1020851	37.40	3.00	5.00	10.50	2.38	5.75

* Maximum Proof Load is 2.5 times the Working Load Limit. Minimum Ultimate Strength is 5 times the Working Load Limit.

Sling Saver Fittings