

Hand chain hoist model VSplus

Capacity 500 - 5000 kg

The Yale hand chain hoist VSplus is through further technical development the successor of our proven VS model. We set standards with the extremely robust all-steel construction and high quality bearings for drive pinion, load chain sheave and gearbox. A maximum of corrosion prevention and maintenance friendliness are special features of this model.

Features

- 4 strong bolts between the side plates and the reinforced housing covers ensure increased stability.
- Precision machined guide rollers ensure smooth running of the load chain.
- Encapsulated, life-time lubricated bearings ensure a long service life.
- Brake system protected against the ingress of dust, foreign particles and corrosion.
- Reinforced hand wheel cover with stiffening strips in conjunction with steel through going studs further increase hoist stability.
- Zinc-plated load chain as standard for added corrosion protection.

Options

- Overload prevention device.
- Chain container
- Stainless steel load and hand chains.

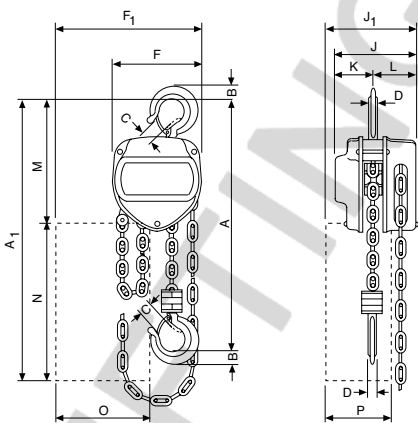
! Yale hoists and trolleys are not designed for passenger elevation applications and must not be used for this purpose.

Technical data model VSplus

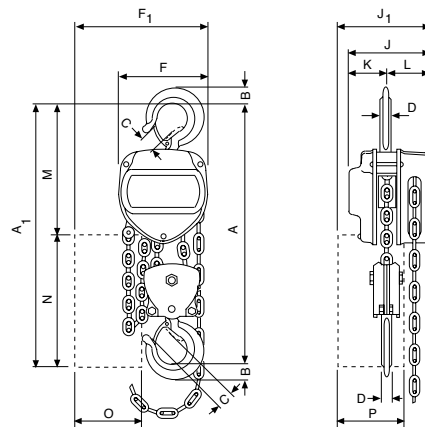
Model	EAN-No. 4025092*	Capacity in kg/ number of chain falls	Chain dimensions d x p mm	Hand chain overhaul for 1 m lift m	Pull on hand chain at WLL daN	Weight at standard lift (3 m) kg
VSplus 0,5/1	*078832	500/1	6 x 18	28	26	9.0
VSplus 1,0/1	*078726	1000/1	6 x 18	42	36	11.2
VSplus 2,0/1	*079358	2000/1	8 x 24	54	54	18.0
VSplus 2,0/2	*079136	2000/2	6 x 18	84	37	15.3
VSplus 3,0/1	*079372	3000/1	10 x 30	83	52	28.0
VSplus 3,0/2	*079129	3000/2	8 x 24	108	41	24.7
VSplus 5,0/2	*079341	5000/2	10 x 30	165	44	38.7

Dimensions model VSplus

Model	VSplus 0,5/1	VSplus 1,0/1	VSplus 2,0/1	VSplus 2,0/2	VSplus 3,0/1	VSplus 3,0/2	VSplus 5,0/2
A min., mm	320	370	450	530	530	620	620
A1, mm	455	484	576	491	644	596	644
B, mm	17	15	33	31	38	41	48
C, mm	29	30	33	34	38	37	43
D, mm	11	15	23	24	27	24	33
F, mm	125	147	183	147	215	183	215
F1, mm	213	232	314	232	333	314	333
J, mm	115	125	142	125	163	142	163
J1, mm	146	153	174	153	179	174	179
K, mm	51	57	68	57	79	68	79
L, mm	64	68	74	68	84	74	84
M, mm	195	224	266	231	316	286	334
N, mm	260	260	310	260	310	310	310
O, mm	140	140	200	140	200	200	200
P, mm	110	110	130	110	130	130	130



Model VSplus, 500 - 3000 kg, single fall



Model VSplus, 2000 - 5000 kg, double fall



Option: Chain container