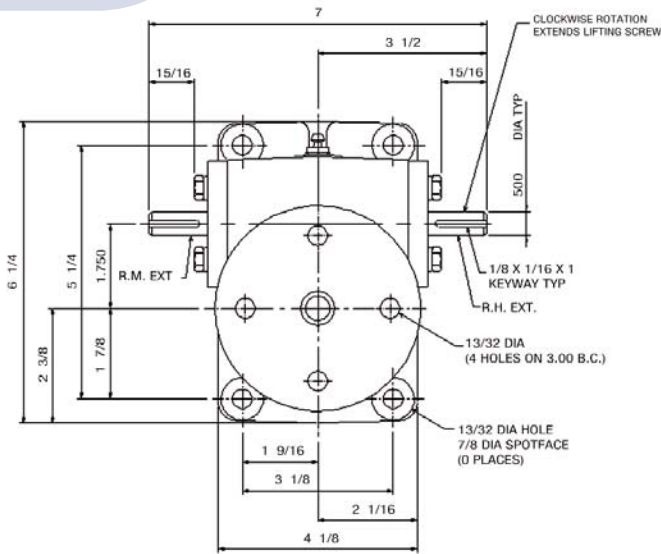


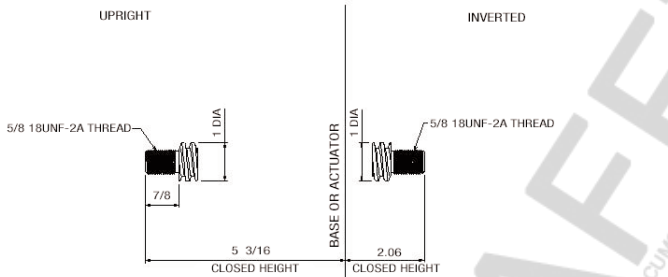
Machine Screw Actuators

3 Ton Capacity

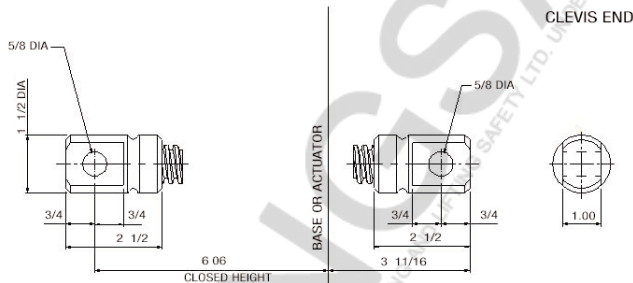
NEW



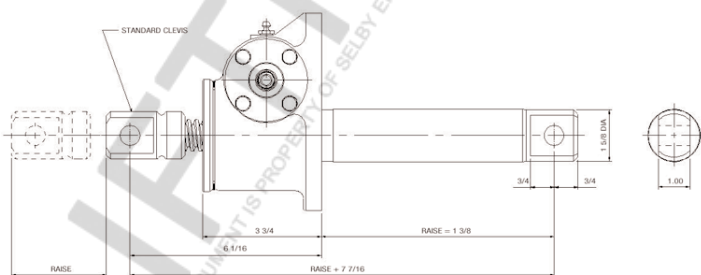
1" DIAMETER X .250 LEAD LIFTING SCREW



THREADED END

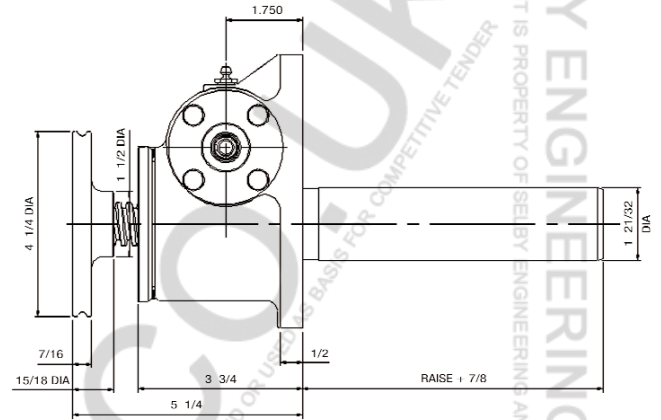


CLEVIS END

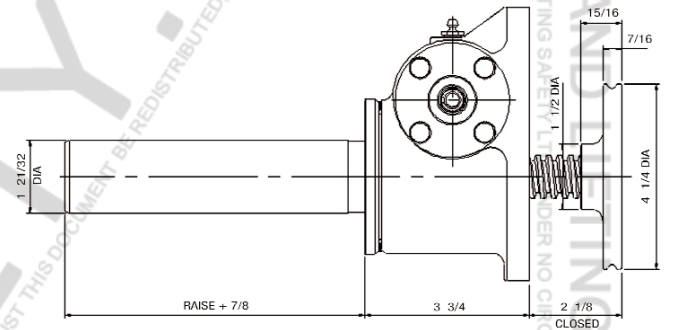


Double Clevis: CCM-90003

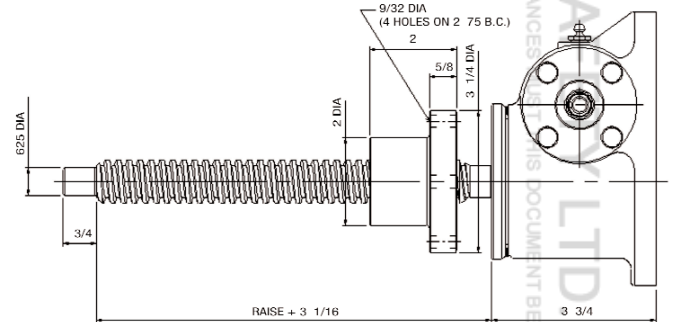
MAXIMUM ALLOWABLE RAISE IN COMPRESSION 14" -RATING 3000 LBS.
MAXIMUM RAISE AT RATED LOAD IN COMPRESSION 9"



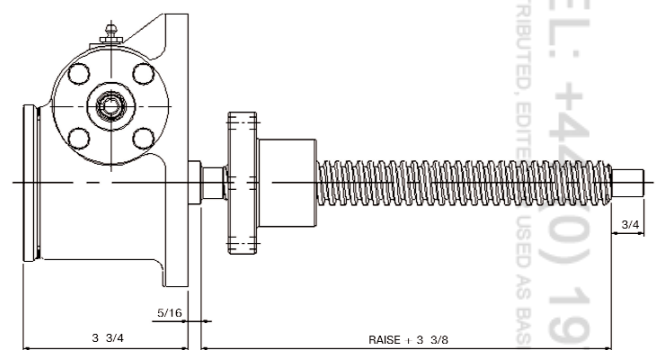
Upright: M-90003



Inverted: M-90002



Upright Rotating: UM-90004



Inverted Rotating: DM-90004

Note: Lifting screw is not keyed. Top should be secured to a lifting member to prevent rotation. When a Bellows Boot is required, see pages 143-144. Dimensions are subject to change without notice.