

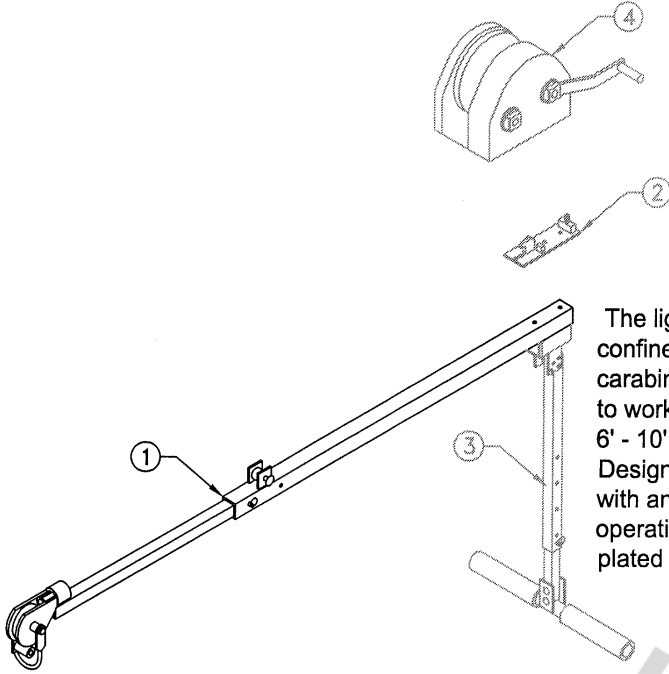


**6' - 10' Adjustable Pole Hoist**  
Model#: 8510476

**SPECIFICATIONS**  
PAGE 1 OF 2

**Model 8510476 includes the following**

Item	Part #	Description
1	8510476	6' -10' Adjustable Pole Hoist
Accessories shown in grey but NOT included		
2	8510222	Quick Mount Plate
3	8511235	T-Bar Leg
4	8511647	Digital 100 Winch



**DESCRIPTION**

The lightweight Pole Hoist is an extremely versatile piece of confined space entry/retrieval and rescue equipment. Simply carabiner the universal attachment ring to a suitable anchor point to work in any direction from any angle. Overall length adjusts 6' - 10' ft. for positioning attendant or working in close quarters. Designed for use with all UCL Safety Systems winches & available with an optional leg assembly to support winch and ease operation. Powder coated welded aluminum construction with zinc plated steel hardware.

**General specifications:**

Rated Capacity (working load)	450 lbs. (204 Kg.) @ 4:1 Design Factor
Max. Allowed Arresting Force (M.A.F.) rating for retractable devices ro shock absorbers	1000 lbs. (4.4 KN.)
Proof Load	2000 lbs. (8.8 KN.)
Proof Test	UCT-133
Weight	
Pole Hoist	14 lbs. (6.3 Kgs.)
T-Bar Leg Ass'y	7 lbs. (3 Kgs.)

**Materials & Construction:**

General Construction	Welded Aluminum / Steel
Weld Certification	CWB-47.2, CWB-47.1
Base Material	6061-T6, 5052 Aluminum
Sleeve	6061-T6 Aluminum
Hardware	GR.5/GR.8 Steel, Zinc Plated
Finish	Gray powder coat

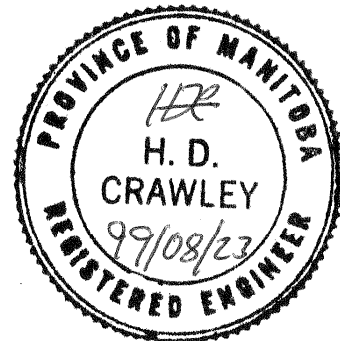
**Mounting Requirements:**

1. Anchor points for the Model #10476 Pole Hoist must be capable of withstanding a minimum load of 2000 lbs. (4.4 KN.). UCL Safety Systems can supply a variety of approved anchor methods.

**Application Restrictions**

1. Failure to comply with the mounting requirements, will cause the unit to become unstable and may cause serious injury or death.
2. Each installation **MUST BE** approved to local standards by a qualified engineer.

**CERTIFICATION**



**Capital Safety** USA: 800.328.6146 • Canada: 800.387.7484 • Asia: + 65 6558 7758 •  
Australia/New Zealand: 800 245 002 • Europe, Middle East, Africa: +33 (0) 497 10 00 10 •  
Northern Europe: +44 (0) 1928 571324  
[www.capitalsafety.com](http://www.capitalsafety.com) • [info@capitalsafety.com](mailto:info@capitalsafety.com)

**ISO 9001**  
REGISTERED

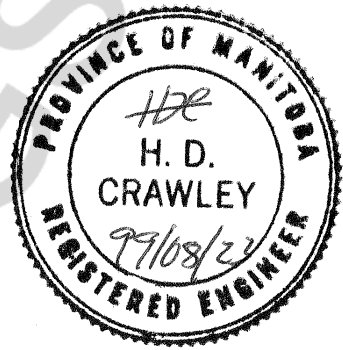
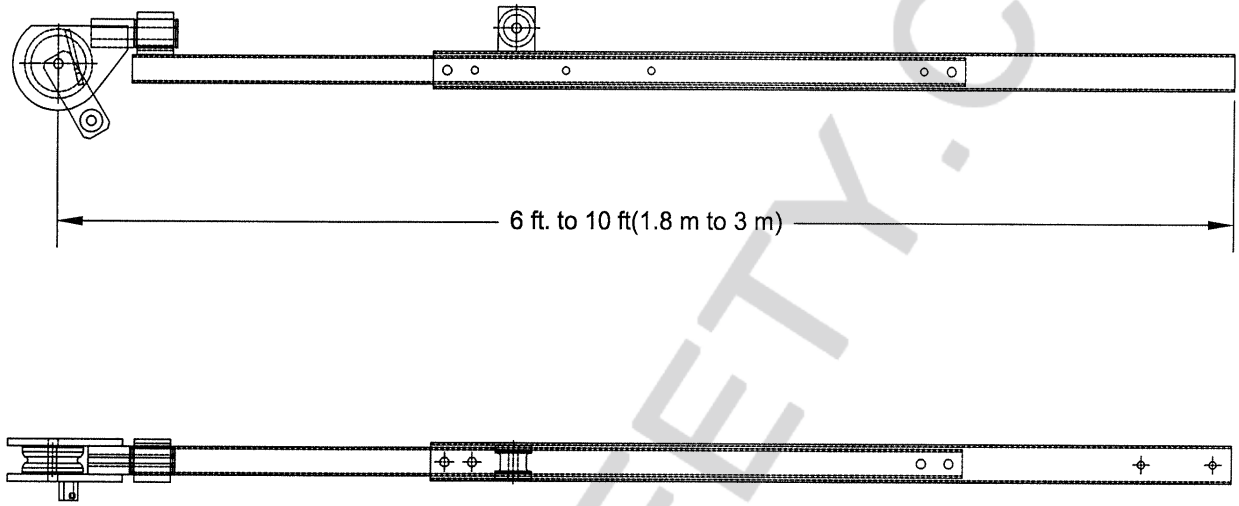
SELBY ENGINEERING AND LIFTING SAFETY LTD. TEL: +44 (0) 1977 684 600

SELBY ENGINEERING AND LIFTING SAFETY LTD. TEL: +44 (0) 1977 684 600



**6' - 10' Adjustable Pole Hoist**  
Model#: 8510476

**SPECIFICATIONS**  
PAGE 2 OF 2



**Capital Safety** USA: 800.328.6146 • Canada: 800.387.7484 • Asia: + 65 6558 7758 •  
Australia/New Zealand: 800 245 002 • Europe, Middle East, Africa: +33 (0) 497 10 00 10 •  
Northern Europe: +44 (0) 1928 571324  
[www.capitalsafety.com](http://www.capitalsafety.com) • [info@capitalsafety.com](mailto:info@capitalsafety.com)

**ISO 9001**  
REGISTERED